



STARHUB

TRANSFORMATION
FOR A NEW GENERATION

STARHUB NETWORK

ENABLING POSSIBILITIES

STARHUB INVESTOR DAY 2021



Forward-Looking Statements

The following presentation may contain forward-looking statements by StarHub Ltd (“StarHub”) relating to financial trends for future periods.

Some of the statements in this presentation which are not historical facts are statements of future expectations with respect to the financial conditions, results of operations and businesses, and related plans and objectives. These forward-looking statements are based on StarHub’s current views, intentions, plans, expectations, assumptions and beliefs about future events and are subject to risks, uncertainties and other factors, many of which are outside StarHub’s control. Important factors that could cause actual results to differ materially from the expectations expressed or implied in the forward-looking statements include known and unknown risks and uncertainties. Because actual results could differ materially from StarHub’s current views, intentions, plans, expectations, assumptions and beliefs about the future, such forward-looking statements are not and should not be construed as a representation, forecast or projection of future performance of StarHub. It should be noted that the actual performance of StarHub may vary significantly from such statements.

Our 5G Rollout

Consumer Proposition

Consumers can enjoy enhanced Mobile Broadband (eMBB) with new digital services such as AR for entertainment, education and healthcare, and the industry can deliver the promised massive Internet of Things with applications for a smarter society.

Superior Technology

New 3500MHz spectrum offers:

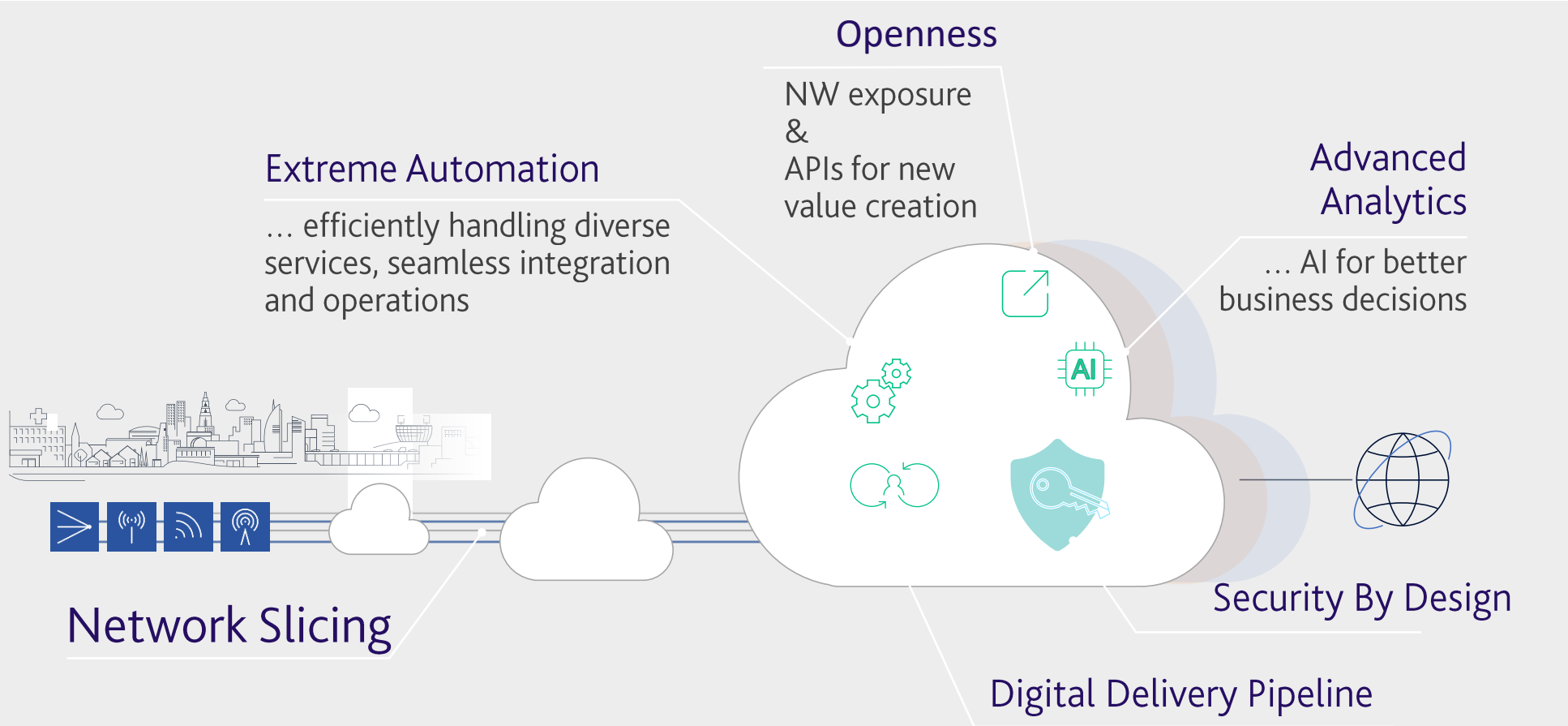
- 30% more Radio Capacity
- 30% more efficient with Massive MIMO
- 75% Nationwide (Outdoor) Coverage by end-2021

Enterprise Opportunities

5G enables Enterprise Use Cases like prioritised Mission Critical Communications, secure mobile campus networks for localised functions through network slicing capabilities. Also, by leveraging mobile edge computing services, Enterprise can host AI-based solutions such as facial recognition services and to deploy advanced IoT solutions.



5G CLOUD NATIVE: PROGRAMMABLE & ADAPTABLE NETWORK



Embracing radical new technologies



Simplified complexity to innovate business

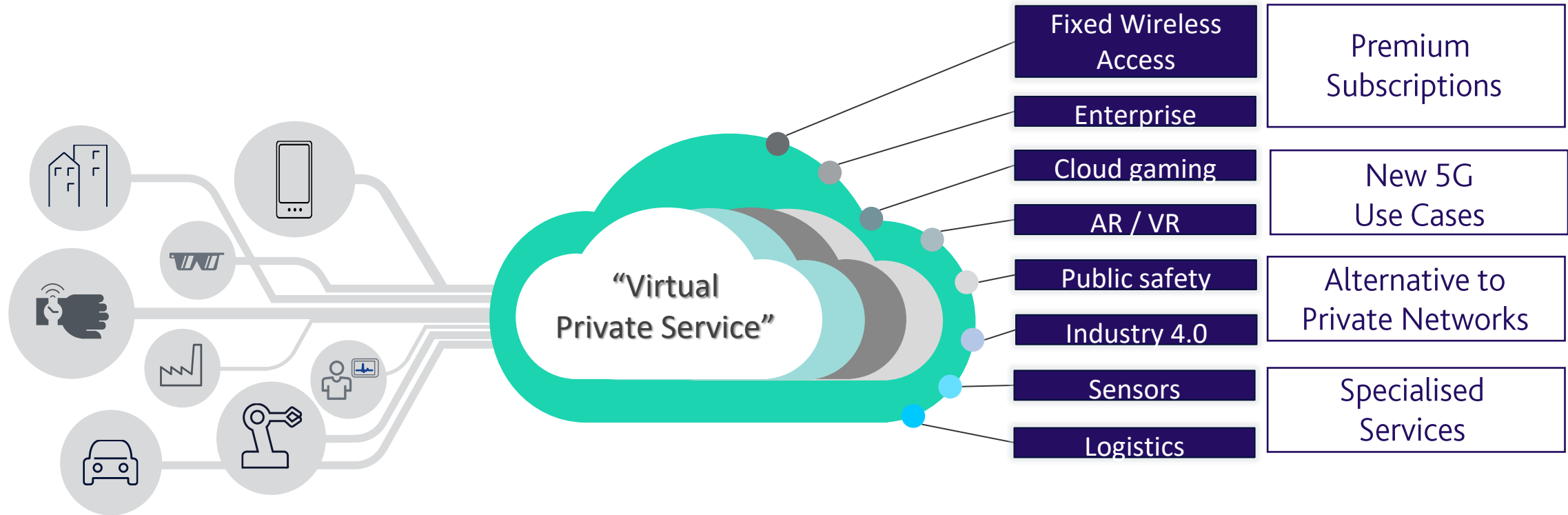
Build from opportunities.

Build a **flexible** network that tailored to customer needs.



SUPPORTING BUSINESS APPLICATIONS

One Network; Many Tailored Services



With Network Slicing tailored network capabilities can be enabled End-to-End and the life-cycle management of the slice can be automated.



TRANSITIONING INTO A LEADING DIGITAL SERVICE PROVIDER

Transcending Beyond Communications; Moving Up the Value Chain

Massive Machine Type Communications (mMTC)



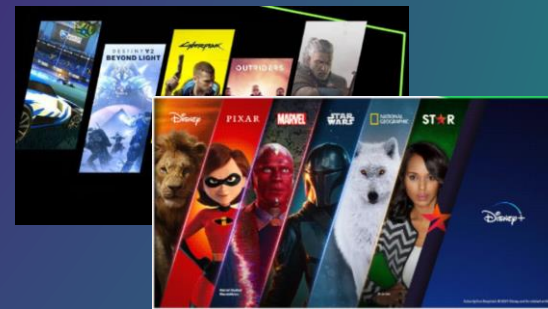
Enhanced Mobile Broadband (eMBB)



Ultra Reliable Low Latency Communications (URLLC)



5G IoT Platform



5G Entertainment



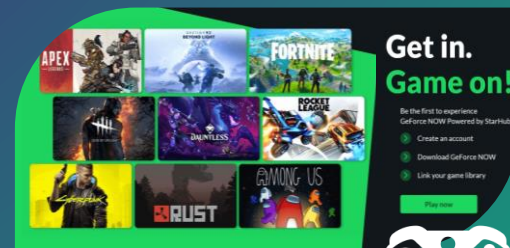
5G Mobile Hotspot



SmartPTT



NYP-StarHub APEX 5G



Gaming



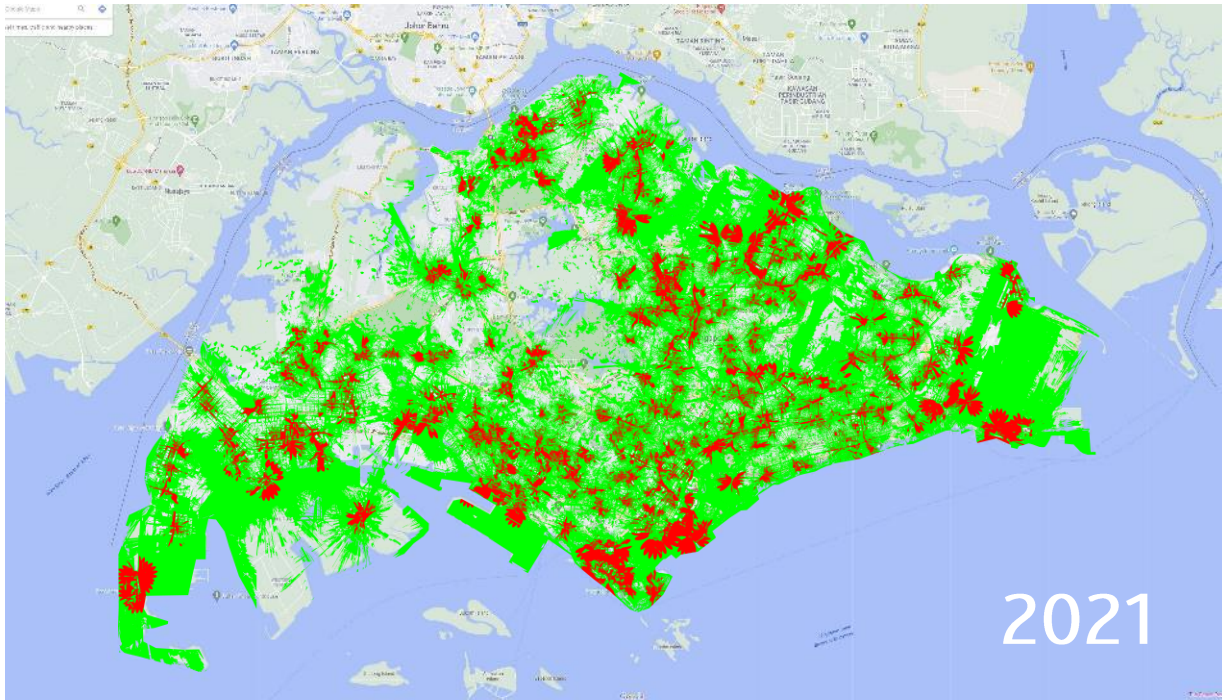
5G Digital Workplace



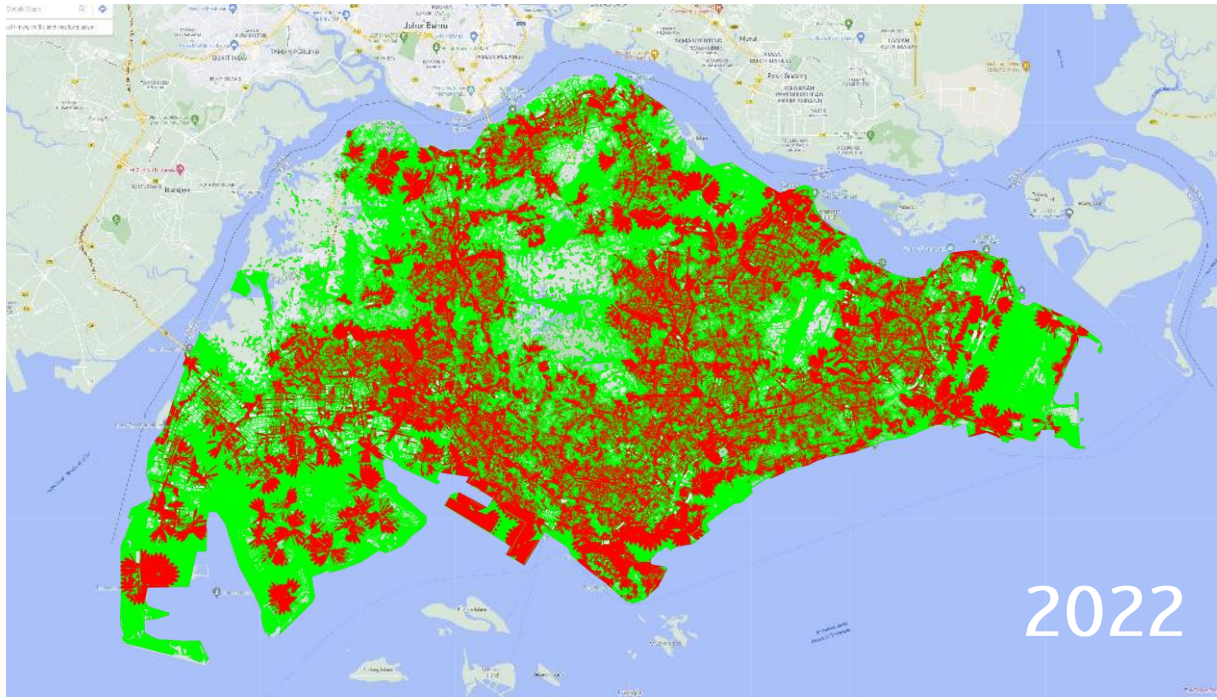
5G Digital (Enterprise) Showcase



5G SA COVERAGE – PROGRESSIVE PACE OF ROLLOUT



2021



2022

September 2021

50%



End-2021

75%

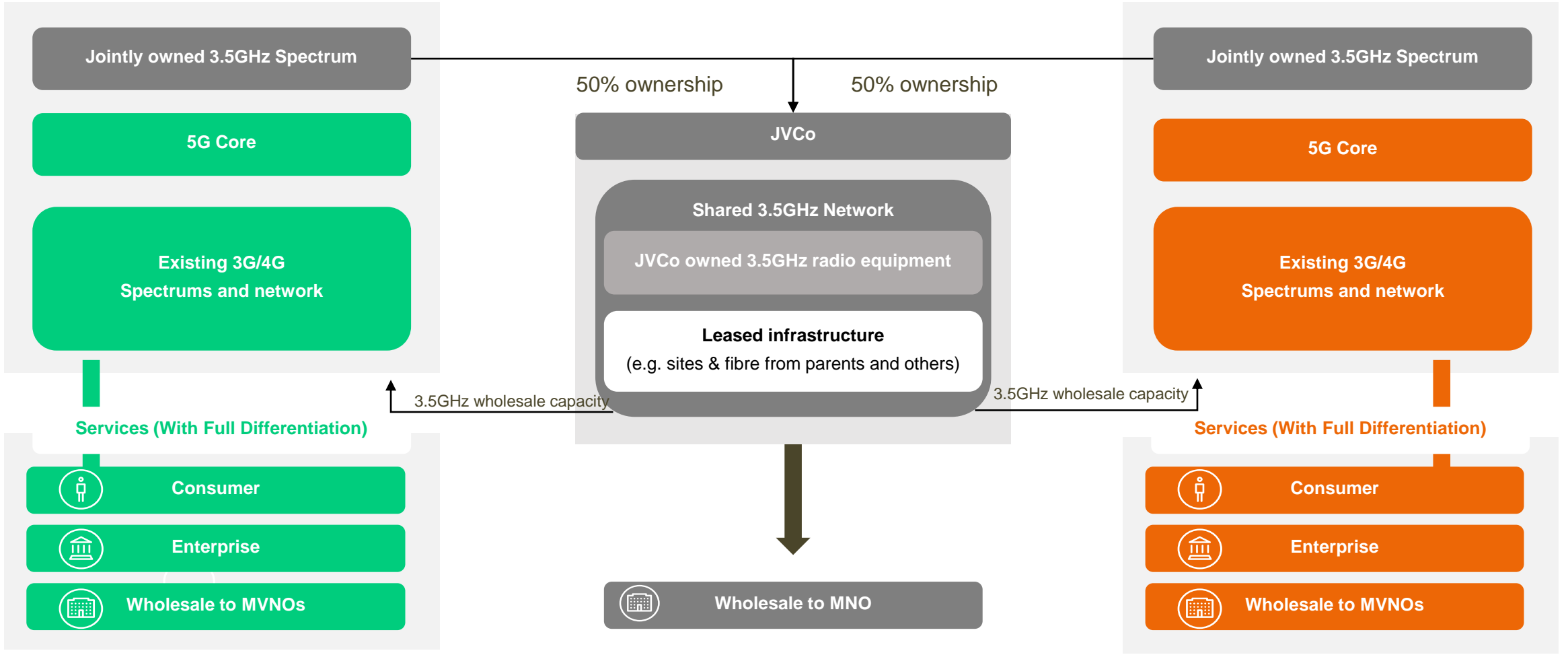


End-2022

Nationwide

EFFICIENT NETWORK SHARING MODEL

Harnessing Efficiencies While Retaining Full Service Differentiation





EFFICIENT NETWORK SHARING MODEL

Quantifiable Benefits

30%

More Capacity To Meet Bandwidth

100%

Avoided New Macro sites

50%

Savings on small cells deployment

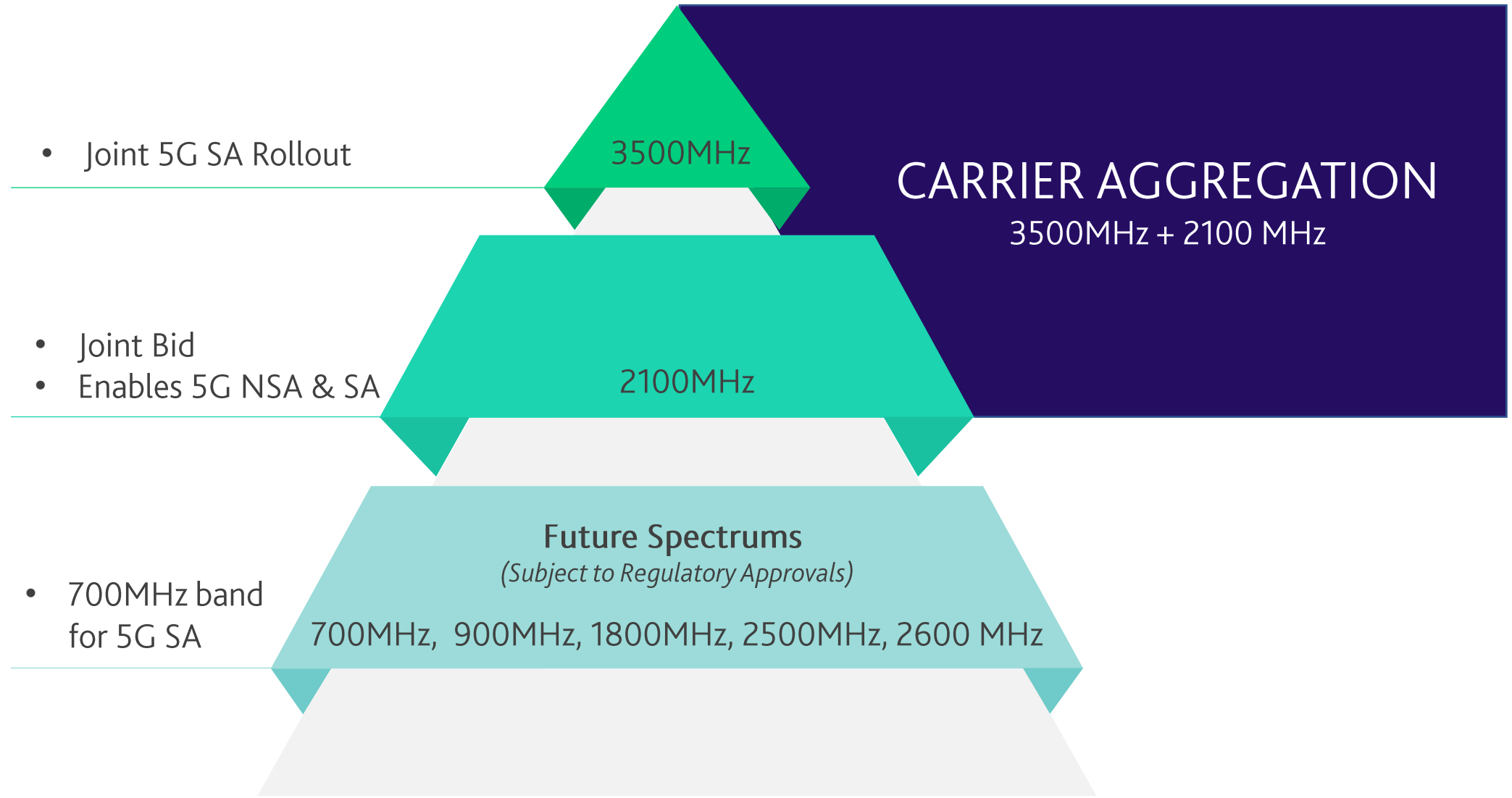
~\$150M

Savings due to network synergies from 2.1GHz and 3.5GHz





5G SPECTRUM STRATEGY

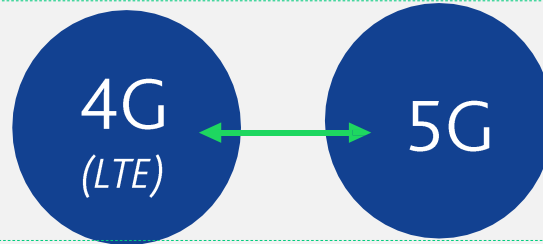




5G – DIFFERENTIATION, OPTIMISATION & INTEGRATION

Reaping Benefits of Past Investments

StarHub SRAN



SINGLE VENDOR
Seamless User Experience

*Low Band (DSS)
Mid Band (Sub-6Ghz)
High band (mmWave)*

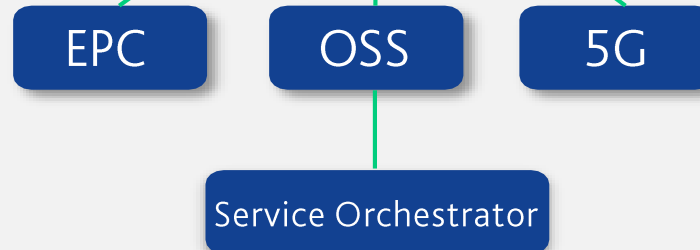


SRAN RADIO IS 5G COMPATIBLE
Extends the value of earlier 4G radio investments, and provides flexibility in deployment of Dynamic Spectrum Sharing (DSS) and/or static refarming of existing 4G spectrum to 5G



OFFERS AGILITY TO ENABLE 5G USE CASES

Cloud Native 5G SA Core with full interoperability with Public Cloud Providers (Azure, AWS)





EFFICIENT ROLLOUT STRATEGY TO SUPPORT STARHUB'S GROWTH



Rapid Deployment

Delivering 5G Nationwide Coverage by End-2024



Ultra Capacity

Maximise Network Capacities Over Spectrum Holdings



Unprecedented Efficiencies

Significant Cost Synergies & Benefits Through Singapore's First Joint Rollout Model



Cloud-Native 5G SA Core

Enabling Numerous 5G Business Applications



Network Slicing

Differentiated Service Levels Over One Advanced Network



Measured Investments

Well-Paced Rollout & Prudent Investments

STARHUB

Investor Relations:
Amelia LEE | IR@StarHub.com

@starhub

