



INVESTOR PRESENTATION

MAY 2020



COMPANY SNAPSHOT

Civmec is a leading end-to-end provider of integrated, multi-disciplinary manufacturing, construction and maintenance services.

~\$895 million

Contracted Order Book
(14/05/2020)

125,000m²

Workshop Facilities



3 Key Sectors

Metals & Minerals



Marine, Defence & Infrastructure

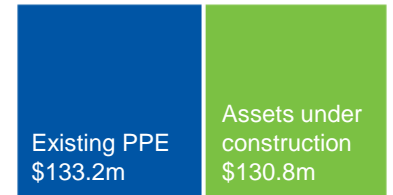


Oil & Gas



\$264 million

Book value of Property,
Plant & Equipment (PPE)



Service Offerings

Manufacturing

Construction

Maintenance

2,700

Direct employees
engaged during FY19

KEY OPERATING SECTORS



METALS & MINERALS

- Full turnkey services, including civil, concrete, fabrication, modularisation, platework and surface treatment, structural mechanical & piping and electrical & instrumentation.
- Significant pipeline of construction projects with major blue-chip clients.
- Diversified client base providing increased specialised maintenance and shutdown support opportunities.



MARINE, DEFENCE & INFRASTRUCTURE

- A world-class, strategic shipbuilding asset and capability.
- Federal Government's Naval Shipbuilding Plan is supporting a sustainable Australian naval shipbuilding and sustainment industry that will provide long-term opportunities.
- Henderson is a designated shipbuilding and sustainment precinct.



OIL & GAS

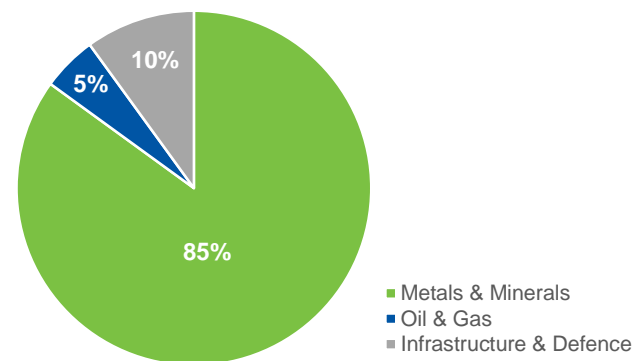
- Tailored solutions for upstream and downstream projects, including fabrication and modularisation of specialist subsea equipment to support onshore processing plant requirements.
- Current sector opportunity lies mainly in fabrication of subsea structures.
- Opportunities for ongoing asset maintenance and turnaround services.

FINANCIAL HIGHLIGHTS

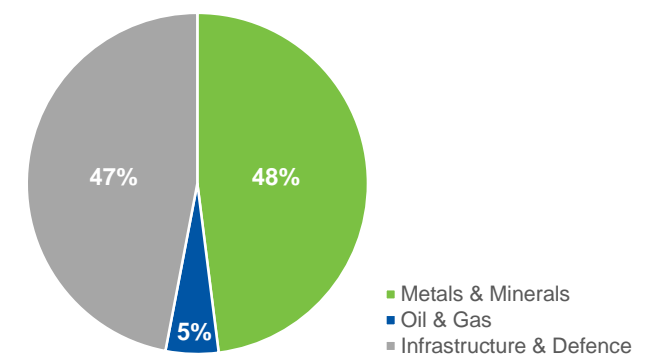
- Focus in FY20 : improving business profitability and delivering strong operating cash flows.
- Expectation to maintain consistent levels of revenue with major projects now in execution phase.
- Robust order book of ~\$895m distributed well over operating divisions.
- Overhead structure primed to sustain solid financial return.
- Strong cash generation from operations, reinvested into the business to strengthen the strategic asset base.

	Q3 FY20	9M FY20	9M FY19	9M FY20 vs 9M FY19	
Revenue	A\$95.5m	A\$261.6m	A\$415.1m	(A\$153.5m)	▼
EBITDA	A\$9.8m	A\$27.5m	A\$19.4m	A\$8.1m	▲
NPAT	A\$4.0m	A\$12.0m	A\$6.9m	A\$5.1m	▲

EBITDA %	10.2%	10.5%	4.7%	5.8ppt	▲
NPAT %	4.2%	4.6%	1.7%	2.9ppt	▲



9M FY20 Revenue by Sector



Current Order Book by Sector

COVID-19 UPDATE

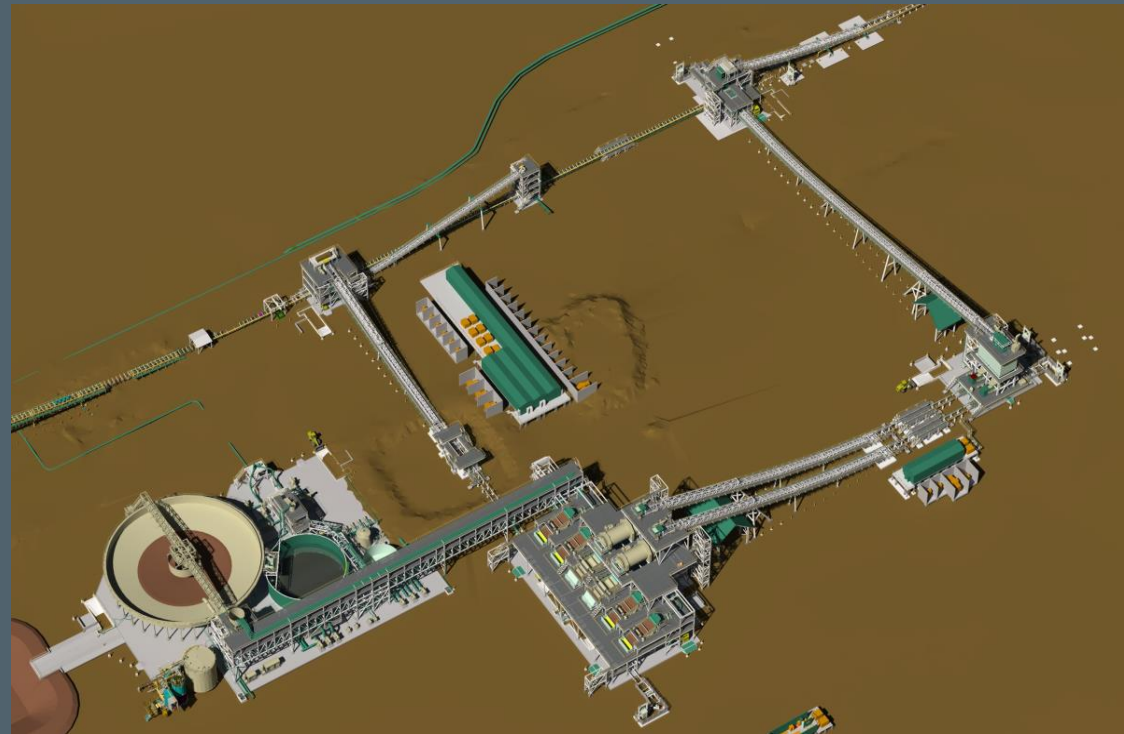
- COVID-19 has not caused significant impact on the Group's operations overall to date.
- Proactive measures implemented have ensured health and wellbeing, continued operations, and continued employment.
- Able to maintain steady project delivery while implementing COVID-19 restrictions. Cost impacts minor compared to the potential impact of restricted operations.
- In-house manufacturing capabilities have proved beneficial in ensuring many site supply chain requirements remain serviced.
- Insignificant effect on ability to win new work in Q3 FY2020.
- Some impact in timing of certain maintenance activities – these are being rescheduled, not cancelled.



NEWLY AWARDED CONTRACT

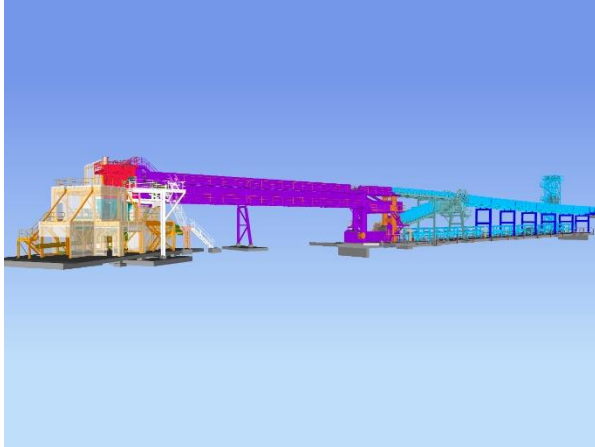
Rio Tinto's Robe Valley Sustaining (RVS) Iron Ore Project: Mesa A Wet Plant

- Pilbara region of Western Australia
- Supply, fabrication, modularisation, transportation to site, erection, modification, installation, and commissioning.
- Structural, mechanical, piping, electrical and instrumentation, and communication.
- Components include screening, surge bin and scrubbing facilities and associated conveyor systems, transfer towers, substation piping and cabling, including trenching for underground services.
- Duration: immediate start – mid 2021
- Employment opportunities for ~600 people over the project life cycle.
- Combined with recent maintenance orders for Rio Tinto the overall value is ~\$165M.



OTHER RECENT CONTRACT AWARDS

LAREGO OVERLAND CONVEYOR PACKAGE



CLIENT: Alcoa

LOCATION: Wagerup, WA

DURATION: Apr 20 – early 21

OVERVIEW: Vertical package incorporating civil, fabrication, structural, mechanical & piping (SMP), electrical & instrumentation (E&I) works, and no-load commissioning.

ROY HILL RUN-OF-MINE (ROM) PACKAGES



CLIENT: Roy Hill

LOCATION: Newman, WA

DURATION: Mar 20 to late 20

OVERVIEW: Packages include a civil package for the primary crushing station and conveyor tunnel works, and the supply, fabrication, surface treatment and delivery of ROM wall sections and structural steel for the transfer station.

WOODSIDE PLUTO LNG PROJECT



CLIENT: Worley for Woodside

LOCATION: Burrup, WA

DURATION: May 20 – late 20

OVERVIEW: Supply, fabricate, surface treat, assemble, test and deliver an interconnector and access module and piping spools and skids for Woodside's Pluto LNG project.

ONGOING SIGNIFICANT PROJECTS

ALBEMARLE KEMERTON LITHIUM PROJECT



CLIENT: Albemarle

LOCATION: Henderson and South-West, WA

DURATION: Jun 19 to mid 21

OVERVIEW: Extensive scope includes site civil works, fabrication and onsite installation of structural, mechanical & piping for the hydromet and final product, reagents and utilities for trains 1 and 2.

BHP SOUTH FLANK IRON ORE PROJECT



CLIENTS: BHP and Thyssenkrupp (separate contracts)

LOCATION: Henderson, WA

DURATION: Feb 19 to mid 20

OVERVIEW: Contract directly with BHP to supply and assemble 23 fully equipped "smart modules" and manufacture of stackers, bogies and equalisers for the project's rail-mounted machines for Thyssenkrupp.

FMG ELIWANA IRON ORE PROJECT



CLIENT: FMG

LOCATION: Henderson and Pilbara, WA

DURATION: Jan 20 to late 20

OVERVIEW: Full vertical delivery of the primary crushing and ore processing facility, including the facility's iron ore loading, primary, secondary and tertiary crushing, ore screening and associated conveyor systems.

OFFSHORE PATROL VESSELS



CLIENTS: Royal Australian Navy/ Luerssen Australia

LOCATION: Henderson

DURATION: Ongoing to 2029

OVERVIEW: Supply and processing of steel for 12 OPVs. Cutting steel plates for the first two OPVs for assembly in South Australia, with Civec undertaking fabrication and consolidation of the following 10 vessels at Henderson.

MAINTENANCE & SHUTDOWN CONTRACTS



CLIENTS: Roy Hill, FMG, Alcoa, Rio Tinto, Chevron, etc.

LOCATION: Across Australia

DURATION: Ongoing

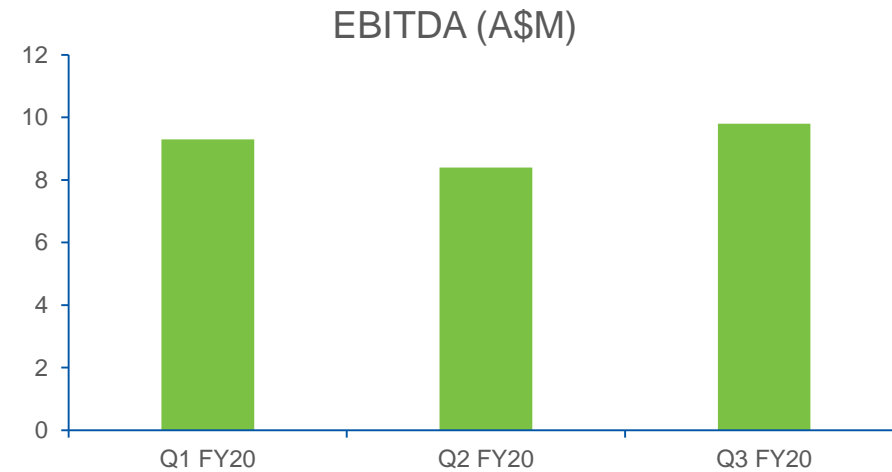
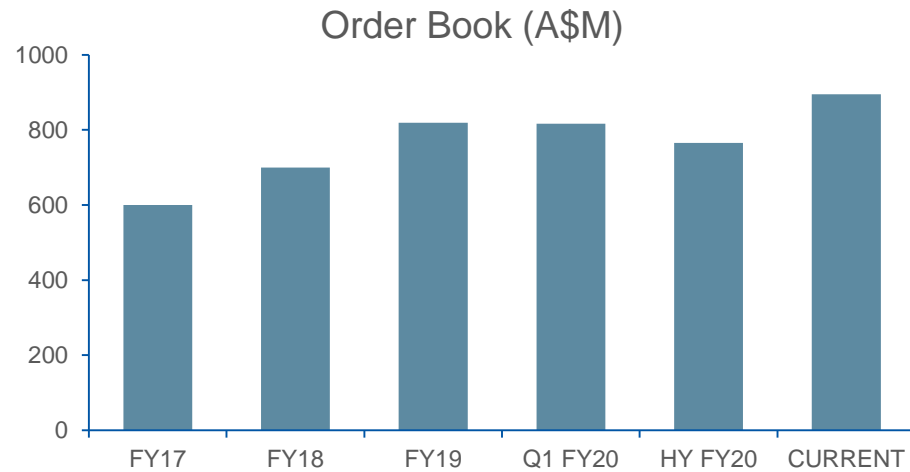
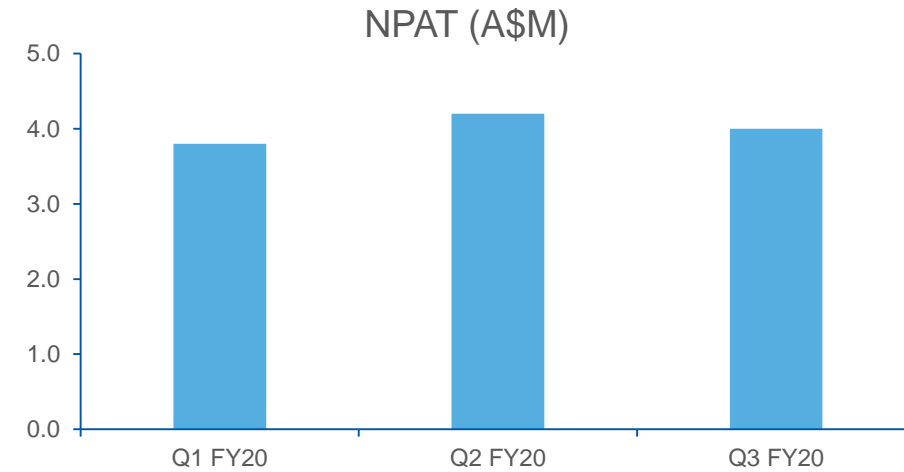
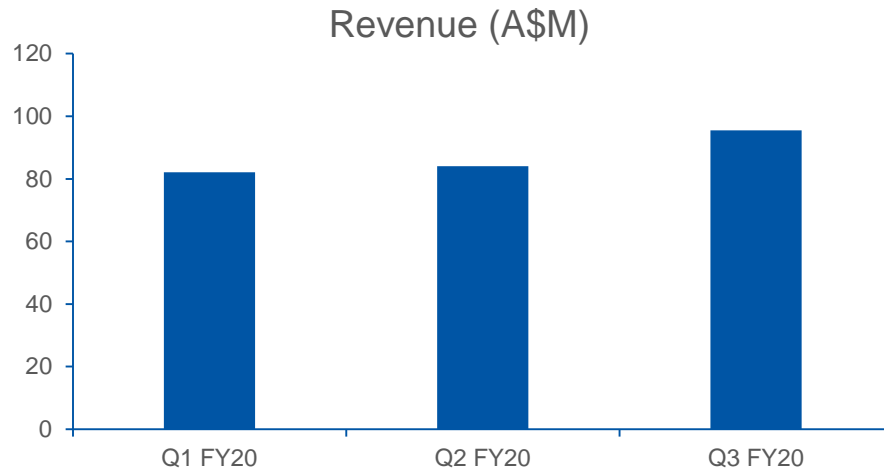
OVERVIEW: Various scopes include refractory, mechanical and surface treatment, leveraging our specialist capability. Through BRC, have partnered with Chevron for the execution of turnaround services until the end of 2020.



FINANCIAL OVERVIEW



HISTORICAL FINANCIAL PERFORMANCE



NOTE : As of 14 May 2020 the order book stands at ~\$895M

CONSIDERABLE INVESTMENT IN STRATEGIC ASSETS

Continued investment into strategic asset base



Considerable investment into Property, Plant and Equipment (PPE), provides Civmec with a substantial strategic asset base.

Summary Balance Sheet	Mar 2020
Current Assets	A\$204.3m
Non-Current Assets	A\$264.4m
Total Assets	A\$468.7m
Total Liabilities	A\$289.7m
Net Assets	A\$179.0m

Return to normal business operational capex requirement in FY21.

RECENT PERFORMANCE AND ACTIVITIES

FINANCIAL

- Continued stability in net profit, with return for Q3 at A\$4.0m, consistent with previous recent quarters.
- Revenue for Q3 strong at A\$95.5m, consistent with previous recent quarters.
- YTD revenue of A\$261.6m.
- Solid asset base with book value of property, plant and equipment at \$264m.
- Robust order book of ~\$895m well distributed across operational divisions.
- Targeted capex expenditure on efficiency enhancing heavy engineering and shipbuilding equipment.

OPERATIONAL

- Major projects continue to advance:
 - full vertical delivery of the primary crushing and ore processing facility for FMG's new Eliwana mine
 - delivery of Albemarle lithium hydroxide plant
- Consistent awards of new work packages from long-term clients, including packages for Alcoa, Roy Hill and Worley for Woodside.
- Most recent award of significant contract for Rio Tinto for Robe Valley wet process plant.
- Commencement of construction for OPV3 at Henderson.
- Commencement of utilisation of our state-of-the-art megastructure, our new assembly and sustainment facility.

PEOPLE AND SYSTEMS

- Future-proofing workforce with extensive graduate and apprentice programs.
- Increased collaboration with universities, TAFE and schools for technology advances and development of future workforce.
- Increased investment with internal learning and development programs.
- Continuous development enhancements to internal business management system, Civtrac.
- Focus on technological advancements that enhance operational efficiencies; not technology for technology's sake
- Staged adoption of new technology and systems.

FUTURE OUTLOOK

FOCUS

- Maximise utilisation of assets, plant and equipment - return on capital investment.
- Ensure highest standards of quality and efficiency within shipbuilding capability.
- Exceptional delivery across current resource projects.
- Continue momentum with revenue and profit returns.

OPPORTUNITY

- Continuous strong pipeline of opportunity across manufacturing, construction and maintenance.
- Capitalise on opportunities that utilise our multidisciplinary capabilities





THANK YOU

