

ALLIANCE MINERAL ASSETS LIMITED

(Company Registration Number: ACN 147 393 735)

(Incorporated in Australia on 6 December 2010)

INDEPENDENT QUALIFIED PERSON'S REPORT ON THE BALD HILL TANTALUM PROJECT

Unless otherwise defined, all capitalised terms herein shall have the same meanings as defined in the Company's announcement dated 2 September 2014 ("**2 September Announcement**").

The Board of Directors (the "**Board**") of Alliance Mineral Assets Limited (the "**Company**") refers to the 2 September Announcement in relation to the Singapore Exchange Securities Trading Limited's ("**SGX-ST**") no objection to the Company's application for the Waiver for, *inter alia*, to use 31 March as the effective date of its annual qualified person's report instead of 30 June as required under Rule 1204(23)(a) of the Listing Manual Section B: Rules of Catalist (the "**Catalist Rules**") of the SGX-ST.

Further to the 2 September Announcement, the Board is pleased to present the attached independent qualified person's report issued by AL Maynard & Associates Pty Ltd dated 12 August 2016 (the "**Report**") prepared in compliance with the requirements of Practice Note 4C - Disclosure Requirements for Mineral, Oil and Gas Companies of the Catalist Rules of the SGX-ST.

As disclosed in the attached Report, the summary of the reserves and resources for the Bald Hill deposit as at 31 March 2016 as per Appendix 7D of the Catalist Rules is as follows:

Category	Mineral Type	Gross Attributable to licence				Net Attributable to Issuer			Remarks
		2015		2016		Tonnes (millions)	Grade Ta ₂ O ₅ (ppm)	Change from previous update (contained Ta ₂ O ₅)	
		Tonnes (millions)	Grade Ta ₂ O ₅ (ppm)	Tonnes (millions)	Grade Ta ₂ O ₅ (ppm)				
Reserves									
Proved	Tantalum	0	0	0.00	0	0.00	0	0	
Probable	Tantalum	0.02	187	1.69	303	1.69	303	13654%	Central and Boreline
Total		0.02	187	1.69	303	1.69	303	13654%	
Resources									
Measured	Tantalum	0	0	0.00	0	0.00	0	0	
Indicated	Tantalum	2.57	340	0.65	306	0.65	306	-77%	
Inferred	Tantalum	0.1	367	1.1	339	1.1	339	1005%	
Total		2.67	341	1.74	326	1.74	326	62%	

Resource and Reserve Summary for Bald Hill outside mined pits (whole of pegmatite Varley, 2015 for Central and Boreline, and AMC Consultants 2014 using 100ppm Ta₂O₅ lower cut-off for Creekside) at 31 March 2016. Note: See Mineral Resource and Ore Reserve sections of the report for details. Reserves are exclusive of Resources. *2015 Indicated resources from Central and Boreline only converted to reserves.

ALLIANCE MINERAL ASSETS LIMITED

Page 2

BY ORDER OF THE BOARD

Suen Sze Man
Executive Director
12 August 2016

*This announcement has been prepared by Alliance Mineral Assets Limited (the “**Company**”) and its contents have been reviewed by PrimePartners Corporate Finance Pte. Ltd. (the “**Sponsor**”), for compliance with the Singapore Exchange Securities Trading Limited (the “**SGX-ST**”) Listing Manual Section B: Rules of Catalyst. The Sponsor has not verified the contents of this announcement. The Sponsor has not drawn on any specific technical expertise in its review of this announcement. This announcement has not been examined or approved by the SGX-ST. The Sponsor and the SGX-ST assume no responsibility for the contents of this announcement, including the accuracy, completeness or correctness of any of the information, statements or opinions made or reports contained in this announcement.*

The contact person for the Sponsor is Ms Gillian Goh, Director, Head of Continuing Sponsorship, at 16 Collyer Quay, #10-00 Income at Raffles, Singapore 049318, telephone (65) 6229 8088.

AL MAYNARD & ASSOCIATES Pty Ltd

Consulting Geologists

www.geological.com.au

ABN 75 120 492 435

9/280 Hay Street,

Tel: (+618) 9388 1000

Mob: 04 0304 9449

SUBIACO, WA, 6008

Fax: (+618) 9388 1768

al@geological.com.au

Australia

Australian & International Exploration & Evaluation of Mineral Properties

INDEPENDENT QUALIFIED PERSON'S REPORT

on the

BALD HILL TANTALUM PROJECT

WESTERN AUSTRALIA

PREPARED FOR

Alliance Mineral Assets Limited

Author: Allen J Maynard BAppSc (Geol), MAIG, MAusIMM

Company: Al Maynard & Associates Pty Ltd

Date: 12th August, 2016

CONTENTS

Executive Summary.....	1
1.0 Introduction.....	1
1.1 Purpose of this report.....	1
1.2 Use of report	1
1.3 Reporting standard	1
1.4 Basis, Scope and Limitations of this report.....	2
1.5 Site Visits.....	2
1.6 Statement of Independence.....	2
Tenure.....	3
Native Title.....	4
Royalty.....	5
Native Title	6
Accessibility, Climate, Local Resources, Infrastructure and Physiography	6
History 8	
Geological Setting and Mineralisation	9
Regional Geology	9
Mount Belches Formation (Abe-mh, Abe-mhe, Abe-mhz, Abe-mls).....	11
Pegmatites (gp).....	11
Economic Minerals at Bald Hill	12
Tantalum	12
Lithium.....	13
Tin.....	14
Local Geology.....	14
Drilling 17	
Collar Surveys and Topographic Control (resource drilling only)	20
Sample Preparation, Analyses and Security	21

Internal Laboratory Standards	22
Drill Sample Duplicates	23
Internal Laboratory Repeats	24
Data Verification	25
Bulk Density	26
Mineral Processing.....	26
Processing Plant Commissioning	26
Mineral Resources and Ore Reserves	28
Exploration Potential	32
Ore Reserves.....	33
<i>Design and Evaluation Parameters</i>	<i>33</i>
<i>Natural Surface Topography</i>	<i>33</i>
<i>Ore Resource Model</i>	<i>34</i>
<i>\$US/\$Au Exchange Rate</i>	<i>34</i>
<i>Ta2O5 Price</i>	<i>34</i>
<i>Royalties</i>	<i>34</i>
<i>Selling Cost</i>	<i>34</i>
<i>Cost Information.....</i>	<i>34</i>
<i>Amortisation, Depreciation, Capital and Start-Up Costs.....</i>	<i>34</i>
<i>Mining Recovery and Dilution</i>	<i>35</i>
<i>Metallurgical Recovery.....</i>	<i>35</i>
<i>Mine Design Parameters</i>	<i>35</i>
<i>Processed Ore/Waste Cut-off Grade</i>	<i>37</i>
Mining Methods.....	39
Recovery Methods	39
Environmental Studies, Permitting and Social or Community Impact	41
Mining approvals	42

Safety management systems.....	42
Environmental management systems	42
Tailings disposal.....	42
Storage of explosives.....	42
Radiation registration for concentrate transport and storage.....	42
Statutory appointments	42
Native Title agreements	43
Capital and Operating Costs.....	43
Economic Analysis.....	43
Other Relevant Data and Information	45
Interpretation and Conclusions	45
Risks	46
Overall Risks	46
Project Risks	47
Resource	48
Mining Risk	48
Commodity Price and Demand, and Exchange Rates.....	48
General Economic Factors and Investment Risks.....	48
Currency Exchange Rate Fluctuations	49
Taxation.....	49
Unforeseeable Risks	49
Recommendations	49
Competent Person statement	51
AM&A Competent Person for Mineral Resources: Mr Allen J. Maynard	51
References	52
World Wide Web	53
JORC Code, 2012 Edition – Table 1, Bald Hill Boreline Resource. – (After Varley)	54

Section 1 Sampling Techniques and Data.....	54
Section 2 Reporting of Exploration Results	57
Section 3 Estimation and Reporting of Mineral Resources	59
JORC Code, 2012 Edition – Table 1, Central Resources. – (After Varley).....	63
Section 1 Sampling Techniques and Data.....	63
Section 2 Reporting of Exploration Results	65
Section 3 Estimation and Reporting of Mineral Resources	67
Section 4 Estimation and Reporting of Ore Reserves.....	71

List of Figures

Figure 1: Alliance Mineral Assets Limited tenements.....	4
Figure 2: Location map of the Bald Hill tantalite project.....	7
Figure 3: Regional Geology (after Hall and Jones, 2008).	10
Figure 4: Tantalum electrolytic capacitor (after Wikipedia).	13
Figure 5: Pegmatite samples with tantalite and spodumene from Bald Hill.	14
Figure 6: Photos showing pegmatites and their structural orientations.	15
Figure 7: Local Geology.	16
Figure 8: Lithium exploration targets at Bald Hill on the Company's tenements. (within dashed black lines).....	17
Figure 9: Map showing drill collar locations in vicinity of main deposits.	20
Figure 10: Laboratory Standards results for 2014 RC drilling only.	23
Figure 11: Correlation graph of original Vs field duplicate sample Ta ₂ O ₅ analyses for 2014 drilling only.....	24
Figure 12: Laboratory repeat assay results.	25
Figure 13: General relationship between Exploration Results, Mineral Resources and Ore Reserves.	30
Figure 14 Boreline and Boreline Extended open pit designs (McCrae 2016)	37
Figure 15 Central Zone open pit designs (McCrae 2016)	38
Figure 16: Photos of processing plant at Bald Hill.	40
Figure 17: Bald Hill primary circuit process flow-sheet.	41
Figure 18: Bald Hill secondary circuit process flow-sheet.	41
Figure 19: Tantalite market price since January 7 2011 to 31 March 2016 (after InfoMine).	44
Figure 20: Lithium Carbonate market price since January 1, 2015 to March 1, 2016 (after Thomson Reuters).	45

List of Tables

Table 1: Grades of Tantalite concentrate produced for testing by potential customers of Mitsubishi RtMJ.	2
Table 2: Reconciliation of the Boreline Oxide ore processed during Bald Hill processing plant commissioning.	3
Table 3: Resource and Reserve Summary for Bald Hill outside mined pits (whole of pegmatite Varley, 2015 for Central and Boreline, and AMC Consultants 2014 using 100ppm Ta ₂ O ₅ lower cut-off for Creekside) at 31 March 2016. Note: See Mineral Resource and Ore Reserve sections of this report for details, Reserves are exclusive of Resources. *2015 Indicated resources from Central and Boreline only converted to reserves.	3
Table 4: Summary of Alliance Minerals Assets Limited tenements. All licences are for minerals exploration and where applicable mining. ** Renewal application submitted	4
Table 5: Native Title status. <i>RSHA = Regional Standard Heritage Agreement</i>	5
Table 6: Climate data for Kalgoorlie (100 km to northwest) (after Wikipedia).	7
Table 7: Drilling and assay statistics. (Inside AMAL tenements only)	17
Table 8: Summary of drillholes after drilling database reconstructed by AM&A in 2016.	19
Table 9: Method codes and elements analysed using XRF102 and detection limits (ppm).	22
Table 10: Certified Results for Laboratory Standards.	22
Table 11: GTS Report Bulk Density Results.	26
Table 12: Reconciliation of the Boreline Oxide ore processed during Bald Hill processing plant commissioning.	27
Table 13: Resource Summary for Bald Hill outside mined pits (AMC Consultants 2014 using 100ppm Ta ₂ O ₅ lower cut-off, Varley, 2015) at 31 March 2016. Note: See Ore Reserve section of this report for details on Reserves, Reserves are exclusive of Resources. *2015 Indicated resources from Central and Boreline converted to reserves.	32
Table 14: Reserve summary for Bald Hill (McCrae, 2016) at 31 March 2016. Note that Reserves are exclusive of Resources.	39
Table 15: Risk Assessment Guidelines.	47
Table 16: Summary of Main Project Risks.....	49

Executive Summary

The Bald Hill Tantalum Project ("Property") is located within the state of Western Australia (WA), approximately 580 km east of the state capital, Perth. It is located within the Eastern Goldfields Province of the Archaean Yilgarn Block. The Bald Hill Project area is located about 60km south east of Kambalda and 50 km east of Widgiemooltha in the Coolgardie Mineral Field of Western Australia (Fig 1).

Alliance Mineral Assets Limited ("AMAL" or the Company") has a portfolio of mineral tenements, comprising mining leases, exploration licences, prospecting licences, miscellaneous licences and a general-purpose lease, and a retention lease.

AMAL's primary interest in the area is tantalum mineralisation hosted in a series of pegmatitic sheets and veins intruded into an Achaean metasediment sequence. These sheets and veins are developed along a roughly north-south trend, and vary in geometry, extent, and dip, both to the west and east. The pegmatites contain tantalite, columbite, spodumene, cassiterite, and others as accessory minerals. A tantalite resource has been identified at the Bald Hill project (AMC, 2014 and Varley, 2015) and the development of this resource is the primary objective of AMAL. The exploration potential for additional tantalum resources on the Bald Hill Extended and Madoonia projects is considered very high.

Modern exploration for tantalum commenced in the area in the early 1980s and continued in campaigns by several companies until 2000, when a feasibility study established the technical and economic viability for an open-pit mine with an on-site process plant to produce a tantalum-bearing concentrate. Mining and processing operations were profitably undertaken by Haddington International Resources Limited ("Haddington") from 2001 to 2005, when operations ceased due to Sons of Gwalia (ex ASX: "SGW") going into Administration. SGW had a sole exclusive off-take agreement with Haddington which thereby forced the cessation of operations. At the time of mine closure, Haddington reported that there was approximately 2.0 million tonnes (Mt) of Indicated mineral resources remaining in, and adjacent to, several open pits. The mine site has been on care and maintenance since 2005, but Haddington continued to undertake some exploration over the property until 2009.

In 2009, Living Waters Mining (Australia) Pty Ltd ("Living Waters") acquired the project from Haddington and also acquired a number of additional tenements north of the main project area. The Property was transferred to HRM Resources Australia Limited ("HRM") in 2011. On 13 March 2014, HRM changed its name to Alliance Mineral Assets Limited.

Since 2009, Living Waters, and subsequently, HRM/AMAL have undertaken work aimed at re-commissioning the process plant (+90% completed) and site preparations for mining the remaining mineral resources. Some limited exploration north and east of the main mining area has also been completed.

Al Maynard and Associates ("AM&A") undertook an initial site visit to the Bald Hill Tantalite Project for AMAL on the 18 February, 2014 and conducted a follow up visits on 31 March 2015, 14-18

December 2015 and 18-22 April 2016. Another previous field trip to the site for another unrelated client was conducted in 2002.

The current JORC Code 2012 Mineral Resource estimate inventory at 31 March 2016 stands at:- 1.7 million tonnes at 326 ppm Ta₂O₅ of which 0.65 million tonnes at 306 parts per million (ppm) Ta₂O₅ is Indicated and approximately 1.1 million tonnes at 339 ppm Ta₂O₅ is Inferred. In addition to this resource are reserves at Boreline and Central of 1.69 million tonnes at an average grade of 303 ppm Ta₂O₅. Once a Native Title agreement has been successfully negotiated for Fenceline and Creekside and actual operating costs and mining and process plant recoveries are obtained from mining these reserves, a Reserve estimate will be made for the remaining Indicated resources.

The Bald Hill gravity primary and secondary processing plants were successfully commissioned during late 2015/early 2016 using ore mined from the Boreline Oxide pit.

The tantalite concentrate produced during the plant commissioning was very high grade with low levels of contamination with deleterious minerals and therefore exceeding the minimum specifications for a high value product that commands a premium price. As well as producing a tantalite concentrate, spodumene, high grade garnet and ilmenite (titanium) concentrates were also produced at sufficient grade to be sold as by-products.

Description	Ta ₂ O ₅ %	Sn %	U%	Nb ₂ O ₅ %	Fe ₂ O ₃ %	Li ₂ O%
Final Tantalite concentrate	25.894	1.622	.057	17.991	15.55	0.193

Table 1: Grades of Tantalite concentrate produced for testing by potential customers of Mitsubishi RtMJ.

Processing Path	Ore	Ta ₂ O ₅ Assay	Ta ₂ O ₅ metal	Recovery
	tonnes	ppm	kg	%
ROM	27,000	159.93	4318.3	
Scats unprocessed	5,741	105.64	606.48	
Ore actually processed	21,259	174.6	3,711.74	
Primary plant recovery (Before VSI installed)				29%
Primary concentrate (Before VSI installed)	75.15	9,516.03	715.16	
Primary plant recovery (After VSI installed)				52%
Primary concentrate (After VSI)	98.29	6,529.66	641.79	
Secondary Plant recovery				95%
Secondary concentrate	19.9	64,506.2	1,285.6	
Beneficiation Recovery				94%
Beneficiation concentrate	5.8	207,430.5	1,203.2	

Overall Recovery (Before VSI installed)				26%
Overall Recovery (After VSI installed)				46%

Table 2: Reconciliation of the Boreline Oxide ore processed during Bald Hill processing plant commissioning.

ROM = Run of mine stockpile for ore at plant prior to processing

VSI = Vertical Shaft Impact crusher in plant

Recovery = Tantalite recovered (%) at processing stage indicated.

AM&A concludes that there are sufficient resources at a sufficient grade to warrant the Company's planned full scale mining and production of high quality tantalite concentrates.

Full mine and plant production of tantalite will commence after there is an increase in the spot price of Tantalum and a sales contract locked in at an acceptable price to provide sufficient margins to operate profitably. During the Commissioning phase to produce a tantalite concentrate, various by-products were produced from the same pegmatite ore. The most significant by-product was a 6.7% Li₂O Spodumene concentrate.

Radiation registration, statutory appointments, mine design, safety management and environmental management systems applications have all been approved by the relevant WA state departments. The only outstanding approvals are the in-pit tailings disposal facilities and stage two mining approval.

Category	Mineral Type	Gross Attributable to licence				Net Attributable to Issuer			Remarks
		2015 Tonnes (millions)	Grade Ta ₂ O ₅ (ppm)	2016 Tonnes (millions)	Grade Ta ₂ O ₅ (ppm)	Tonnes (millions)	Grade Ta ₂ O ₅ (ppm)	Change from previous update (contained Ta ₂ O ₅)	
Reserves									
Proved	Tantalum	0	0	0.00	0	0.00	0	0	
Probable	Tantalum	0.02	187	1.69	303	1.69	303	13654%	Central and Boreline
Total		0.02	187	1.69	303	1.69	303	13654%	
Resources*									
Measured	Tantalum	0	0	0.00	0	0.00	0	0	
Indicated	Tantalum	2.57	340	0.65	306	0.65	306	-77%	
Inferred	Tantalum	0.1	367	1.1	339	1.1	339	1005%	
Total		2.67	341	1.74	326	1.74	326	62%	

Table 3: Resource and Reserve Summary for Bald Hill outside mined pits (whole of pegmatite Varley, 2015 for Central and Boreline, and AMC Consultants 2014 using 100ppm Ta₂O₅ lower cut-off for Creekside) at 31 March 2016. Note: See

Mineral Resource and Ore Reserve sections of this report for details, Reserves are exclusive of Resources. *2015 Indicated resources from Central and Boreline only converted to reserves.

AM&A also concludes that there is excellent potential to increase the tantalum Mineral Resource, and consequently the Ore Reserves, because there are several prospects that have been previously drill tested and shown to host significant tantalum mineralisation. Additionally, there are a number of prospects where surface sampling and geological mapping has identified tantalum mineralisation that requires further exploration.

AM&A notes that the pegmatites at Bald Hill also host significant amounts of spodumene, a lithium ore mineral. Haddington used lithium assays in the country rocks and soils as an indicator element to locate pegmatites but never considered the economic potential of lithium as the prices for lithium concentrates at the time were considerably lower than at present. AMAL have commenced metallurgical tests on samples collected of the Haddington mining era tailings to determine if the lithium in these tailings can be economically recovered. AMAL has also commenced evaluating the historic exploration data to identify lithium targets for follow up exploration.

As announced by the Company on 3rd June 2016, AMAL signed a binding terms sheet with Lithco No. 2 Pty Ltd relating to granting of exploration and prospecting rights for minerals on the Company's tenements. Pending shareholders' approval, the Company has agreed to grant Lithco sole and exclusive exploration and prospecting rights over all minerals within an area enclosed by the external boundaries of the Tenements as at the date of the Binding Terms Sheet and an agreed 10km radius of the Tenements, and Lithco will undertake exploration and feasibility for lithium and other minerals in the Tenement Area. The parties have also agreed that any other tenements that are acquired or granted in the future which fall within the Tenement Area shall form part of this arrangement. Lithco undertakes to spend, by 31 December 2017 (or such later date as mutually agreed by the Parties), a minimum of AUD7,500,000 on exploration, evaluation, and feasibility (including administrative and other overhead costs in relation thereto); and spend, AUD12,500,000 in capital expenditure required for upgrading and converting the Plant for processing ore derived from the Tenement Area, infrastructure costs, pre-stripping activities and other expenditures including operating costs.

Upon completion of the AUD7,500,000 expenditure commitment, Lithco shall be entitled to 50% of all rights to lithium minerals from the Tenements and the Company and Lithco shall operate under the Lithium Rights Joint Venture arrangement ("Lithium Rights JV") in relation thereto. Upon completion of the AUD12,500,000 expenditure commitment, Lithco will be entitled to a 50% legal and beneficial interest in the Project and the Company will continue to hold the remaining 50% legal and beneficial interest in the Project, and the Company and Lithco shall operate under an unincorporated joint venture in equal proportions (i.e. 50-50), with respect to the Project ("Project JV"). The Lithium Rights JV arrangement will cease upon the commencement of the Project JV.

Negotiations are continuing with the Native Title claimants of the Bald Hill area, the Ngaju people, to gain access to the areas outside the main mining licence, M15/400, for mining and exploration. Exploration drilling outside M15/400 has been delayed until these negotiations have reached an acceptable resolution.

AM&A make the following recommendations with respect to further evaluating and increasing confidence in the Project:

- Further RC and diamond drilling is warranted at the various deposits already identified to explore for additional resources and improve the understanding of the current resources prior to mining.
- A systematic program of inclined 50-80 m deep RAB/RC drilling is recommended along lines across the known geochemical anomalies on the tenements immediately surrounding the main mining licence, M15/400, to test for thicknesses and grades of known outcropping pegmatites as well as to test for pegmatites not outcropping in areas of deep eluvial and alluvial cover.
- A systematic soil sampling program, on appropriate grid spacings governed by the regional geology, is recommended on the Company's tenements distant from M15/400 to test for geochemical anomalism in the soils. These samples should be analysed for lithium as it is an excellent pathfinder element with a wide dispersion halo surrounding mineralised pegmatites. Any geochemical haloes found by the soil sampling can then be followed up with RAB/RC drilling to test for pegmatites.
- All pegmatites found by the first phase reconnaissance drilling should be followed up by RC drilling on an appropriate grid spacing to delimit potential resources.
- Further determinations of bulk density are required to establish higher confidence in grade, metal, and tonnage calculations that feed into future mine production. The determinations can be performed on exposed pegmatite and host rocks in pits or from diamond core.
- As with previous mining by Haddington, blasthole sampling should be continued so as to understand the grade variability within each pegmatite and to assist with blending strategies that would assist with maximising the recovery of the target minerals. These blastholes should also be geologically logged to assist with the mine planning and scheduling process. The collected data should be captured and maintained in its own database, contributing to future mineral resource and ore reserve estimates.

The Directors
Alliance Mineral Assets Limited
Unit 6, 24 Parkland Road
Osborne Park, WA, 6017
Australia

12th August 2016

Dear Directors,

1.0 Introduction

This report has been prepared by AM&A at your request in relation to reporting of the Mineral Resource and Ore Reserves estimates for the Bald Hill Tantalite Project as at 31st March, 2016.

1.1 Purpose of this report

This report (Report) provides updated Mineral Resource and Ore Reserve estimates at the Bald Hill tantalum property (the Property) located in Western Australia and owned by Alliance Mineral Assets Ltd (AMAL). The Report has been prepared by Al Maynard & Associates Pty Ltd (AM&A) in accordance with Singapore Stock Exchange (SGX) mineral, oil and gas guidelines, having been classified and reported using the guidelines of the Australasian code for Reporting of Exploration Results, Mineral Resources and Ore Reserves prepared by the Joint Ore Reserves Committee of the Australasian Institute of Mining and Metallurgy, Australian Institute of Geoscientists and Minerals Council of Australia, December 2012 (the JORC Code 2012).

Mining for tantalite, a tantalum bearing mineral (Ta_2O_5), has previously taken place on the Property. AMAL has re-established the mining and processing operation (the Project) to produce a tantalite concentrate grading 20.7% tantalite as part of the recently completed recommissioning of the processing plants. The final concentrate was then transported to Perth and shipped to Japan.

1.2 Use of report

The Report summarises the Mineral Resource and Ore Reserve estimates for the Bald Hill Tantalite Project as at 31 March 2016 and should not be used or relied upon for any other purpose. This report has been prepared to meet the SGX Catalist rules and fulfil the requirements specified in Practice Note 4C.

1.3 Reporting standard

The SGX Catalist Rules for mineral company listings (Practice Note 4C)¹ require that a Qualified Person's Report be prepared in accordance with one of a number of allowable international reporting standards.

For the purposes of this report, AM&A has adopted the JORC Code (2012)² as the reporting standard. The JORC Code (2012) requires that a public report concerning a company's exploration

¹ SGX Listing Rules, Practice Note 4C Disclosure Requirements for Mineral, Oil and Gas Companies.

² Australasian Joint Ore Reserves Committee (JORC), Australasian Code for Reporting of Exploration Results, Mineral Resources and Ore Reserves (the JORC Code), 2012 edn, effective December 2012, 44 pp., available <[http://www.jorc.org/docs/jorc_code2012\(4\).pdf](http://www.jorc.org/docs/jorc_code2012(4).pdf)>, viewed 5 February 2014.

targets, exploration results, mineral resources, or ore reserves must be based on, and fairly reflect, the information and supporting documentation prepared by a Competent Person. SGX Catalist rules use the term qualified person. In this report, whenever reference is made to a Competent Person as per the JORC Code, it is equivalent to a qualified person as per SGX Catalist rules.

1.4 Basis, Scope and Limitations of this report

This Qualified Persons Report has been prepared in accordance with the requirements of the JORC Code (2012) as adopted by the Australian Institute of Geoscientists ('AIG') and the Australasian Institute of Mining and Metallurgy ('AusIMM').

The information presented in this report is based on technical reports provided by AMAL, supplemented by our own inquiries. At the request of AM&A copies of relevant technical reports and agreements were made available.

This, coupled with general knowledge of the area and the recent site visit provides sufficient information to form an opinion as to the current value of the mineral assets. AMAL has provided AM&A with all available technical, relevant financial and other information required for the purposes of preparing the Report.

In performing its services utilising the JORC Code guidelines, AM&A has relied upon and assumed the accuracy and completeness of all material information that has been provided to it by AMAL and its service providers.

AM&A has no reason to believe that the information provided by AMAL or its service providers are materially inaccurate, misleading, or incomplete. AM&A has not audited the information provided to it. However, it has satisfied itself as to the reasonableness of the information it used.

1.5 Site Visits

Al Maynard and Associates ("AM&A") undertook an initial site visit to the Bald Hill Tantalite Project for AMAL on the 18 February, 2014 and conducted follow up visits on 31 March 2015, 14-18 December 2015 and 18-22 April 2016. Another previous field trip to the site for another unrelated client was conducted in 2002.

1.6 Statement of Independence

This report has been prepared by Allen J. Maynard BAppSc (Geol) is a member of the Australasian Institute of Mining and Metallurgy (MAusIMM) and the Australian Institute of Geoscientists (AIG), a geologist with over 38 continuous years in the industry and 33 years in mineral asset valuation. Mr Maynard has sufficient experience which is relevant to the style of mineralisation and type of deposit under consideration to qualify as a Competent Person as defined in the 2012 Edition of the "Australasian Code for Reporting of Exploration Results, Mineral Resources and Ore Reserves" prepared by the Joint Ore Resources Committee, the Australian Institute of Mining and Metallurgy, Australian Institute of Geoscientists and the Mineral Council of Australia. The author does not hold any interests in AMAL or in any mineral properties which are subject to this report. AMAL will be invoiced and expected to pay a fee for the preparation of this report. This fee comprises a normal, commercial daily rate plus expenses, in accordance to AM&A's standard rates and is no way contingent upon the conclusions of this report.

Tenure

AMAL are 100% holders of ten Exploration Licences (“EL”), one General Purpose Licence (“GPL”), eight Miscellaneous Licences (“L”), five Mining Leases (“ML”) and one Mining Lease application (“MLA”), eight Prospecting Licences (“PL”) and one Retention Licence (“RL”), Table 4 and Figure 1. These tenements are all mineral licences located in the Bald Hill area, 105km southeast of Kalgoorlie in the Eastern Goldfields of Western Australia. The Company has assured Allen J. Maynard (“Independent Qualified Person” or “Competent Person”)) that all licence fees, rates and taxes, exploration expenditures and annual exploration reports have been paid and the tenements are in good standing.

Asset Name	Holder	Issuer's Interest (%)	Development Status	Status	Date Granted	Licence Expiry Date	Area	Unit
E 15/1058	AMAL	100	Exploration Licence	Live	12/03/2009	11/03/2019	9	Block*
E 15/1066	AMAL	100	Exploration Licence	Live	20/08/2009	19/08/2019	39	Block*
E 15/1067	AMAL	100	Exploration Licence	Live	20/08/2009	19/08/2019	39	Block*
E 15/1161	AMAL	100	Exploration Licence	Live	25/01/2011	24/01/2016**	1	Block*
E 15/1162	AMAL	100	Exploration Licence	Live	10/01/2011	9/01/2016**	3	Block*
E 15/1166	AMAL	100	Exploration Licence	Live	31/08/2010	30/08/2015**	5	Block*
E 15/1212	AMAL	100	Exploration Licence	Live	2/05/2011	1/05/2016**	16	Block*
E 15/1353	AMAL	100	Exploration Licence	Live	5/08/2013	4/08/2018	70	Block*
E 15/1492	AMAL	100	Exploration Licence	Pending	-	-	51	Block*
E 15/1493	AMAL	100	Exploration Licence	Pending	-	-	26	Block*
G 15/17	AMAL	100	General Purpose Lease	Live	23/01/2001	22/01/2022	1.43	Ha.
L 15/264	AMAL	100	Miscellaneous Licence	Live	11/10/2006	10/10/2027	3.85	Ha.
L 15/265	AMAL	100	Miscellaneous Licence	Live	11/10/2006	10/10/2027	2.33	Ha.
L 15/266	AMAL	100	Miscellaneous Licence	Live	11/10/2006	10/10/2027	1.44	Ha.
L 15/267	AMAL	100	Miscellaneous Licence	Live	11/10/2006	10/10/2027	3.56	Ha.
L 15/268	AMAL	100	Miscellaneous Licence	Live	11/10/2006	10/10/2027	5.77	Ha.
L 15/269	AMAL	100	Miscellaneous Licence	Live	11/10/2006	10/10/2027	7.19	Ha.
L 15/270	AMAL	100	Miscellaneous Licence	Live	11/10/2006	10/10/2027	7.49	Ha.
L 15/348	AMAL	100	Miscellaneous Licence	Live	5/09/2014	4/09/2035	3.16	Ha.
M 15/1305	AMAL	100	Mining Lease	Live	29/12/2000	28/12/2021	97.89	Ha.
M 15/1308	AMAL	100	Mining Lease	Live	29/12/2000	28/12/2021	92.53	Ha.
M 15/1470	AMAL	100	Mining Lease	Live	13/05/2010	12/05/2031	400	Ha.
M 15/1811	AMAL	100	Mining Lease	Pending	-	-	972.69	Ha.
M 15/400	AMAL	100	Mining Lease	Live	30/08/1988	7/09/2030	501	Ha.
M 59/714	AMAL	100	Mining Lease	Live	27/10/2009	26/10/2030	191.87	Ha.
P 15/5465	AMAL	100	Prospecting Licence	Live	21/07/2010	20/07/2018	149	Ha.

P 15/5466	AMAL	100	Prospecting Licence	Live	21/07/2010	20/07/2018	150	Ha.
P 15/5467	AMAL	100	Prospecting Licence	Live	21/07/2010	20/07/2018	150	Ha.
P 15/5862	AMAL	100	Prospecting Licence	Live	15/10/2014	14/10/2018	199.82	Ha.
P 15/5863	AMAL	100	Prospecting Licence	Live	15/10/2014	14/10/2018	199.8	Ha.
P 15/5864	AMAL	100	Prospecting Licence	Live	15/10/2014	14/10/2018	199.86	Ha.
P 15/5865	AMAL	100	Prospecting Licence	Live	15/10/2014	14/10/2018	199.86	Ha.
P 15/5866	AMAL	100	Prospecting Licence	Live	15/10/2014	14/10/2018	198.81	Ha.
R 15/1	AMAL	100	Retention Licence	Live	9/06/2010	8/06/2016**	973	Ha.

Table 4: Summary of Alliance Minerals Assets Limited tenements. All licences are for minerals exploration and where applicable mining. ** Renewal application submitted

*Block = a graticular block = one minute of latitude x one minute longitude = approximately 3km²

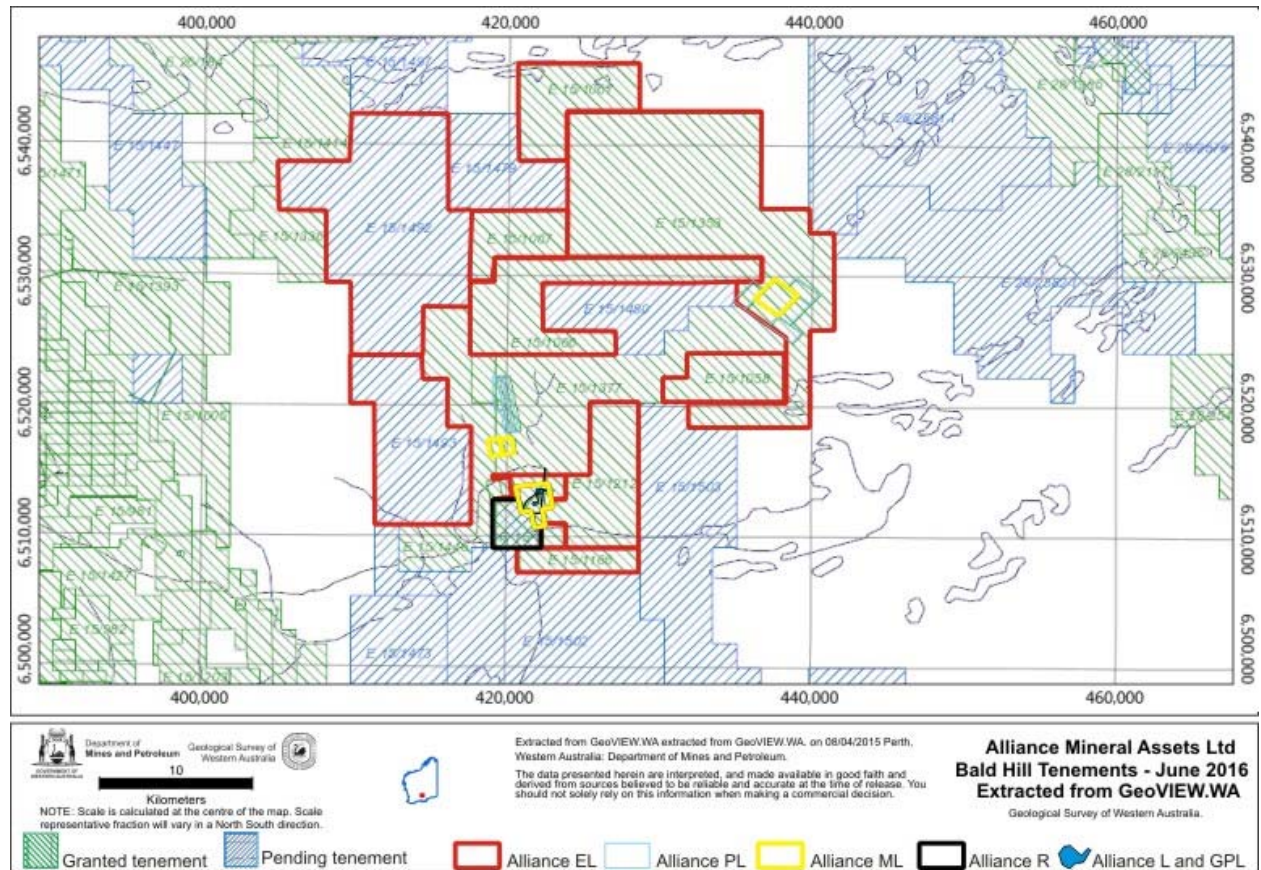


Figure 1: Alliance Mineral Assets Limited tenements.

Native Title

There are no local Aboriginal communities on or near to the project area, although the region is part of the Native Title Claim of the Ngadju-speaking people.

The current Native Title status of all the Company's tenements are summarised in Table 5.

Tenement Id	Native Title Status
Granted	

M15/1305	Native Title determined to be extinguished
M15/1308	Native Title determined to be extinguished
M15/1470	State Mining Deed
M15/400	Pre-Native Title
P15/5465	RSHA executed between Living Waters and Ngadju
P15/5466	RSHA executed between Living Waters and Ngadju
P15/5467	RSHA executed between Living Waters and Ngadju
P15/5862	RSHA accepted
P15/5863	RSHA accepted
P15/5864	RSHA accepted
P15/5865	RSHA accepted
P15/5866	RSHA accepted
R15/1	GLSC has previously indicated an agreement exists
G15/17	Native Title determined to be extinguished
E15/1058	RSHA between Abeh and Ngadju (being replaced by RSHA between AMAL and Ngadju)
E15/1066	RSHA between Abeh and Ngadju (being replaced by RSHA between AMAL and Ngadju)
E15/1067	RSHA between Abeh and Ngadju (being replaced by RSHA between AMAL and Ngadju)
E15/1161	RSHA between Living Waters and Ngaju
E15/1162	RSHA between Living Waters and Ngaju
E15/1166	RSHA between Living Waters and Ngaju
E15/1212	RSHA between Living Waters and Ngaju
E15/1353	RSHA between AMAL and Ngadju
M59/714	State Mining Deed
Pending	
M15/1811	State Deed required (Mining Agreement with Ngadju)

Table 5: Native Title status. RSHA = Regional Standard Heritage Agreement.

The Mining Proposal for Boreline Oxide pit was approved by the WA Mines & Petroleum Department (DMP) in 2015 and the approved pit was mined to supply ore feed for the processing plant commissioning. All the other areas proposed for disturbance by mining activities have also had ethnographic surveys completed that have shown that they are clear of Native Title and included in another Mining Proposal that is being assessed for mining by the DMP. An ethnographic survey has also been completed for Creekside Pit on R15/1 but as yet no Mining Proposal has been submitted to the DMP for mining this deposit.

Should AMAL propose to disturb areas that have not been surveyed or approved for Aboriginal heritage issues further ethnographic surveys will be carried out. AMAL will liaise with the Goldfields Land and Sea Council regarding a Regional Standard Heritage Agreement for each new area to be disturbed.

Royalty

A royalty is payable to the Western Australian government for all tantalite and other minerals produced at Bald Hill. The royalty is as follows:

- Concentrate material – (subject to substantial enrichment through a concentration plant) 5.0 per cent of the royalty value.
- Metal - 2.5 per cent of the royalty value.

This system takes into account processing costs incurred after the mine-head point, price fluctuations, the grade of material and the change in the value as mined ore is processed and value is added.

An ad valorem royalty is calculated as a proportion of the ‘royalty value’ of the mineral. The “royalty value” and components used to calculate the “royalty value” are defined under Regulation 85 of the Mining Regulations 1981 (WA).

Native Title

Within Western Australia the Native Title Act 1993 (Commonwealth), also referred to as NTA, is administered by the State government. This legislation provides for Aboriginal people to claim native title and a process for negotiation and compensation where the land is to be leased out by the State.

Native Title over all the Company’s MLs has been determined to be extinguished, including the main mining lease M15/400, but a State Deed is required before exploration or mining can proceed on the Company’s other tenements.

The Mining Lease Application over the previous Retention Lease R15/1 containing the known Creekside and Fenceline Prospects is now subject to stakeholder consultations with the Native Title Holders. The Company attended their first meeting with the Native Title Tribunal on the 17th February 2015 and are moving to the next stage of negotiations to reach a final agreement.

Regional Standard Heritage Agreements are in place for the ELs and PLs.

Accessibility, Climate, Local Resources, Infrastructure and Physiography

The Bald Hill project is located in the Eastern Goldfields of Western Australia approximately 50 km due east of Widgiemooltha, 62 km southeast of Kambalda and 105 km southeast of Kalgoorlie, Figure 2. Access to site is via a well-made gravel road for 60 km from the bitumen Coolgardie-Esperance Highway. The site is accessible all year round except during periods of high rainfall when the gravel road maybe closed by the shire for short periods until the road dries out again to prevent damage to the road by the passing traffic.



Figure 2: Location map of the Bald Hill tantalite project.

Bald Hill has a semi-arid climate, with the closest weather stations at Norseman, Balladonia, and Kalgoorlie–Boulder recording annual rainfall averages to 2007 of 288, 225, and 261 mm respectively. Rainfall is most consistent during the winter months. However, isolated thunderstorms and remnants of tropical cyclones in the summer months provide sporadic and heavy downfalls that produce substantial runoff. Temperatures in the summer months commonly exceed 35°C, and minimum temperatures during winter commonly drop below 5°C with occasional frosts.

Month	Jan	Feb	Mar	Apr	May	Jun	Jul	Aug	Sep	Oct	Nov	Dec	Year
Record high °C	46.5	44.9	44.5	38.9	33.4	27.6	28.7	32	36.8	40.9	42.9	45	46.5
Average high °C	33.6	32.1	29.5	25.2	20.6	17.5	16.7	18.6	22.3	25.8	28.9	31.9	25.2
Average low °C	18.2	17.8	16	12.6	8.7	6.2	5	5.5	8	11	14	16.5	11.6
Record low °C	8.8	8.5	5.7	1.7	−1.8	−3.0	−3.4	−2.4	−0.6	−1.0	3.1	5.5	−3.4
Average precipitation (mm)	23.6	31.2	24	21.3	26.5	28.9	24.9	21.4	14	14.8	17.8	16.4	264.8
Avg. precipitation days (≥ 0.2mm)	3.9	4.5	4.3	5.3	7.1	8.7	9.2	7.5	5.6	4.3	4.1	3.8	68.3

Table 6: Climate data for Kalgoorlie (100 km to northwest) (after Wikipedia).

The physiography of the Bald Hill area is largely controlled by basement rock types that are overlain by extensive regolith and the Cowan paleo-drainage system that was incised during the Jurassic. Relief is typically low with areas dominated by granitic rocks forming an irregular terrain of gentle undulations interspersed by sheetwash zones and deep regolith cover with claypans and sink holes. The metasedimentary rocks and minor mafic and ultramafic rocks are overlain by extensive sandplains. The sandplains adjacent to the northern extent of Lake Cowan has an average elevation of about 275 m above Australian Height Datum (AHD) and is part of the south to southwesterly draining Cowan paleo-drainage channel. The northern margin of Lake Cowan is dominated by a broad east-northeasterly trending ridge formed by the Paleoproterozoic Binneringie Dyke, which rises from the lake floor to an elevation of about 320 m above sea level. The Proterozoic Woodline Formation forms large northeasterly trending, rock-covered ridges and small, isolated conical hills.

A great deal of the original woodland vegetation was cleared for timber for mining operations in the middle of the last century. However, stands of trees untouched by fire or timber cutters indicate a dominance of mixed woodland to open woodland with saltbush understorey. The broad low ridges and sheetwash plains that dominate the Bald Hill area are mainly covered by mixed eucalypt woodland including *Eucalyptus salmonophloia* (salmon gum), *Eucalyptus salubris* (gimlet), *E. flocktoniae* (merrit) and patches of giant mallee (*E. oleosa*) and black butt (*E. lesouefii*, *E. dundasii*). The eucalypts are intermingled with tall shrubs dominated by broombush (*Eremophila scoparia*), greybush (*Cratystylis concepta*), bluebush (*Maireana sedifolia*), and saltbush (*Atriplex vesicaria*), with a patchy ground layer of grasses and ephemeral herbs.

Wattle, mulga (*Acacia* sp.), and broombush are common on granite-derived soils. Shrubs observed less frequently include *Exocarpos aphyllus*, *Santalum acuminatum* (quandong), and *Santalum spicatum* (sandalwood). In areas where there is a sandy to rubbly outcrop of granitic rock, tall trees are absent and replaced by thickets of broombush (*Eremophila scoparia*). Where there are thick patches of sand overlying granitic rocks, a rich Kwongan* flora grow, including sedges such as *Lepidosperma drummondii*. Patches of spinifex are common on granitic and felsic volcanic rocks.

In and around the playa lake system, vegetation is dominated by samphire (*Halosarcia* sp.), saltbush, bluebush, and greybush. Rounded-leaf pigface (*Disphyma crassifolium*) commonly grows where quartz dykes are exposed in the salt-lake beds and lake edges.

History

Alluvial tantalite has been mined at Bald Hill periodically from the early 1970s. Gwalia Consolidated Limited undertook exploration for tantalite-bearing pegmatites from 1983-1998. Work included mapping, costeaning, and several phases of drilling using RAB, RC, and diamond coring methods. The work identified mineral resources that were considered uneconomic at the time.

Haddington entered into an agreement to develop the resource whereby the tantalite concentrate would be sold to Gwalia Consolidated subsidiary Greenbushes Tin, and mining commenced in 2001 and continued until 2005 when Greenbushes Tin no longer took third party concentrates for processing. It is estimated that Haddington had mined a total of approximately 1.35 million tonnes of pegmatite ore for approximately 822,353 pounds of Ta₂O₅ as tantalite concentrate sold to Greenbushes Tin during this period.

Haddington continued with exploration until 2009.

Living Waters acquired the project and also acquired a number of additional tenements north of the main project area in 2009 and continued with limited exploration to the north of the main pit area.

The Property was transferred to HRM Resources Australia Limited in 2011. On 13 March 2014, HRM changed its name to Alliance Mineral Assets Limited (“AMAL”). Since the acquisition AMAL has continued with RC drilling, especially testing for extensions of the Boreline, North and South open pits. AMAL have also completed mining the oxide resource at Boreline as part of the commissioning of the Company’s processing plants at both Bald Hill and Boulder which was completed in early 2016.

Geological Setting and Mineralisation

Regional Geology

Bald Hill straddles the boundary between the Geological Survey map sheets Mount Belches and Yardina and lies within the southern part of the Eastern Goldfields Superterrane of the Archean Yilgarn Craton. Granitic and metasedimentary rocks are the main bedrock types, with greenstones to the east and west. Bald Hill lies within the Achaean Mount Belches Formation. Flat-lying Cainozoic Eundynie Group sedimentary rocks unconformably overlie the Archean basement and are commonly found on the western margins of playa lakes.

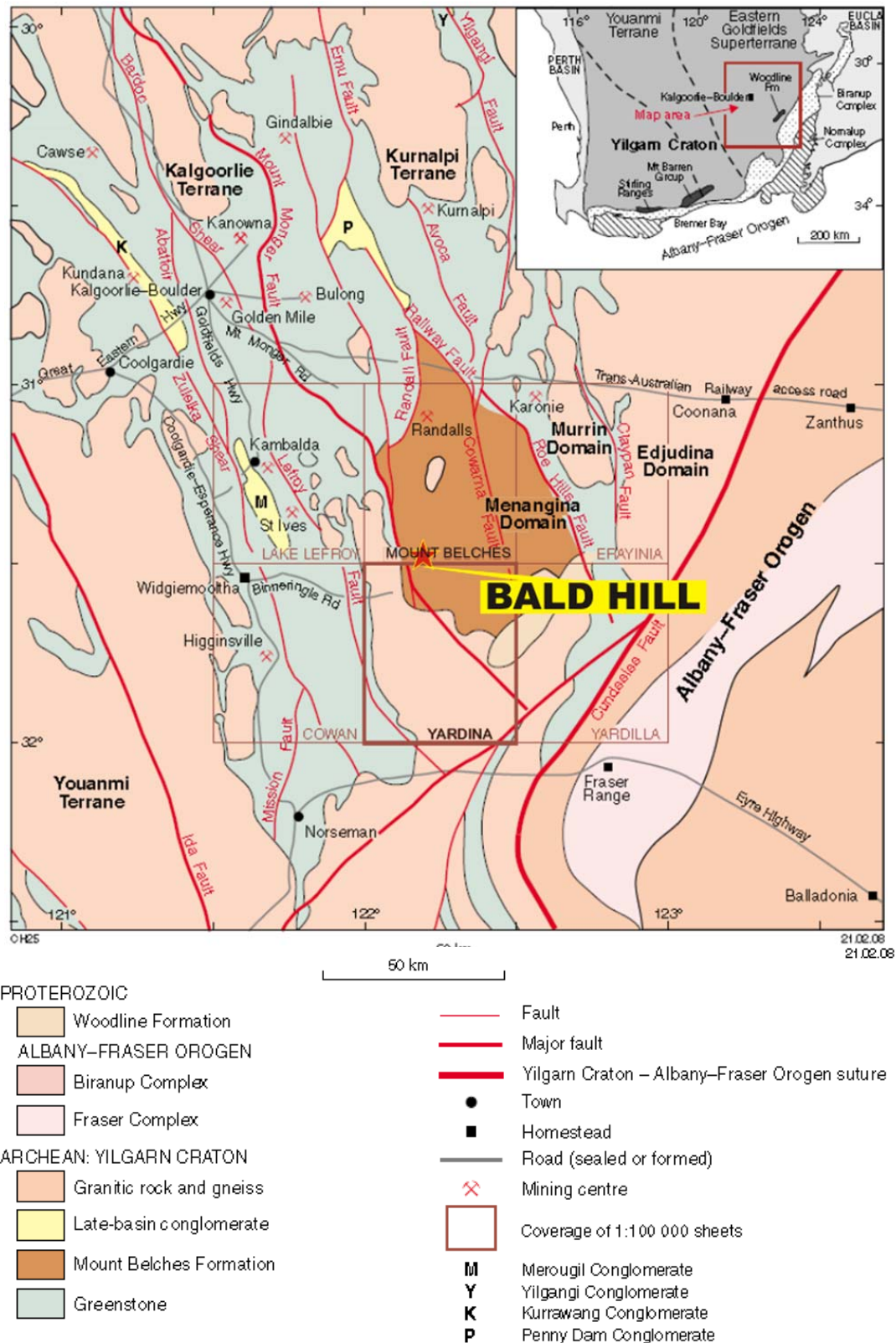


Figure 3: Regional Geology (after Hall and Jones, 2008).

Open to tight upright D_2 folds are well developed in metamorphosed sedimentary rocks of the Mount Belches Formation. D_2 folds have a well-developed axial-planar foliation and fold axes plunge moderately to the northwest, and are the result of east-northeast west-southwest crustal shortening. Regional metamorphism, which probably post-dates D_2 , ranges from greenschist to

amphibolite grade and is overprinted by retrograde chlorite replacing garnet and cordierite. Gentle warping of D₂ folds is rare, but is attributed to the collision of the south-eastern margin of the Yilgarn Craton with East Antarctica as part of the Mawson Craton during the 1345–1140 Ma Albany–Fraser Orogeny (D₃). D₃ Albany–Fraser Orogeny-related deformation is also observed in the Proterozoic rocks of the Woodline Formation, with fold axes of open upright folds and gentle warps trending northeast and broadly parallel to the Yilgarn Craton – Albany–Fraser Orogeny contact.

Archean granitic rocks to the west of Bald Hill are dominated by massive to moderately foliated monzogranites to quartz monzonites (–biotite–hornblende). Minor rock types include syeno-granites and a clinopyroxene-bearing syenite.

Mount Belches Formation (Abe-mh, Abe-mhe, Abe-mhz, Abe-mls)

The Mount Belches Formation is a thick sequence of metamorphosed turbiditic rocks. The Mount Belches Formation is a large fault bound block of metasedimentary rocks that forms a dome above a series of large granitic bodies. Sensitive high-resolution ion microprobe (SHRIMP) U–Pb zircon ages on detrital zircons from Mount Belches Formation sandstone indicate maximum depositional ages of 2666 ± 5 Ma (Krapez et al., 2000) or c. 2667 Ma (Bodorkos et al., 2006). The sequence probably represents deposition by mass-flow traction and turbidity currents in a submarine environment (Painter and Groenewald, 2001).

Mount Belches Formation rocks are dominated by metamorphosed steeply dipping, fine- to coarse grained sandstone, siltstone, and mudstone, with minor conglomerate. Banded iron-formation and chert do not outcrop however aeromagnetic data suggests folded chert at depth beneath Proterozoic rocks of the Woodline Formation and Cainozoic sediments. The sandstone–siltstone sequences (Abe-mh) commonly display graded bedding, parallel and cross-laminations, scours, Bouma sequences, and soft-sediment deformation. Many beds have mudstone as the uppermost interval (now dominated by medium-grained metamorphic biotite or amphibole). In thin section the coarse-grained sandstones and granular conglomerates contain relict detrital-quartz grains (up to 5 mm) interspersed with biotite clots and poikiloblastic plagioclase crystals, with subordinate hornblende, chlorite, muscovite and carbonate, and accessory magnetite, zircon, titanite, tourmaline, pinitized cordierite and apatite. A similar mineral assemblage is found in the mudstone layers, but staurolite, andalusite, and garnet are present where the metamorphic grade is higher and there is a strong schistosity (Abe-mls).

Hornfelsed (Abe-mhe) and metasomatized (Abe-mhz) units of the Mount Belches Formation are most common where metasedimentary rocks are intruded by granitic plutons and dykes, pegmatite veins, quartz veins, as at Bald Hill and the Binneringie Dyke.

Pegmatites (gp)

Pegmatite dykes and pods (gp), probably Archaean, are common at Bald Hill where they intrude metasedimentary rocks of the Mount Belches Formation and granitic rocks. The pegmatite dykes typically comprise very coarse feldspar, books of muscovite, and interstitial quartz. Pegmatites in granitic rocks are particularly abundant in granites that are near outcrops of the Mount Belches Formation and also near north-north westerly trending lineaments, faults, or granitic dykes. Thin (centimetre sized) contact metamorphic haloes are present where the pegmatite intrudes metasedimentary rock, and intense quartz veining is localized around some pegmatite dykes and plugs.

Pegmatite dykes 1–8 m thick that intrude the Mount Belches Formation are mined at the Bald Hill mine for tantalum from tantalite.

Economic Minerals at Bald Hill

The three main minerals of economic importance at Bald Hill are Tantalite (tantalum), Cassiterite (tin) and Spodumene (lithium). Tantalite is the main economic mineral with the other two potentially recoverable as by-products.

Tantalum

Tantalum is a chemical element with symbol Ta and atomic number 73. Tantalum is a rare, hard, blue-grey, lustrous transition metal that is highly corrosion-resistant. It is part of the refractory metals group, which are widely used as minor components in alloys. The chemical inertness of tantalum makes it a valuable substance for laboratory equipment and a substitute for platinum. Tantalum is also used for medical implants and bone repair. Its main use today is in tantalum capacitors in electronic equipment such as mobile phones, DVD players, video game systems and computers. Tantalum, always together with the chemically similar niobium, occurs in the minerals tantalite, columbite and coltan (a mix of columbite and tantalite). Tantalum is a rare metal fifteen times less abundant in the universe than gold comprising just $1.5 \times 10^{-4}\%$ (average approx. 1.5ppm) of the earth's crust.

Several steps are involved in the extraction of tantalum from tantalite. First, the mineral is crushed and concentrated by gravity separation. This is generally carried out near the mine site. Extraction from the mineral begins with a leaching, a step in which the ore is treated with hydrofluoric acid and sulphuric acid to produce water soluble hydrogen fluorides. The tantalum and niobium hydrogen fluorides are then removed from the aqueous solution by liquid-liquid extraction using organic solvents, such as cyclohexanone or methyl isobutyl ketone. The resulting niobium and tantalum potassium-fluorides ($K_2[TaF_7]$, $K_2[NbOF_5]$) can then be separated by fractional crystallization due to their different water solubilities.

All welding of tantalum must be done in an inert atmosphere of argon or helium in order to shield it from contamination with atmospheric gases. Tantalum is not 'solderable'. Grinding tantalum is difficult, especially so for annealed tantalum. In the annealed condition, tantalum is extremely ductile and can be readily formed as metal sheets.

Uses of Tantalum

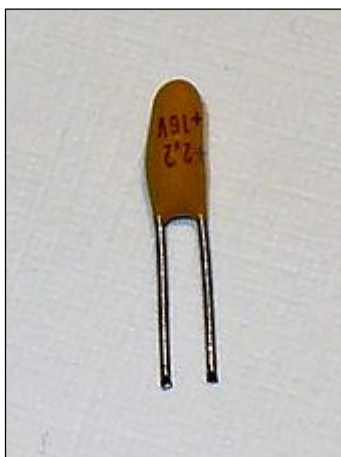


Figure 4: Tantalum electrolytic capacitor (after Wikipedia).

The major use for tantalum, as the metal powder, is in the production of electronic components, mainly capacitors and some high-power resistors. Tantalum electrolytic capacitors exploit the tendency of tantalum to form a protective oxide surface layer, using tantalum powder, pressed into a pellet shape, as one "plate" of the capacitor, the oxide as the dielectric, and an electrolytic solution or conductive solid as the other "plate". Because the dielectric layer can be very thin (thinner than the similar layer in, for instance, an aluminium electrolytic capacitor), a high capacitance can be achieved in a small volume. The size and weight advantages make tantalum capacitors attractive for portable phones, personal computers, and automotive electronics.

Tantalum is also used to produce a variety of alloys that have high melting points, strength, and ductility ideal for making carbide tools for metalworking equipment and in the production of superalloys for jet engine components, chemical process equipment, nuclear reactors, and missile parts. Tantalum can be drawn into fine wires or filaments, which are used for evaporating metals such as aluminium. Since it resists attack by body fluids and is non-irritating, tantalum is widely used in making surgical instruments and implants.

Tantalum is inert against most acids except hydrofluoric acid and hot sulphuric acid, and hot alkaline solutions also cause tantalum to corrode. This property makes it an ideal metal for chemical reaction vessels and pipes for corrosive liquids.

Tantalum is also highly bio-inert and is used as an orthopaedic implant material. The oxide is used to make special high refractive index glass for camera lenses.

Based on estimates published by the United States Geological Survey (USGS) and Geoscience Australia, the world resources of tantalum in 2012 totalled 156 kt. The world's largest holder of tantalum resource is Brazil with an estimated 88 kt, followed by Australia with 60 kt and Canada and Ethiopia with 4 kt each.

Using USGS data, Geoscience Australia estimated world production of tantalum in 2012 to be 765 tonnes (767 tonnes in 2011). Production in 2012 was dominated by Mozambique, with 260 tonnes, which amounted to about 34% of world output. According to the USGS, other main producers were Brazil with 180 tonnes, Congo (Kinshasa) with 95 tonnes, Rwanda with 90 tonnes and Nigeria with 50 tonnes.

Lithium

Lithium is a chemical element with symbol Li and atomic number 3. It is a soft, silver-white metal belonging to the alkali metal group of chemical elements. Under standard conditions it is the lightest metal and the least dense solid element.

Estimates for the Earth's crustal content of lithium range from 20 to 70 ppm by weight making it the 25th most abundant element. Lithium forms a minor part of igneous rocks, with the largest concentrations in granites. Granitic pegmatites provide the greatest abundance of lithium-containing minerals with spodumene, petalite and lepidolite being the most commercially viable sources.

Lithium and its compounds have several industrial applications, including heat-resistant glass and ceramics, lithium grease lubricants, flux additives for iron, steel and aluminium production, lithium batteries and lithium-ion batteries. These uses consume more than three quarters of lithium production.



Figure 5: Pegmatite samples with tantalite and spodumene from Bald Hill.

Tin

Tin is a chemical element with symbol Sn (for Latin: stannum) and atomic number 50. It is a silvery, malleable metal that is not easily oxidized in air, obtained chiefly from the mineral cassiterite where it occurs as tin dioxide, SnO₂.

The first alloy, used on a large scale since 3,000 BC, was bronze, an alloy of tin and copper. Pewter, which is an alloy of 85–90% tin with the remainder commonly consisting of copper, antimony and lead, was used for flatware from the Bronze Age until the 20th century. In modern times tin is used in many alloys, most notably tin/lead soft solders, which are typically 60% or more tin. Another large application for tin is corrosion-resistant tin plating of steel. Because of its low toxicity, tin-plated metal is commonly used for food packaging as tin cans, which are made mostly of steel.

Local Geology

The Company's tenements all are located within the Mount Belches Formation, generally north-striking steeply dipping Archaean metasediments (schists and greywackes) and granitoids, that in part have been intruded by pegmatite dykes. These dykes are typically flat dipping but they can range from horizontal to vertical and even can appear folded and host the tantalum (tantalite), lithium (spodumene) and tin (cassiterite) mineralisation.

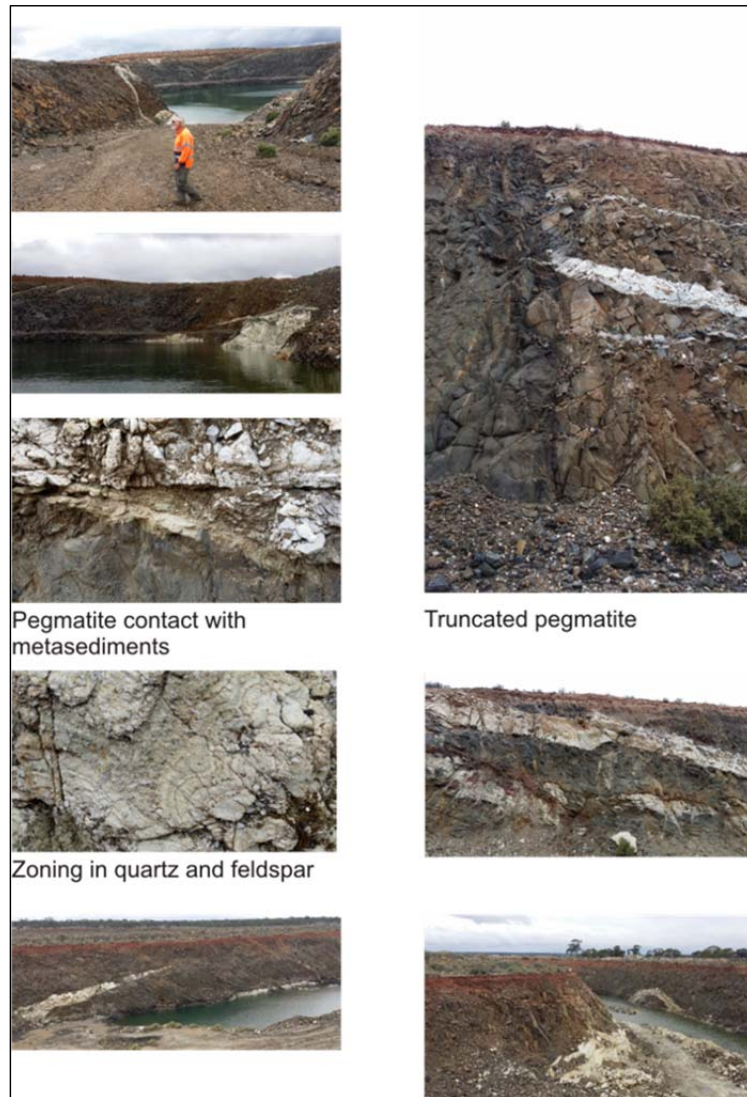


Figure 6: Photos showing pegmatites and their structural orientations.

Generally the pegmatites parallel the regional foliation, occurring as gently dipping sheets and as steeply dipping veins. These pegmatites vary in width and are generally comprised of quartz-albite-orthoclase-muscovite-spodumene in varying amounts. Late-stage albitisation in the central part of the main outcrop area has resulted in fine-grained, banded, sugary pegmatites with visible fine-grained, disseminated tantalite. A thin hornfels characterised by needle hornblende crystals is often observed as an alteration halo in country rocks adjacent to the pegmatites. Tantalite generally occurs as fine disseminated crystals commonly associated with fine-grained albite zones or as coarse crystals associated with cleavelandite.

Weathering of the pegmatites has yielded secondary accumulations of tantalite in alluvial/eluvial deposits.

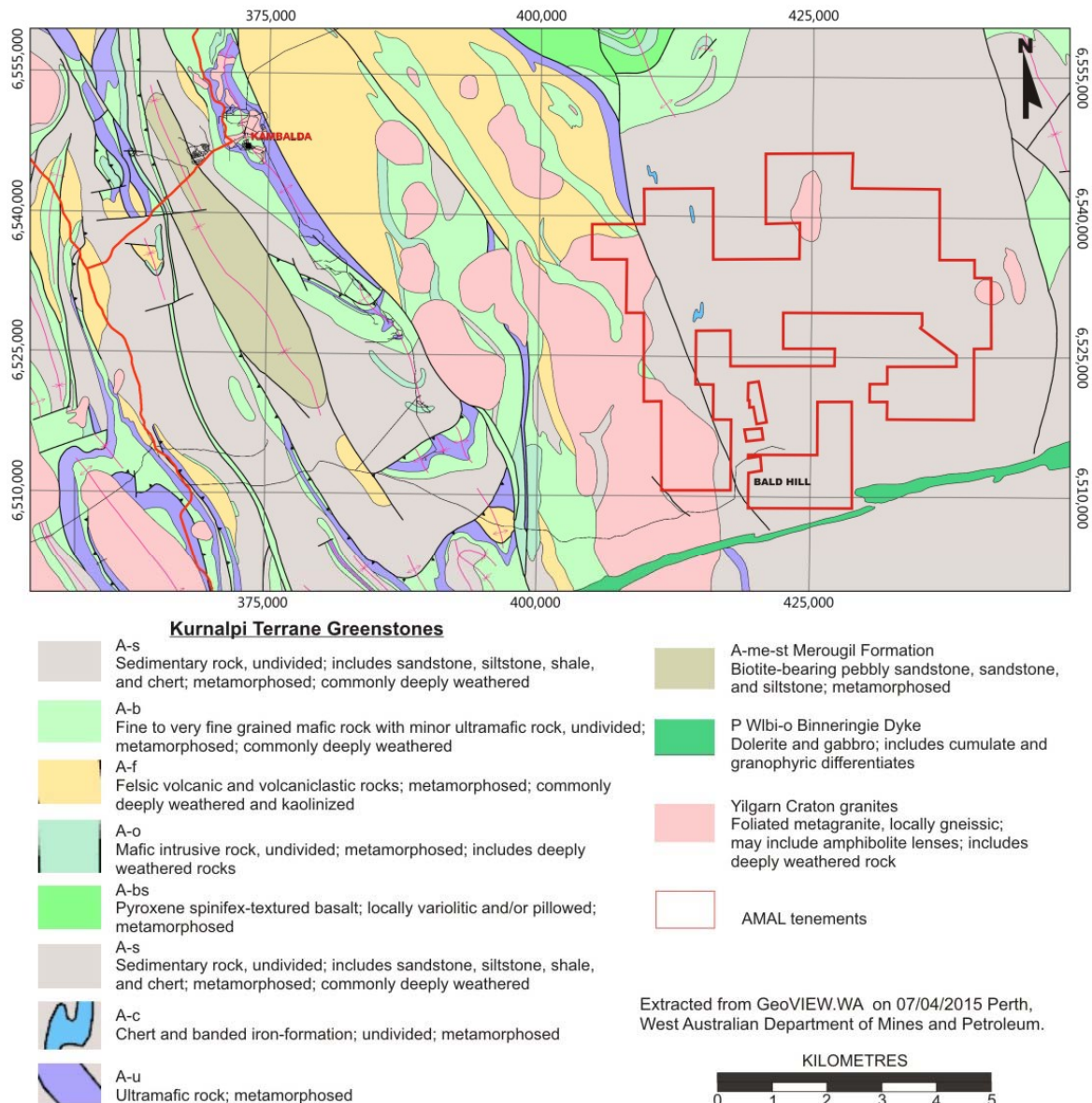


Figure 7: Local Geology.

Geochemical surveys carried out by Haddington and confirmed by the December 2015 soil sampling by AMAL have determined that lithium grades in the soil and bedrock are an excellent indicator of mineralised pegmatites. Rock chip sampling and mapping, aided by air-photography and satellite imagery, has identified numerous pegmatite outcrops and lithium geochemical exploration targets at Bald Hill, Figure 8. Many of these targets include mapped pegmatites that to date have not been tested by drilling.

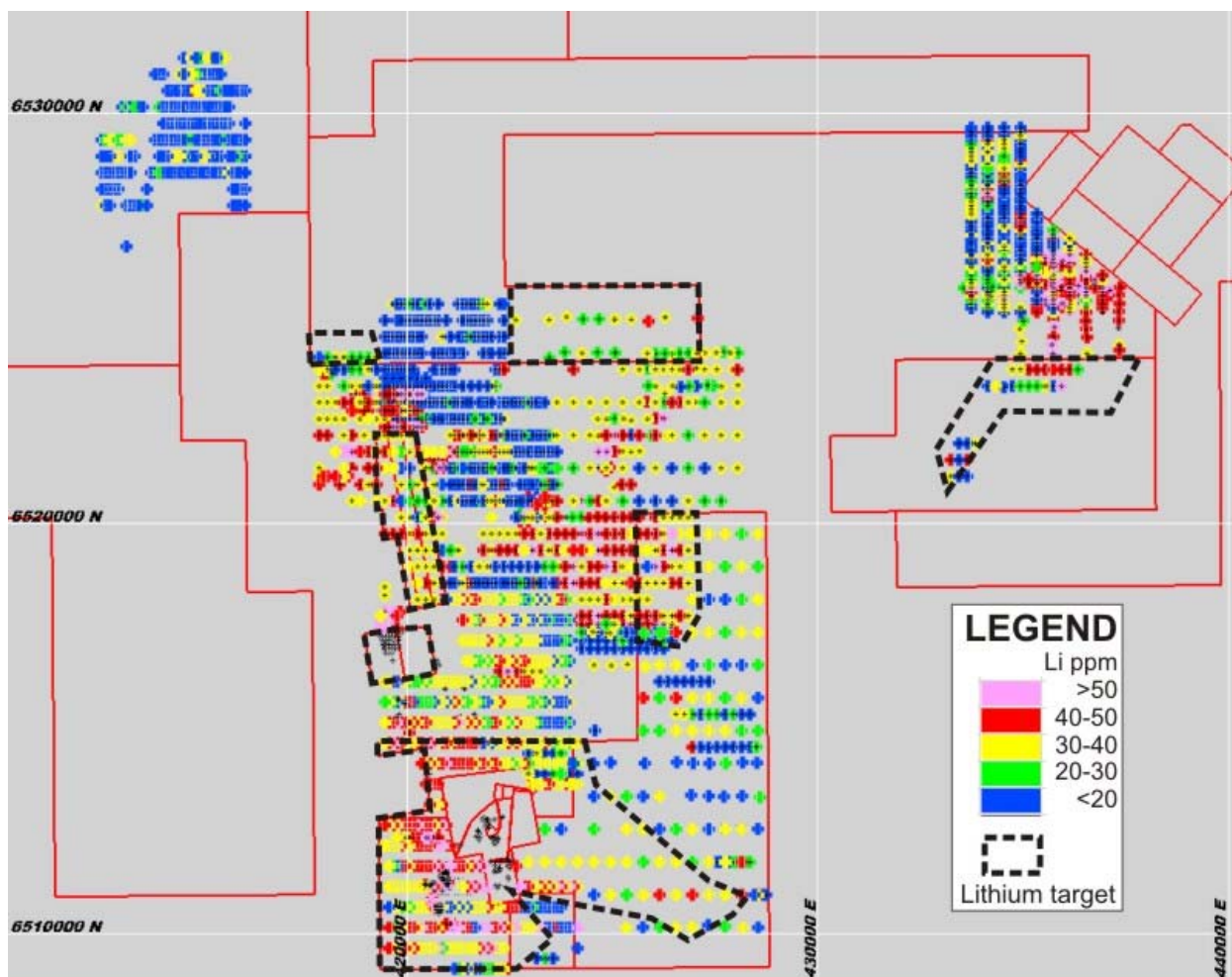


Figure 8: Lithium exploration targets at Bald Hill on the Company's tenements. (within dashed black lines)

Drilling

A total of 2,382 drillholes and 62 costeans were completed at Bald Hill between 1983 and November 2014 for a total of 38,983 metres of drilling and 1,610m of costeaning, Table 7, Table 8 and Figure 9.

Drill Type	Intervals Count	Li Count	Ta Count	Sn Count	Au Count
Auger	334	334	0	0	0
Costean	423	0	423	0	0
Diamond	265	0	265	0	0
RAB	904	459	475	7	0
RC	12,577	1,575	8,037	1,845	0
Vacuum	297	296	0	0	288
TOTAL	14,800	2,664	9,200	1,852	288

Table 7: Drilling and assay statistics. (Inside AMAL tenements only)

The majority of drilling is vertical. There are 132 drillholes inclined at -60° in the database.

For costeans, an azimuth with a zero or small dip is recorded to define their orientation. The orientation and lengths were validated against available maps and electronic data sets.

The water table in the mine site area is at least 15 m below ground surface and confined to steeply dipping, north–south-trending shear zones. Local water bore analyses indicate hypersaline water with total dissolved salts (TDS) >200,000 mg/L and pH 5.8–6.95. Groundwater is not likely to have adversely affected the RC and diamond samples however there is concern that the RAB intersections below the water table could be contaminated.

The digital drilling database inherited when AMAL purchased the Project was found to contain numerous errors and especially missing holes and some of the suite of assays actually analysed. When the extent of the problems became apparent the database was reconstructed from scratch by AM&A in 2016 by downloading all the historic exploration annual reports filed in the Department of Mines and Petroleum WAMEX web site for all the Company’s tenements and adjacent tenements owned by other parties along strike of the pegmatites at Bald Hill. This drilling and geochemical sampling data was compiled into new “clean” Excel spreadsheets. The newly reconstructed database included 634 new drill holes and their assays. Of most importance was a complete set lithium assays from Haddington’s regional RAB drilling program which included several important lithium anomalies that will help with the planned lithium exploration focus.

AM&A checked, by referring to original log sheets, the collar locations, drillhole depths, geological logging and assay results for a portion of the database from the 2014 drilling completed by AMAL and no errors were detected.

Hole Series	Type	Date Drilled	Operator	Number	Metres Drilled	Average Depth
C01-C53	Costean	1983	Sons of Gwalia	62	1,610	26.0
H01-H12	RAB	1983	Sons of Gwalia	12	122	10.2
BH85.08-BH85.31	RC	1985	Sons of Gwalia	7	151	21.5
1-69	RC	1987	Sons of Gwalia	69	1,240	18.0
70-231	RC	1988	Sons of Gwalia	162	1,737	10.7
M1-M7	Diamond	1996	Sons of Gwalia	7	98	14.0
RRC01-RRC18	RC	1996	Sons of Gwalia	18	311	17.3
SOG063-SOG725	Vacuum	1996	Sons of Gwalia	334	668	2.0
BHD237-BHD0258	Diamond	2000	Haddington	22	314	14.3
BHC260-BHC341	RC	2001	Haddington	81	2,164	26.7
BHC342-BHC559	RC	2002	Haddington	218	6563	30.1
BHC560-BHC772	RC	2003	Haddington	188	3760	20.0
BHR0627-BHR0646	RAB	2003	Haddington	20	349	17.5
BHC885-BHC912	RC	2004	Haddington	28	1253	44.8
BHR0773-BHR0884	RAB	2004	Haddington	94	2011	21.4
BHV321-BHV768	Vacuum	2004	Haddington	297	758	2.6
BHA122-280	Auger	2005	Haddington	82	190	2.3
BHC913-BHC1475	RC	2005	Haddington	180	4053	22.5
BHR1045-BHR1859	RAB	2005	Haddington	313	4711.5	15.1
BHC1477-BHC1521	RC	2006	Haddington	31	833	26.9
BHR1860-BHR2016	RAB	2006	Haddington	51	1181.5	23.2
BHSC01-BHSC36	RC	2010	HRM(AMAL)	35	1,309	37.4
AMBC001-AMBC133	RC	2014	AMAL	133	5,206	39.1
Total	RC			1,150	28,580	24.9
Total	Diamond			29	412	14.2
Total	RAB			490	8,375	17.1
Total	Auger			82	190	2.3
Total	Costean			62	1,610	26.0
Total	Vacuum			631	1,426	2.3
Grand Total				2,444	40,593	16.6

Table 8: Summary of drillholes after drilling database reconstructed by AM&A in 2016.

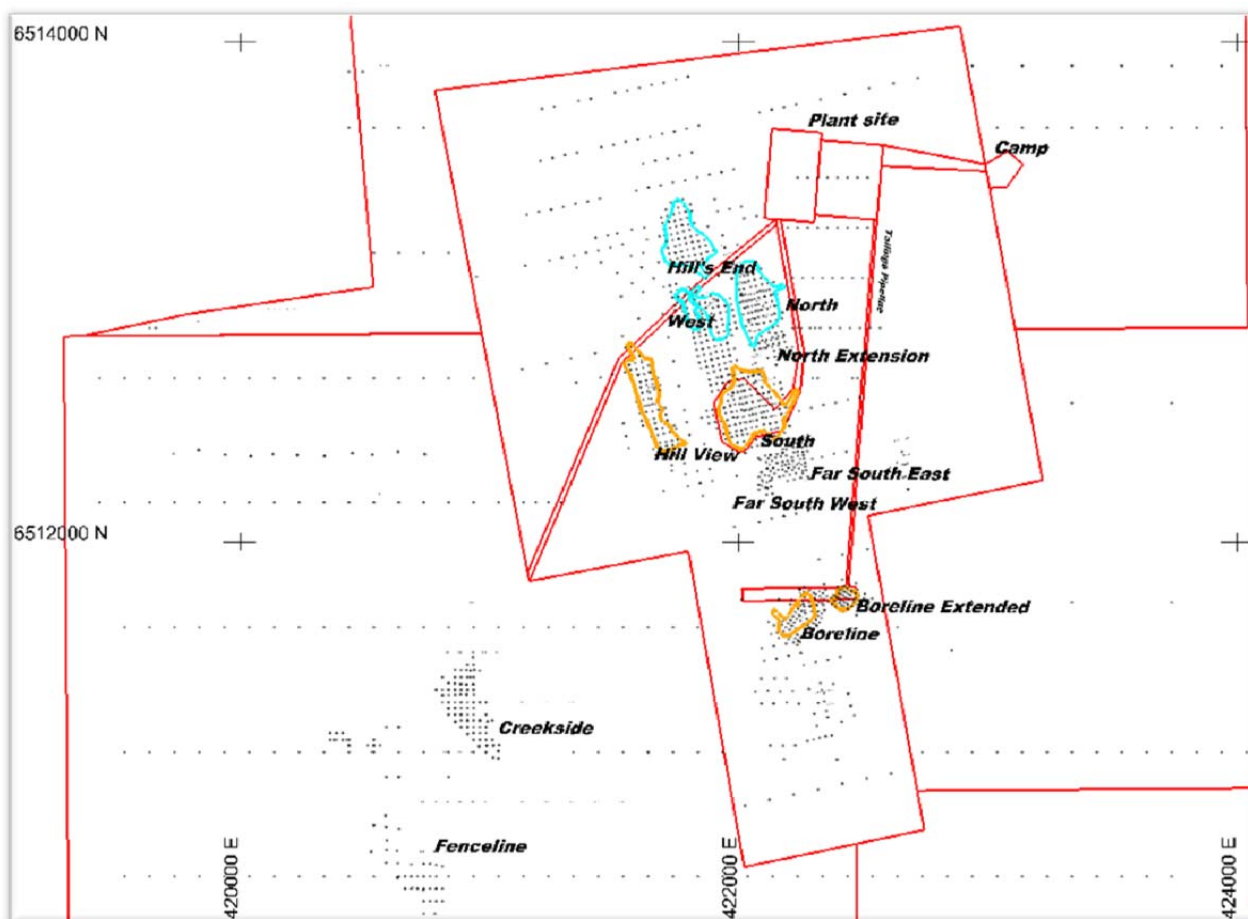


Figure 9: Map showing drill collar locations in vicinity of main deposits.

The huge majority of the drillholes modelled for resource estimation are vertical and nominally spaced on a 20m by 20m rectangular grid rotated approximately 35 degrees to the east, reflecting the original local grid orientation, except at Creekside where the grid follows the MGA grid. Some of the holes prior to 2014 are closer spaced. The drillhole spacing is considered by AM&A to be adequate for Mineral Resource estimation at the classifications reported.

Collar Surveys and Topographic Control (resource drilling only)

The drill collar coordinates were originally derived from a pegged 50m by 50m local grid surveyed in 1983 that was resurveyed in 1996. These drilling coordinates have been transformed since 2014 to GDA94 coordinates.

Current drilling is surveyed using a Differential GPS by a licenced surveyor to produce GDA94 coordinates.

Although most drillholes have a surveyed collar elevation (relative to mean sea level), there were 127 drillholes with no collar elevation and a further 74 drillholes where there was a mismatch with the topography digital terrain model. The collar elevations for these 205 drillholes were adjusted to match the topographic digital terrain model.

The area has a flat relief and topographic control so topographic maps generated from Differential GPS surveys of the drill hole collars carried out by a licenced surveyor are of sufficient accuracy for resource estimation and mine planning at Bald Hill.

Sample Preparation, Analyses and Security

Only the 2014 drilling carried out by AMAL have properly recorded QA/QC data and adequate reporting of the sampling and assay procedures followed. This section only considers the 2014 drilling QA/QC unless otherwise stated. The 2014 drilling makes up the majority of the holes used to estimate the Central and Boreline resources.

There are no records of chip recoveries or sample weights for the RC and RAB drilling so it is not possible to establish if a relationship between sample recovery and sample grades exists. Since most of the tantalite is relatively fine-grained and the larger crystals highly brittle, the opportunity for sample bias is considered negligible.

Geological logs exist for all the drillholes in their entirety but samples have generally only been submitted for assay within and adjacent to the pegmatites.

RC samples in the AMAL 2014 drilling programs were collected at 1 m intervals and riffle split on-site to produce a subsample less than 5kg. The RC drilling sampling and sample size are considered robust for sampling the tantalite mineralisation. The drillhole logs indicate that almost all of the samples were dry.

The historic pre-2014 sampling and analytical procedures followed by the then current operators, Sons of Gwalia 1983 – 1996 and Haddington 2000 – 2009, are believed to be in line with general sampling practices at the time the samples were collected. Both AMC and Varley, after carrying out statistical and graphical analyses of the data, determined that quality of the data was sound. AM&A therefore is of the opinion that the sampling of the RC and diamond drillholes would meet the standards required by the JORC Code (2012) for resource estimation in the categories nominated. The RAB drilling and costean sampling, which cannot be verified as being accurate, are only suitable for assisting with geological interpretation and not for grade interpolation in resource modelling.

Field duplicates, laboratory standards and laboratory repeats were used at varying frequency through the years to monitor sampling and analyses since 2001.

The samples prior to 2014 were all analysed for tantalum using the XRF assay technique. During the period that mining was in operation the samples were analysed at the site laboratory while the rest of the samples were analysed by independent laboratories. The samples for the July-August 2014 drilling at Boreline and November 2014 drilling in the Central Area were assayed by Sodium Peroxide Fusion / ICP-MS Analysis by Bureau Veritas, Perth, Western Australia (formerly Ultra Trace Pty Ltd) in five batches.

PF100 Sodium Peroxide Fusion and Acid Dissolution

An aliquot of sample is fused with Sodium Peroxide in either a zirconia crucible or alumina crucible. The melt is dissolved in dilute Hydrochloric acid and the solution analysed. This process provides complete dissolution of most minerals including silicates. Volatile elements are lost at the high fusion temperatures.

PF102 ICP-MS Analysis – 6 Elements. All Detection Limits in PPM

Inductively coupled plasma mass spectrometry (ICP-MS) is a type of mass spectrometry which is capable of detecting metals and several non-metals by ionizing the sample with inductively coupled plasma and then using a mass spectrometer to separate and quantify those ions.

Sn (10)	Li (1)	Ta (0.5)	Nb (5)	Rb (0.5)	Cs (0.5)
---------	--------	----------	--------	----------	----------

Table 9: Method codes and elements analysed using XRF102 and detection limits (ppm).

The assays from the Boreline and Central Area drilling were reported in result files containing the QA/QC laboratory standard assays, drill duplicate assays and laboratory duplicate assays. All the standard, laboratory repeats and field duplicate Ta assays were charted for comparison against expected and original results, Figure 10 to Figure 12 and no problems with the sampling and assaying were apparent.

For the July-August and November 2014 drilling 1,299 original assays were reported and 144 duplicates were reported so approximately 11% of the assays were drill sample duplicates.

Internal Laboratory Standards

The standards used and their certified grades are shown below in Table 10.

Laboratory Standard	Li ppm	Sn ppm	Ta ppm
Gannet ST-BM-21/310	11	-	-
NCS dc 86304 Lithium Ore	10,500	100	-
SARM 3 NIM – L Lujavrite	45	-	23.5
SY - 4	40	-	1

Table 10: Certified Results for Laboratory Standards.

The lab standards results were charted for each standard and the charts below, Figure 10, show the assay results with tolerance lines of +/- 5% and +/- 10%.

It can be seen from Figure 10 that the Ta₂O₅ assays for most of the standards are generally within +/- 5% of the expected value but do go to the +/-10% limits. It is noted by AM&A that the standards used are all lower than the average Ta₂O₅ grade of the resources but the assay results indicate that the sampling and laboratory assays are sound and properly calibrated therefore meeting the requirements for reliable resource modelling.

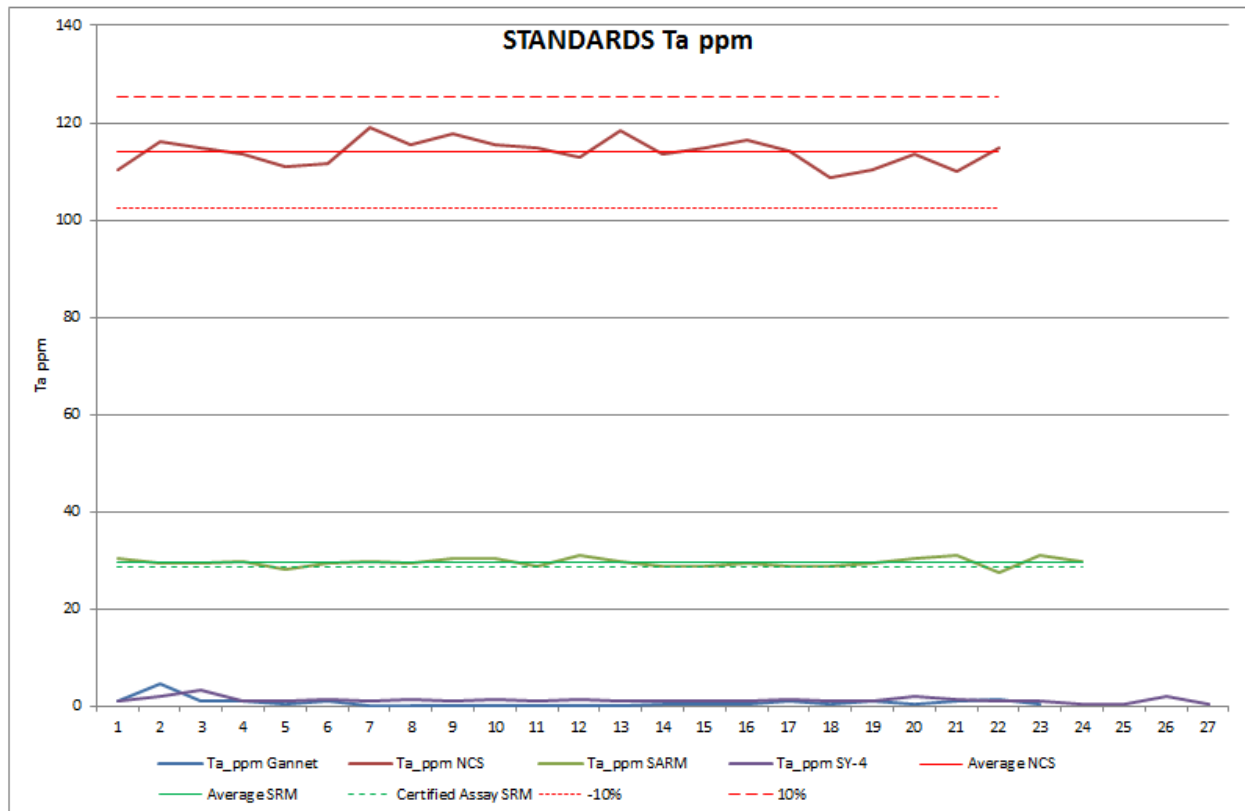


Figure 10: Laboratory Standards results for 2014 RC drilling only.

Drill Sample Duplicates

The drill sample duplicate assays which were taken approximately every tenth drill sample were compared by plotting a correlation graph between the original and duplicate assays, Figure 11. The two sets of assays correlated well with no unusual outliers indicating that the quality of the sampling and assays is robust.

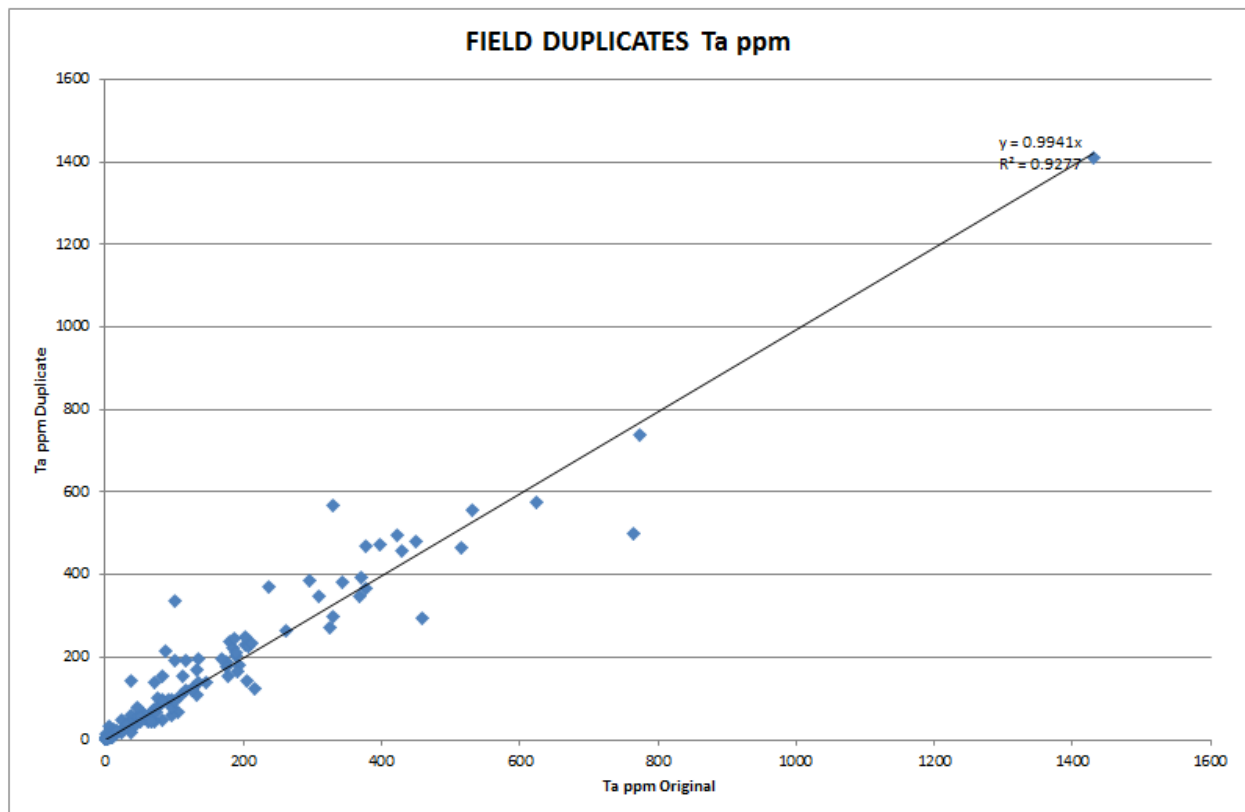


Figure 11: Correlation graph of original Vs field duplicate sample Ta_2O_5 analyses for 2014 drilling only.

The repeat analysis results, with a R^2 correlation coefficient of 0.9277, are considered to be acceptable for resource estimation for the style of mineralisation being modelled.

Internal Laboratory Repeats

The laboratory processed 87 internal laboratory repeat assays for the 1,299 drilling sample assays reported at approximately one for each 15 drilling samples. The assay results were compared by plotting a correlation graph between the original and duplicate assays, Figure 12. The excellent correlation of 0.9937 indicates that there are no obvious problems with the laboratory's assay repeatability.

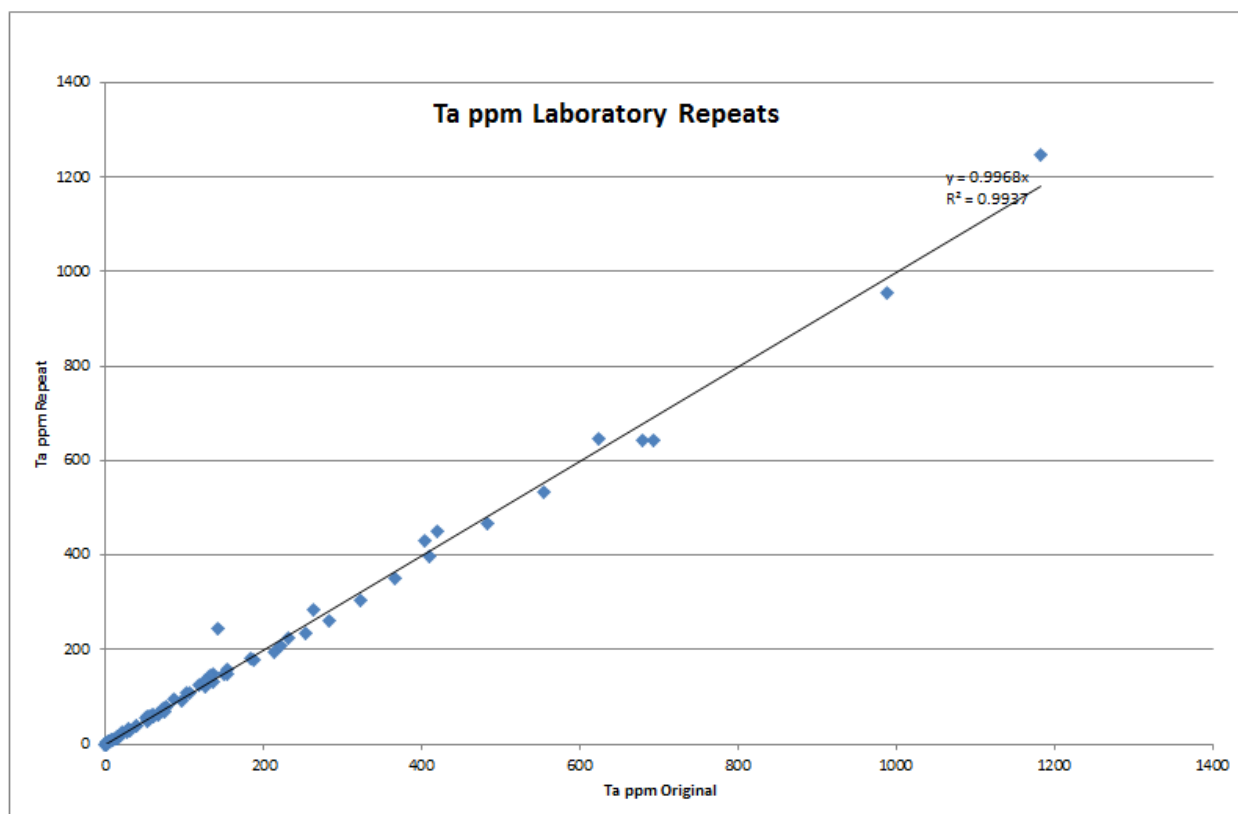


Figure 12: Laboratory repeat assay results.

All drilling data has been loaded to an Access database and rigorously validated prior to use including graphical verification to confirm that the Ta_2O_5 assays correlated with the assigned downhole lithologies with the pegmatites having the elevated grades.

Data Verification

The historic drillhole data, compiled earlier by AMC, was supplied as an Access file to AMAL which was then imported into Excel and Gemcom software by Ray Varley of Geological Resource Management (GRM) for validation and errors were detected. All the problems were resolved after consultation with Timothy Monks, AMAL geologist, who was involved with the project since the Haddington era. AMAL supplied the drillhole data for all of the AMBC prefixed holes from the 2014 drilling. This data was also similarly validated and checked by Varley for errors and corrected as required.

The database contains the following:

Collars, Survey (downhole), Geology/Lithology, Weathering, Assays (original), Assays (for estimation; no negative values or zeros). The survey coordinate grid used is GDA94.

AM&A also validated the combined AMC/2014 drilling database statistically and graphically comparing the geological logging with the assays in MineMap software. AM&A are of the opinion that this data was of sufficient accuracy and reliability for resource estimation modelling.

Bulk Density

Haddington determined and reported the bulk densities for pegmatite spanning the weathering profile from the weathered/oxide surface to fresh at depth, Table 3. Based on these results, bulk densities of 1.92t/m³ for oxide pegmatite, 2.36t/m³ for transitional pegmatite and 2.63t/m³ for fresh pegmatite were used by AMC and Varley for resource modelling.

Lithology	Weathering State	Sample Location	Bulk Density (t/m ³)
Pegmatite	Fresh	South Pit	2.65
		South Pit	2.63
		South Pit	2.62
		South Pit	2.61
		South Pit	2.64
	Mean Fresh Pegmatite Bulk Density		2.63
	Transitional	Cotter Costean	2.41
		Cotter Costean	2.29
		Cotter Costean	2.39
	Mean Transitional Pegmatite Bulk Density		2.36
	Oxide	Boreline Pit	1.96
		Boreline Pit	1.90
		Boreline Pit	1.90
	Mean Oxide Pegmatite Bulk Density		1.92

Table 11: GTS Report Bulk Density Results.

The weathering profile logging of the 2014 drill holes AMBC001 to 058 was used to create base of oxidation and top of fresh rock surfaces. These surfaces were then expanded to cover the extent of the modelled 3D pegmatite solids and then used to inform the block model by assigning the accepted bulk densities to blocks within the oxide, transitional and fresh weathering profile surfaces.

Mineral Processing

The processing plant used by Haddington was purchased by the Company and is being used to treat the Bald Hill ore. This plant, when operated by Haddington, over the mine-life recovered 64.3% of the Ta₂O₅ from the ore producing a concentrate averaging 94,900 ppm (9.49%) Ta₂O₅.

Processing Plant Commissioning

During late 2015/early 2016 the Bald Hill gravity processing plant and Boulder secondary plant were commissioned using ore mined from the Boreline Oxide pit. The Boreline Oxide ore was chosen for commissioning because the relatively soft ore did not require the mobilisation of a primary crusher and could be fed directly into the processing plant. This ore, being oxidised and clayey, presented its own problems as the clay tends to coat the tantalite and form clumps reducing the effectiveness of the screening and gravity separation. As a result, the tantalite recoveries were always expected to be lower than for the typical fresh ore.

Early during the commissioning it was evident that a significant portion of the ore was being rejected as scats, i.e. oversized material rejected before being fed to the recovery spirals, and some of the feed to the spirals was too coarse. To overcome these problems a Vertical Shaft Impact crusher (VSI)

was installed to crush the finer scats as well as reduce the overall feed size to the spirals to improve heavy mineral recovery. After the VSI was installed the tantalite recovery in the primary plant significantly improved from 29% before installation to 52% after installation. It is expected that the tantalite recovery in the plant will improve further with fresh unweathered ore without sticky clays and with the installation of a crusher and mill to further reduce the size of the feed to the spirals.

A significant portion of the ore feed remains unprocessed as “oversize scats” which will be processed after a suitable crusher is installed. Once these scats have been processed, and their recoverable contained tantalite recovered, the overall tantalite recovery from the mined ore feed will therefore also be improved.

Several tantalite concentrates were produced during the plant commissioning and these were very high grade, >25% tantalite, with low levels of contamination with deleterious minerals and therefore exceeding the minimum specifications for a high value product. Two samples of tantalite concentrates were sent to Mitsubishi Corporation RtM Japan (“Mitsubishi”) that were analysed by two of their leading Japanese customers, Taki Chemicals and Mitsui Mining & Smelting, who advised that the samples are “likely to be suitable” for their processes.

Processing Path	Ore	Ta ₂ O ₅ Assay	Ta ₂ O ₅ metal	Recovery	
	tonnes	ppm	kg	%	
ROM	27,000		159.93	4318.3	
Scats unprocessed	5,741		105.64	606.48	
Ore actually processed	21,259		174.6	3,711.74	
Primary plant recovery (Before VSI installed)					29%
Primary concentrate (Before VSI installed)	75.15		9,516.03	715.16	
Primary plant recovery (After VSI installed)					52%
Primary concentrate (After VSI)	98.29		6,529.66	641.79	
Secondary Plant recovery					95%
Secondary concentrate	19.9		64,506.2	1,285.6	
Beneficiation Recovery					94%
Beneficiation concentrate	5.8		207,430.5	1,203.2	
Overall Recovery (Before VSI installed)					26%
Overall Recovery (After VSI installed)					46%

Table 12: Reconciliation of the Boreline Oxide ore processed during Bald Hill processing plant commissioning.

ROM = Run of mine stockpile for ore at plant prior to processing

VSI = Vertical Shaft Impact crusher in plant

Recovery = Tantalite recovered (%) at processing stage indicated.

As well as producing a tantalite concentrate, several other heavy mineral concentrates were produced including high grade garnet, spodumene (lithium) and cassiterite (tin) concentrates at sufficient grade to be sold as by-products.

AM&A concludes that there are sufficient resources at a sufficient grade to warrant the Company's planned full scale mining and production of high quality tantalite concentrates subject to obtaining all requisite mining approvals.

Mineral Resources and Ore Reserves

This report, including the resource and reserve estimates, complies with the 2012 edition of the *Australasian Code for Reporting of Exploration Results, Mineral Resources and Ore Reserves* (the 'JORC Code (2012)'). Key definitions of this code are as follows:

A 'Mineral Resource' is a concentration or occurrence of solid material of economic interest in or on the Earth's crust in such form, grade (or quality), and quantity that there are reasonable prospects for eventual economic extraction. The location, quantity, grade (or quality), continuity and other geological characteristics of a Mineral Resource are known, estimated or interpreted from specific geological evidence and knowledge, including sampling. Mineral Resources are sub-divided, in order of increasing geological confidence, into Inferred, Indicated and Measured categories.

*An '**Inferred Mineral Resource**' is that part of a Mineral Resource for which quantity and grade (or quality) are estimated on the basis of limited geological evidence and sampling. Geological evidence is sufficient to imply but not verify geological and grade (or quality) continuity. It is based on exploration, sampling and testing information gathered through appropriate techniques from locations such as outcrops, trenches, pits, workings and drillholes. An Inferred Mineral Resource has a lower level of confidence than that applying to an Indicated Mineral Resource and must not be converted to an Ore Reserve. It is reasonably expected that the majority of Inferred Mineral Resources could be upgraded to Indicated Mineral Resources with continued exploration.*

*An '**Indicated Mineral Resource**' is that part of a Mineral Resource for which quantity, grade (or quality), densities, shape and physical characteristics are estimated with sufficient confidence to allow the application of Modifying Factors in sufficient detail to support mine planning and evaluation of the economic viability of the deposit. Geological evidence is derived from adequately detailed and reliable exploration, sampling and testing gathered through appropriate techniques from locations such as outcrops, trenches, pits, workings and drillholes, and is sufficient to assume geological and grade (or quality) continuity between points of observation where data and samples are gathered. An Indicated Mineral Resource has a lower level of confidence than that applying to a Measured Mineral Resource and may only be converted to a Probable Ore Reserve.*

*A '**Measured Mineral Resource**' is that part of a Mineral Resource for which quantity, grade (or quality), densities, shape, and physical characteristics are*

estimated with confidence sufficient to allow the application of Modifying Factors to support detailed mine planning and final evaluation of the economic viability of the deposit. Geological evidence is derived from detailed and reliable exploration, sampling and testing gathered through appropriate techniques from locations such as outcrops, trenches, pits, workings and drillholes, and is sufficient to confirm geological and grade (or quality) continuity between points of observation where data and samples are gathered. A Measured Mineral Resource has a higher level of confidence than that applying to either an Indicated Mineral Resource or an Inferred Mineral Resource. It may be converted to a Proved Ore Reserve or under certain circumstances to a Probable Ore Reserve.

*An ‘**Ore Reserve**’ is the economically mineable part of a Measured and/or Indicated Mineral Resource. It includes diluting materials and allowances for losses, which may occur when the material is mined or extracted and is defined by studies at Pre-Feasibility or Feasibility level as appropriate that include application of Modifying Factors. Such studies demonstrate that, at the time of reporting, extraction could reasonably be justified. The reference point at which Reserves are defined is usually the point where the ore is delivered to the processing plant.*

*‘**Modifying Factors**’ are considerations used to convert Mineral Resources to Ore Reserves. These include, but are not restricted to, mining, processing, metallurgical, infrastructure, economic, marketing, legal, environmental, social and governmental factors.*

*A ‘**Probable Ore Reserve**’ is the economically mineable part of an Indicated, and in some circumstances, a Measured Mineral Resource. The confidence in the Modifying Factors applying to a Probable Ore Reserve is lower than that applying to a Proved Ore Reserve.*

*A ‘**Proved Ore Reserve**’ is the economically mineable part of a Measured Mineral Resource. A Proved Ore Reserve implies a high degree of confidence in the Modifying Factors.*

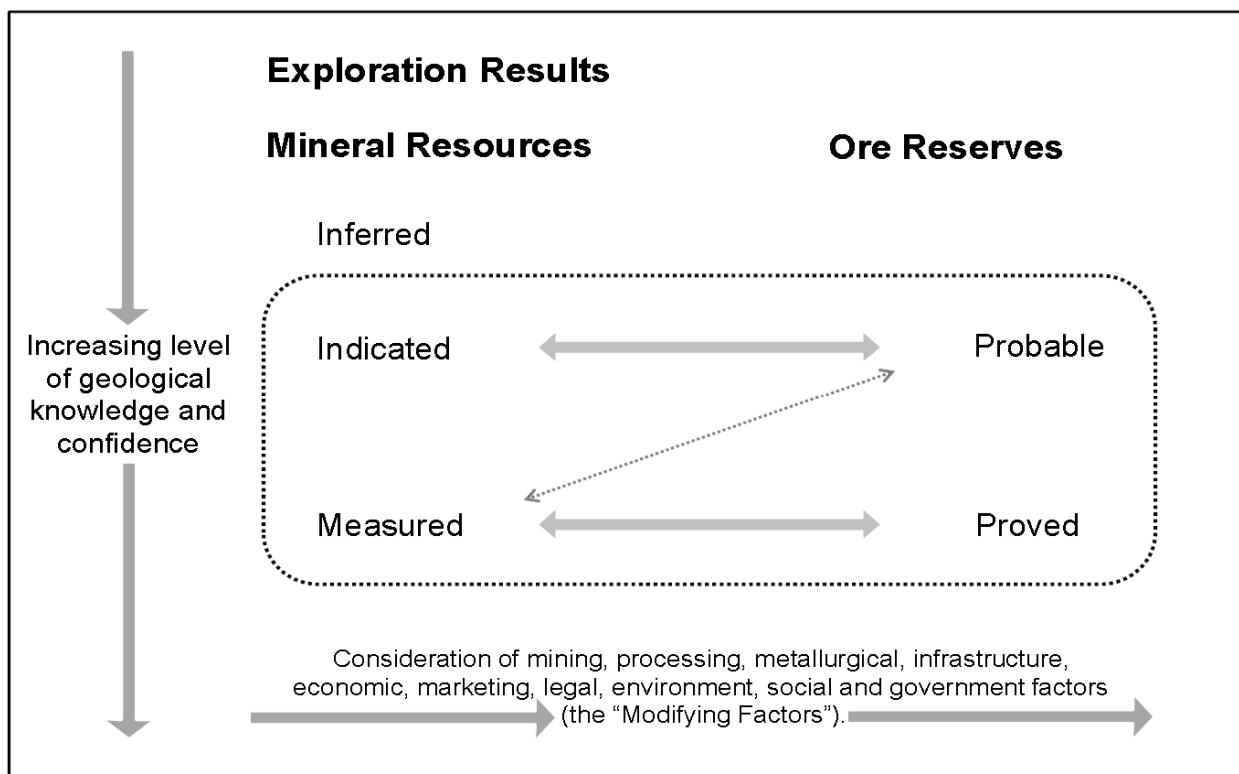


Figure 13: General relationship between Exploration Results, Mineral Resources and Ore Reserves.

All the resource modelling and estimation considered for this report was commissioned by AMAL and carried out by Mr Alex Virisheff of AMC Consultants and Ray Varley of Geological Resource Management (GRM) in June 2014 and March 2015 respectively. Mr Virisheff is a Fellow of the Australian Institute of Mining and Metallurgy ('AusIMM') and Mr Varley is a Member of The Australian Institute of Geoscientists ('AIG') and both are independent contractors/consultants and have sufficient experience which is relevant to the style of mineralisation and type of deposit under consideration and to the activity which he is undertaking to qualify as a Competent Person as defined in the 2012 Edition of the 'Australasian Code for Reporting of Exploration Results, Mineral Resources and Ore Reserves' (the JORC Code).

The available data, as previously described, was compiled into a series of Excel spreadsheets for validation purposes. Assay data was checked against original assay sheets where available and, in particular, where the results were considered potentially erroneous by checking graphically of assays against logged lithologies. Errors generated due to from-to and assaying or lithology overlap errors were rectified when the data from the Excel spreadsheets was imported into the software used in the estimation.

Exploration and mining history in the Bald Hill area has shown that tantalite mineralisation is confined to pegmatite intrusions. Geological logs and Ta₂O₅ grades were used to create a series of pegmatite wireframes that constrain the tantalite mineralisation for the purpose of Mineral Resource estimation. Some of the pegmatites are relatively thin so only pegmatites greater than 1

m in thickness were considered. The geometry of the pegmatites can change rapidly over short distances and, as such, knowledge of their distribution is critical to a robust estimate.

Closed wireframes of minimum thickness >1m were constructed according to the geological understanding of the areas and AMC restricted the wireframes so that they only contained Ta₂O₅ grades of ≥ 100 ppm. Varley did not isolate the low grades in his wireframes. AMC allowed interstitial lower grades only where the grade intercepts of the pegmatites within the wireframe averaged greater than the chosen cut-off of 100 ppm Ta₂O₅. Wireframes were extended halfway between holes and adjacent sections. 1m drill sample assays from within each of the wireframes separately were interpolated into block models of 10mY by 10X by 2mZ (AMC) and 10mY by 10X by 1mZ (Varley). Wireframe percentages were calculated for each block. Block estimates were made for Ta₂O₅ using ordinary kriging controlled by anisotropic variogram models which reflected the overall geology. All estimates used ellipsoid sample searches orientated to the variogram directions. Since there were no significant high grade outliers, no top cuts were applied to the assay data used for interpolating the grades.

AMC resources for Creekside are quoted with a lower cut-off for the model cells of 160 ppm Ta₂O₅ while the resources for all the other resources that were estimated by Varley are quoted without a lower cut so thereby including all the wireframed pegmatites.

It was assumed that selective open-pit mining methods will be applied, similar to those that operated from 2001 to 2005 with a minimum mining thickness greater and 1m.

Since the previous Independent Qualified Person's report ("IQPR") dated 16 July 2015 and resource/reserve statement of 31 March 2015 there has been no additional resource modelling. In April 2015 27,000 tonnes of ore was mined from the Boreline Oxide reserve which was used to commission the Company's gravity processing plant at Bald Hill. The Indicated resources within the planned pits at Boreline and Central have been converted to reserves in May 2016; further details are set out in Ore Reserves section of this report below. The resource estimates as at 31 March 2016 for the Bald Hill deposits are summarised below in

Category	2015		2016		Remarks
	Tonnes (millions)	Grade Ta ₂ O ₅ (ppm)	Tonnes (millions)	Grade Ta ₂ O ₅ (ppm)	
Resources*					
Measured	0	0	0	0	
Indicated	2.57	340	0.65	306	
Inferred	0.1	367	1.1	339	
Total	2.67	341	1.7	326	

Table 13.

Category	2015		2016		Remarks
	Tonnes (millions)	Grade Ta ₂ O ₅ (ppm)	Tonnes (millions)	Grade Ta ₂ O ₅ (ppm)	
Resources*					
Measured	0	0	0	0	
Indicated	2.57	340	0.65	306	
Inferred	0.1	367	1.1	339	
Total	2.67	341	1.7	326	

Table 13: Resource Summary for Bald Hill outside mined pits (AMC Consultants 2014 using 100ppm Ta₂O₅ lower cut-off, Varley, 2015) at 31 March 2016. Note: See Ore Reserve section of this report for details on Reserves, Reserves are exclusive of Resources. *2015 Indicated resources from Central and Boreline converted to reserves.

Exploration Potential

Further RC and diamond drilling is warranted at the various deposits on the main mining lease (M15/400) to explore for additional resources and improve the understanding of the current resources prior to mining.

There are also a number of other prospects on the surrounding tenements, Figure 8, some with old workings, that have mapped well-developed pegmatite bodies hosting tantalite and lithium mineralisation along with geochemical anomalies identified by earlier drilling that have not as yet been explored in enough detail to estimate mineral resources. A review of these areas was provided by AM&A, 2011 and is summarised in the following paragraphs.

There are a number of prospects located within 5 km of the process plant, on the existing mining lease and exploration licences immediately surrounding the mining lease that have potential to add mineral resources. These are at various stages of evaluation, and include Eastern Pegmatites, Creekside North, Creekside West, Cotter, Cotter West, and Fenceline.

The Bull Oak Dam area is located approximately 5 km to the north-northwest of the process plant, and hosts numerous tantalite-bearing pegmatite dykes that have been delineated and partially tested by the previous leaseholders. Six prospects have been identified to date, and are called the B12/Hill, Pegmatite, Tin Bushes, Old Rich Patch, Soft Pegmatite, and Nothing Special. At each prospect, pegmatite dykes that are tantalite-bearing have been discovered, with rock chip sample results up to 1,190 ppm Ta reported. Exploration is at an early stage.

The Madoonia area incorporates the tenements that lie 10–30 km to the north and north-east of the process plant. Exploration is at an early stage, but pegmatite dykes have been mapped over a significant strike length, suggesting that the area has the potential to host tantalite mineralisation. Previous broad scale reconnaissance exploration has defined a number of low order tantalum anomalies. The potential of this area has not been fully tested and remains a good exploration target.

Ore Reserves

Since the previous IQPR the Company commissioned Gary McCrae (“McCrae”) of Minecomp Pty Ltd (“Minecomp”), an independent mining consultant, to design open pits for the resources at Boreline and Central in addition to the previously reported Oxide Reserves at Boreline.

The Oxide Reserves at Boreline were mined since the last IQPR in a small open pit by AMAL during April/May 2015 and the mined ore used to commission the Bald Hill and Boulder processing plants to determine the actual operating costs, mining recovery and mining dilution factors as well as process plant recoveries.

The only resources converted to reserves are at Boreline and Central that were modelled and estimated by Varley. The reserve estimates are based on Whittle shells and pit designs by McCrae. Whittle shells are software generated pit shells that consider a range of mining and metallurgical costs and operating parameters to determine which part of a resource can be mined profitably and return a maximum profit.

The Measured and Indicated resources within the Whittle shells were converted to reserves after applying modifying factors that take into account mining recovery and dilution. Based on past mining experience by Haddington and the mining of the Boreline Oxide pit, separating the white pegmatite from the dark grey country rock was simple, even after blasting, so a mining recovery of 95% and a 5% dilution was assumed. The net effect of these two factors was a 5% reduction of the estimated resource grade with the tonnes remaining the unchanged.

McCrae relied on revenue and cost estimates and other mining factors, geotechnical details and metallurgical recoveries supplied by AMAL based on actual values incurred and current during the Boreline Oxide pit and by Haddington during previous mining.

The following excerpts come from the McCrae pit design reports for Boreline and Central.

Design and Evaluation Parameters

Natural Surface Topography

Survey information of Bald Hill Central Zone open pits mined (“as-mined surface”) by historical mining campaigns was supplied by AMAL in a DXF format. This file was titled “allsite MGA tri2.dxf”. These files were converted to a SURPAC string file format and then where possible, stitched together to represent crest, toe and spot height strings. Digital terrain models (DTMs) of these files were then created. Note is made that the accuracy of these files is subjective, with subsequent backfilling of some of the areas with tailings and/or waste rock material removing the possibility of cross-checking the accuracy of the supplied information.

An aerial survey was completed by Mark Moir of Survey Dynamics in late 2015. This file was utilised as the existing surface topography (“as-built surface”) and including existing open pits, waste dumps, and outlying topographical information. Note should be made that this file superseded the previously utilised Phil Jones supplied surface topographical file “allsite MGA tri current2.dxf”, which incorporated the pits as backfilled (i.e. current)

Ore Resource Model

Ray Varley's Bald Hill Central Zone August 2015 mineral resource estimate model was supplied in a CSV (comma separated values) format. This CSV file was titled "baldhill_central2minecomp.csv".

Information contained within this CSV included:-

*Block Centroid Positions
Block Grades (Cut and Uncut Ta₂O₅, Sn, Nb₂O₅, Cs, Li, Rb, U and Th)
Block Density (Oxide 1.92, Transitional 2.26 and Primary 2.63)
Block Resource Classification
Block Weathering
Pegmatite Proportion of Block
In-situ Portion of Block*

In addition to the mineral resource estimate model, Ray Varley supplied (post optimisation, pre-mine design) the orezone wireframes upon which the resource model was based. Combining this orezone wireframe with the resource estimate model and the results of the optimisation study enabled significantly increased design efficiencies.

\$US/\$Au Exchange Rate

The exchange rate utilised for this study was 0.75. This figure was supplied by AMAL personnel.

Ta₂O₅ Price

The Ta₂O₅ price utilised for this study was US\$100/lb or \$Au 250.525/kg. Note that no credits or penalties were attributed to the Lithium and Tin content of the ore.

Royalties

Where applicable, State and 3rd Party royalties totalling 5% (of revenue) have been incorporated into this study. This figure was supplied by AMAL personnel.

Selling Cost

Where applicable a 2% (of revenue) selling cost has been incorporated into this study. This figure was supplied by AMAL personnel.

Cost Information

The cost information used for the financial calculations in this study was obtained from a number of sources.

Mining load and haul, drill and blast and contractor management costs were supplied by mining contractors as budget estimates.

Site rehabilitation, crusher loading, screening and operation, maintenance, head office administration and Bald Hill Site operating costs supplied by Paul Robson formerly of AMAL.

Amortisation, Depreciation, Capital and Start-Up Costs

No allowances have been made for amortisation, depreciation, capital or start-up costs.

Mining Recovery and Dilution

A mining dilution factor of 5% and a mining recovery factor of 95% have been incorporated into the mining reserve calculations and subsequent financial evaluation process. These factors were supplied by AMAL.

Design and Evaluation Parameters - continued

Metallurgical Recovery

The metallurgical recovery used for the mining reserve calculations and subsequent financial evaluation process was 67.5% regardless of the ore type. . This figure was again supplied by Paul Robson.

Mine Design Parameters

The design parameters applied were generally in line with those utilised in the Bald Hill Central Zone open pits mined to date. Where pits were mined to depths of approximately 20m, slightly more aggressive parameters were used. Waste rock backfill batters were design to be 350 whilst batters mined through tailings backfill were designed at 200. Ramp design parameters suitable to six-wheel articulated dump trucks were incorporated into the designs. Passing bays were incorporated into the ramp designs where required.

In summary:-

Pit: - Boreline

Approximate Depth: - 23m

In-situ Rock Batters: - 60 degrees

Berms: - Nil

Ramp: - Nominally at 1 in 7 - 8m Wide (minimum)

Pit: - Boreline Extended

Approximate Depth: - 15m

Batters: - 60 degrees

Berms: - Nil

Ramp: - Nominally at 1 in 7 - 8m Wide (minimum)

Pit: - Far South West

Approximate Depth: - 14m

In-situ Rock Batters: - 60 degrees

Berms: - Nil

Ramp: - Nominally at 1 in 7 - 8m Wide (minimum)

Pit: - Far South East

Approximate Depth: - 22m

In-situ Rock Batters: - 60 degrees

Berms: - Nil

Ramp: - Nominally at 1 in 7 - 8m Wide (minimum)

Pit: - Hillview

Approximate Depth: - 31m

In-situ Rock Batters: - 65 degrees

Berms: - Positioned to limit the maximum face height to 20m – 5m Wide

Ramp: - Nominally at 1 in 7 - 8m Wide (minimum)

Pit: - Hillsend

Approximate Depth: - 33m

In-situ Rock Batters: - 65 degrees

Berms: - Positioned to limit the maximum face height to 20m – 5m Wide

Ramp: - Nominally at 1 in 7 - 8m Wide (minimum)

Pit: - North Stage 1

Approximate Depth: - 24m

In-situ Rock Batters: - All 60 degrees

Berms: - Nil

Ramp: - Nominally at 1 in 7 - 8m Wide (minimum)

Pit: - North Stage 2

Approximate Depth: - 18m

In-situ Rock Batters: - All 65 degrees

Berms: - Nil

Ramp: - Nominally at 1 in 7 - 8m Wide (minimum)

Pit: - North Stage 3

Approximate Depth: - 50m

In-situ Rock Batters: - All 65 degrees

Berms: - Positioned to limit the maximum face height to 20m – 5m Wide

Ramp: - Nominally at 1 in 7 - 8m Wide (minimum)

Pit: - West

Approximate Depth: - 20m

In-situ Rock Batters: - All 65 degrees

Berms: - Nil

Ramp: - Nominally at 1 in 7 - 8m Wide (minimum)

Pit: - Central

Approximate Depth: - 63m

In-situ Rock Batters: - South West Wall

Surface -> 280m RL 55 degrees

280 -> 260m RL 60 degrees

260 -> Base 65 degrees

In-situ Rock Batters: - Remaining Walls

Surface -> 280m RL 60 degrees

260 -> Base 65 degrees

Berms: - Positioned to limit the maximum face height to 20m – 5m Wide

Ramp: - Nominally at 1 in 7 - 8m Wide (minimum)

Processed Ore/Waste Cut-off Grade

The processed ore/waste cut-off grade used for the evaluation of the open pit and open pit cutback designs was 165ppm.

The costs and factors used to calculate this grade were:-

- Ta₂O₅ price.
- \$US/\$Au exchange rate.
- Royalties.
- Selling Costs
- Mining Dilution Factor
- Costs comprising of Ore/Waste Differential and the Total Processing Costs.
- Metallurgical Recovery

The formula used to calculate the cut-off grade was:-

$$\frac{\{(Sum\ of\ Costs)/[(Metallurgical\ Recovery)*(Ta_2O_5\ Price - Royalties - Selling\ Costs)]\} * (1 + Mining\ Dilution\ Factor)}$$

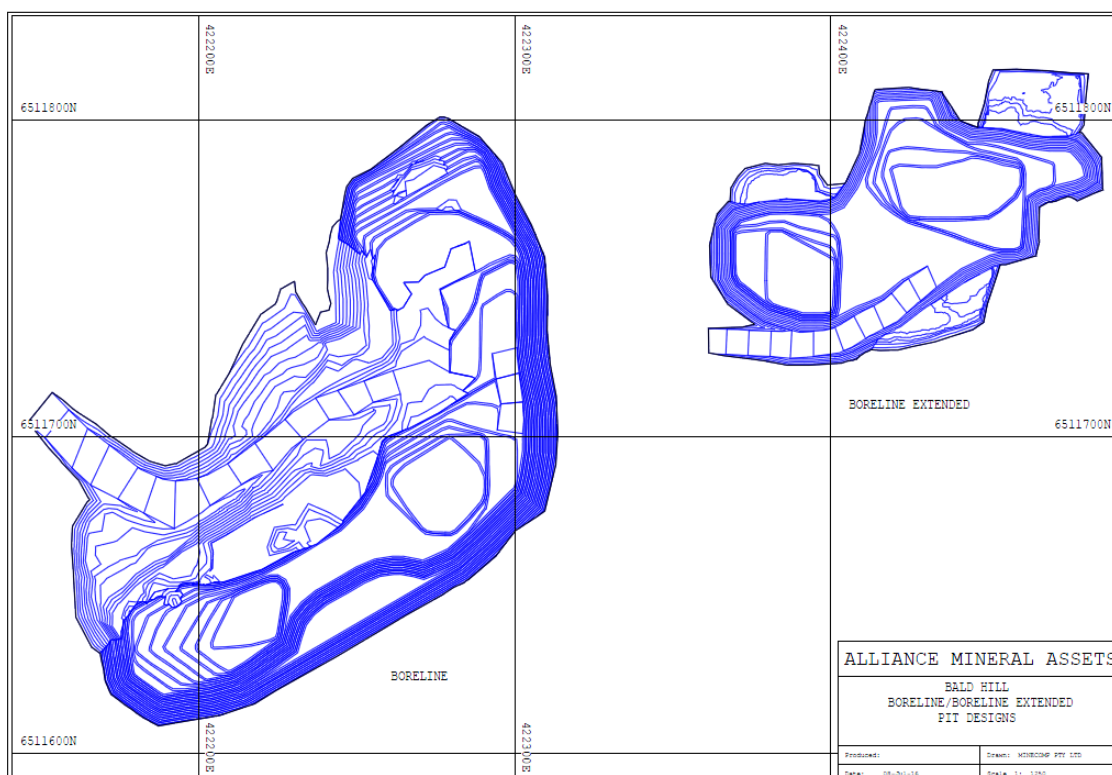


Figure 14 Boreline and Boreline Extended open pit designs (McCrae 2016)

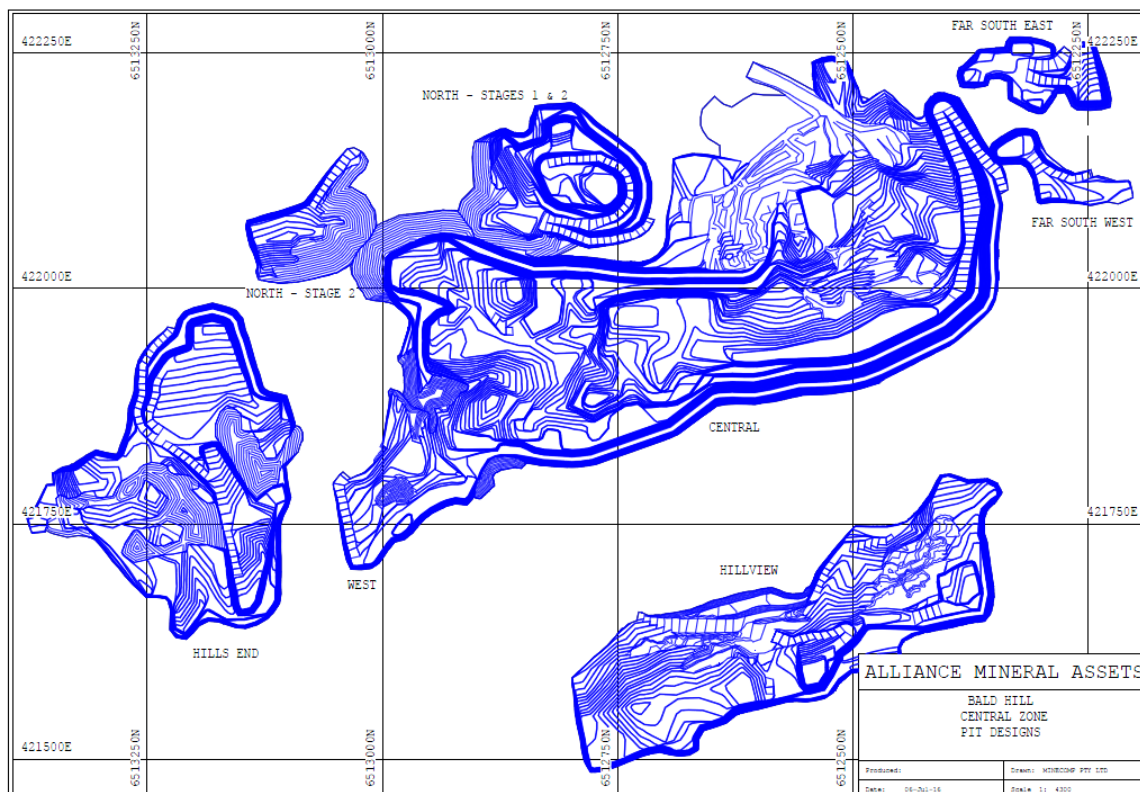


Figure 15 Central Zone open pit designs (McCrae 2016)

The costs used by McCrae would have changed little since the study, however the revenues may have varied with market fluctuations. The cut-off grades and quality parameters applied are based on actual mining and processing experience by AMAL in the Boreline Oxide pit and by Haddington during previous mining.

The McCrae open pit designs incorporate and extend deeper and along strike previously mined open pits. The open pit designs include Inferred and unclassified blocks modelled by Varley however only Indicated and Measured Resources were used to estimate Ore Reserves

The tantalite price used was the current price as indicated to AMAL by a major potential buyer of tantalite concentrates, Mitsubishi, at the time of the study. No value was assumed for other expected by-products such as lithium in spodumene and tin in cassiterite.

AMAL held discussions with a major potential buyer of tantalite concentrates, Mitsubishi, with regards concentrate quality and specifications as well as quantities they may accept once production at Bald Hill commences. Mitsubishi tested tantalite concentrates produced at Bald Hill and they have communicated in writing that the concentrate is of premium quality and suitable for their processing.

All the quoted reserves are classified as Probable based only on Measured and Indicated resource estimates. It is the Competent Person's view that this classification is appropriate considering the resource classification and the level of the Pre-Feasibility Study.

The Ore Reserves for Central and Boreline estimated by McCrae are summarised in below.

Category	2015		2016		Remarks
	Tonnes (millions)	Grade Ta ₂ O ₅ (ppm)	Tonnes (millions)	Grade Ta ₂ O ₅ (ppm)	
Reserves					
Proved	0	0	0	0	
Probable	0.02	187	1.69	303	Central and Boreline
Total	0.02	187	1.69	303	

Table 14: Reserve summary for Bald Hill (McCrae, 2016) at 31 March 2016. Note that Reserves are exclusive of Resources.

These Reserves are exclusive of Resources.

AM&A have verified that these reserve estimates are reasonable and properly consider all the Modifying Factors as required by the JORC Code (2012).

Mining Methods

To date all the hard rock mining at Bald Hill has all been by conventional open cut methods producing approximately 1.35 million tonnes of pegmatite ore from six pits. All but three of these pits; Boreline, South and Hillview, have been backfilled with mining overburden and tailings.

It is envisaged that all new reserves will be similarly mined by open cut. All the mining overburden from any new excavations and tailings from the processing plant will be stored as either approved surface dumps or as backfill in abandoned pits.

Recovery Methods

The existing processing plant previously operated by Haddington has been re-furbished and upgraded by the Company and successfully commissioned during late 2015 and early 2016. This plant screens, pulverises and then, using a bank of spirals, separates out the heavy minerals; including tantalite and cassiterite, to produce a primary concentrate, Figure 17. This primary concentrate is then sent to the Secondary Beneficiation Plant to be further processed to produce a saleable 25-30% final concentrate, Figure 17. The secondary beneficiation separation plant was initially operating in Perth by Nagrom & Co where it was used to beneficiate the Haddington concentrate. The Company originally located this plant at Boulder but, to overcome problems with water availability and material transport, moved this plant and equipment to the Bald Hill site during June-July 2016.

The final concentrates are planned to be sold to customers for further processing to produce pure products that will then be sold to the end users.



Figure 16: Photos of processing plant at Bald Hill.

Only partial historic production records from the Haddington mining and processing operations, are available. Production records from July 2002 (approximately one year after mining commenced) until November 2005 (when the processing plant ceased operating) provided to the CP by the Company indicate that 1,135,000 tonnes of ore was processed by Haddington at an average head grade of 426ppm Ta_2O_5 .

From this ore 3,264 tonnes of concentrate averaging 94,900 ppm (9.49%) Ta_2O_5 was sold to Greenbushes indicating that 64.3% of the Ta_2O_5 in the ore was recovered in the concentrate with the remaining 35.7% of the Ta_2O_5 lost in the tailings at an average grade of 153 ppm Ta_2O_5 . It is not known for certain the source pit of this ore processed, or its degree of weathering, however it is most likely to have been sourced from all the pits from almost entirely within the fresh zone.

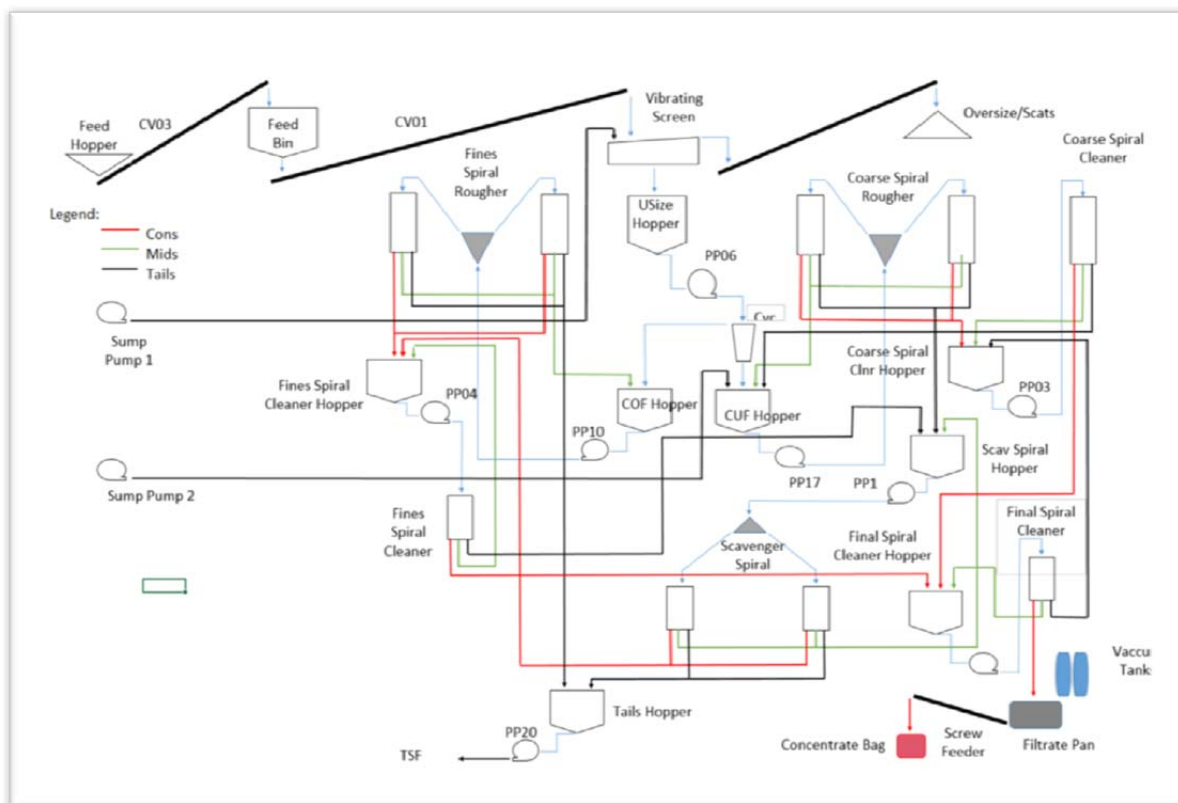


Figure 17: Bald Hill primary circuit process flow-sheet.

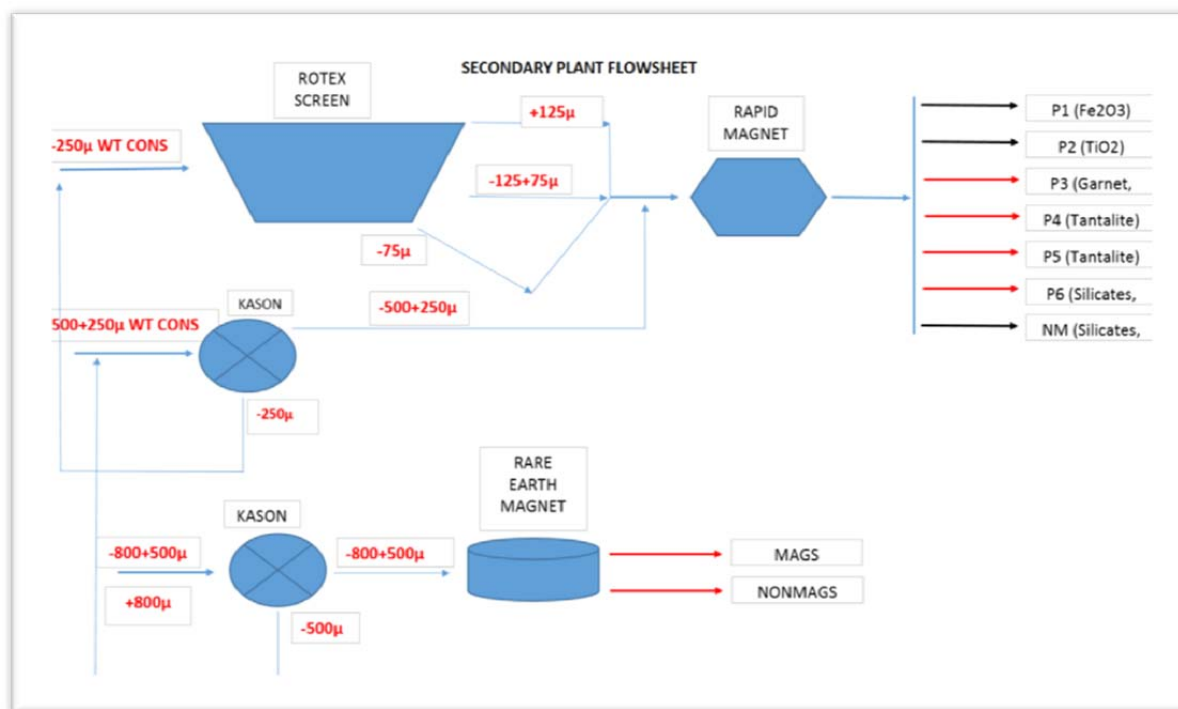


Figure 18: Bald Hill secondary circuit process flow-sheet.

Environmental Studies, Permitting and Social or Community Impact

The W.A. Department of Mines and Petroleum (DMP) promotes best environmental management practices by delivering environmental regulatory and policy services to maximise the responsible development of the State's mineral resources.

The DMP Environment Division assesses mineral exploration and development applications made within Western Australia and audits and inspects mineral activities to ensure their operation is consistent with the principles of responsible and ecologically sustainable exploration and development.

Environmental approvals are granted in accordance with the Mining Act 1978 (WA).

Clearing permits are granted under delegation from the Department of Environment Regulation in accordance with the provisions of the Environmental Protection Act 1986 and the Environmental Protection (Clearing of Native Vegetation) Regulations 2004.

Environmental approvals are required before mining and mineral processing commences, including a mine closure plan, with detailed progress reports required to be submitted annually by the Company to the DMP.

The Company has gained the following environmental approvals for mining and processing:

- Mining approvals for Boreline pits

- Safety management systems
- Environmental management systems
- Storage of explosives
- Radiation registration for concentrate production, transport and storage
- Statutory appointments
- Native Title agreements

And the company has applied for the following permits and approvals which are pending:

- Mining approvals for central pits
- Tailings disposal

Mining approvals

Open pit designs have been completed for Boreline and Central deposits. Mining approval has been gained for the Boreline pits and is being assessed for the Central pits.

Safety management systems

Safety management systems are in place and all statutory approvals have been obtained.

Environmental management systems

Environmental Management systems are in place and have successfully passed the first audit.

Tailings disposal

It is planned to dispose of all tailings in completed open pits. Since the pits will be sequentially mined there will be sufficient storage capacity at any time, starting with the already completed Boreline pit. Environmental approval for in pit tailings is currently being assessed

Storage of explosives

Explosive storage is not required at this stage but a licence has been obtained.

Radiation registration for concentrate transport and storage

Bald Hill benefaction plant has achieved radiation registration. Radiation management plans have been approved and radiation safety officer appointed.

Statutory appointments

All necessary statutory appointments have been made, this includes such positions as:

- Registered manager
- Radiation safety officer
- Electrical supervisor.

Native Title agreements

Agreements with the registered Native Title applicants, the Ngaju people, are required prior to mining or disturbing the land for exploration outside the main mining lease, M15/400. Negotiations are continuing and resolutions to outstanding issues are expected soon.

Capital and Operating Costs

Mining of the Boreline Oxide pit during April/May 2015 and processing the mined ore during the commissioning of the Bald Hill processing plants have provided actual mining and processing plant operating costs in addition to mining recoveries and dilution factors and process plant recoveries.

The Company estimates that operating costs based on extensive use of contractors, particularly for mining and transport services, are approximately A\$45 per tonne of ore processed.

Economic Analysis

The price for Tantalite ore has fluctuated considerably during the last few years averaging just over US\$100/lb since early 2012, Figure 19. Prior to 2012 the price was much steadier at about US\$40/lb. The marked price increase in early 2012 was due to sudden increased demand in the electronics industry and reduced supply from traditional suppliers, mainly in Australia, as reserves were depleted.

The price the Company will receive for its tantalite concentrate will depend on several factors including both the Ta grade of the concentrate and physical and chemical characteristics of its contained tantalite. The concentrate will contain impurities that will dilute the tantalite content and the Ta content of the mineral tantalite varies depending on its chemical composition. The mineral tantalite $(\text{Fe,Mn})(\text{Ta,Nb})_2\text{O}_6$ has a Ta content of between 52-86% Ta_2O_5 depending mainly on its Nb (niobium) content which is in solid solution with Ta.

Other factors that could affect the price received for the Company's concentrate, due to possible problems for the refinery producing pure products from the concentrate, include:

- levels of deleterious elements in the concentrate such as uranium, thorium, arsenic and antimony;
- the presence of nuisance minerals like clay;
- and the size of the tantalite grains.

Historically the concentrate produced by Haddington at the Bald Hill Mine site was a high quality concentrate with very low levels of uranium, thorium, arsenic and antimony as well as clay so it was sold at a premium price to Greenbushes Limited so it could be blended with poorer quality, inferior concentrates from other sources to produce a smelter feed that had acceptable smelting properties.



Figure 19: Tantalite market price since January 7 2011 to 31 March 2016 (after InfoMine).

The price for lithium carbonate has recently risen considerably to above \$US21,000 per tonne, more than trebling in price since late 2015, Figure 20. This rapid price increase was possibly due to sudden increased demand in the electronics industry for battery manufacture along with probable market speculation.

As indicated previously in the geology section of this report the pegmatites at Bald Hill contain significant amounts of spodumene, a lithium bearing mineral and the Company is investigating the feasibility of recovering spodumene contained in the tailings discarded by the previous mining operators and any pegmatite ore to be mined in future. The Company has also signed a Binding Terms Sheet in relation to, *inter alia*, a joint venture deal with Lithco No. 2 Pty Ltd to, *inter alia*, explore for lithium on the Company's leases.

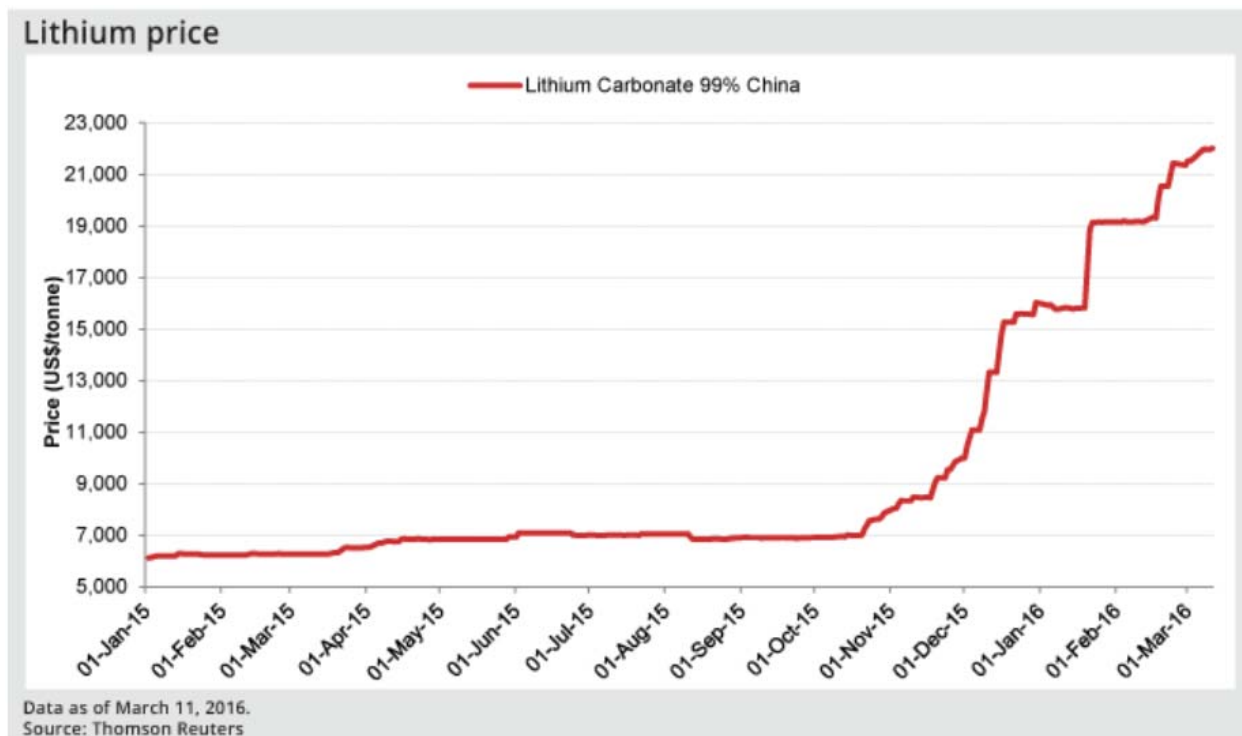


Figure 20: Lithium Carbonate market price since January 1, 2015 to March 1, 2016 (after Thomson Reuters).

Other Relevant Data and Information

There is no other data not included in this report and known to AM&A that would assist with the understanding of the Bald Hill project.

Interpretation and Conclusions

The general geology of the Property is reasonably well-understood. It is comprised of a series of pegmatitic sheets and veins intruded into an Achaean metasediment sequence. These sheets and veins are developed along a roughly north–south trend, and vary in geometry, extent, and dip, both to the west and east. The pegmatites contain tantalite, spodumene, columbite, cassiterite and others as accessory minerals, although their regional distribution is less well-understood.

Exploration has focused on identifying near-surface pegmatites, by costeaning and shallow drilling, supplemented by some geophysics. The drilling methods used included RAB, RC, and minor diamond coring. The sampling was predominantly 1.0 m in length. The data generated has been captured in a number of databases, spreadsheets, other files, and documents, and has, in part, been validated by AMC Consultants and Varley. Overall, the exploration approach has been conducted in line with general industry practices of the time.

AMC Consultants estimated that the Bald Hill tantalum project Mineral Resource as of 31 March 2014 comprises 2.58 Mt averaging 352 ppm Ta₂O₅ at a lower cut-off of 100 ppm Ta₂O₅. Most of this resource is located in the Central Mine Area adjacent to the five open pits that have been subject to previous mining with additional resources located at both Boreline and Creekside.

Most of the AMC resource estimate was categorised as Indicated Mineral Resource. No Measured Mineral Resource has been determined, primarily because of the uncertainties associated with database integrity, a lack of understanding of the detailed controls on tantalum mineralisation and the paucity of bulk density data.

AMAL completed further RC drilling at the Boreline, Far South and North Extended deposits with much of this drilling extending the resources modelled by AMC. Ray Varley of GRM used this new drilling data to estimate resources of 0.54 Mt averaging 311 ppm Ta₂O₅ at a lower cut-off of 160 ppm Ta₂O₅.

The current total resource estimate at Bald Hill stands at 1.7 Mt at 326 ppm Ta₂O₅ of which 0.65 Mt at 306ppm Ta₂O₅ is Indicated and approximately 1.1 Mt at 339ppm Ta₂O₅ is Inferred.

AMAL commissioned a reserve estimate and pit design by Gary McCrae of Minecomp Pty Ltd, for the Boreline and Central deposits. Gary McCrae is a Mining Engineer and a full time employee of Minecomp Pty Ltd and who is a member of the Australasian Institute of Mining and Metallurgy. McCrae estimated a Probable Reserve of 1.69 Mt at an average grade of 303 ppm Ta₂O₅. This reserve excludes reserves mined by AMAL in a small open pit at Boreline during April/May 2015 and the mined ore that was used to commission the Bald Hill processing plant.

AM&A concludes that there are sufficient resources at a sufficient grade to warrant the Company's planned full scale mining and production of high quality tantalite concentrates subject to obtaining all requisite approvals.

AM&A considers that there is potential to increase the Mineral Resource, and consequently the Ore Reserves, because there are several prospects that have been previously drill tested and shown to host significant tantalum and lithium mineralisation. Additionally, there are a number of prospects where surface sampling has identified tantalum and lithium mineralisation that require further exploration.

Risks

The following risk analysis has been adopted by the Competent Person in assigning risk factors to various aspects. Risk has been classified from major to minor as follows:

Major Risk: the factor poses an immediate danger of a failure which, if uncorrected, will have a material effect (>15% to 20%) on the project cash flow and performance and could potentially lead to project failure.

Moderate Risk: the factor, if uncorrected, could have a significant effect (10% to 15%) on the project cash flow and performance unless mitigated by some corrective action.

Minor Risk: the factor, if uncorrected, will have little or no effect (<10%) on project cash flow and performance.

Overall Risks

The likelihood of a risk event occurring within a nominal 7 year time frame has been considered as:

Likely: will probably occur

Possible: may occur

Unlikely: unlikely to occur

The degree or consequence of a risk and its likelihood are combined into an overall risk assessment, as shown below:

Likelihood of Risk (within 7 years)	Consequence of Risk		
	Minor	Moderate	Major
Likely	Medium	High	High
Possible	Low	Medium	High
Unlikely	Low	Low	Medium

Table 15: Risk Assessment Guidelines.

Project Risks

This Section identifies the areas that Competent Person regards as the major risks associated with an investment in the Bald Hill project.

The main risks pertaining to this project are as follows:

- Resource risk due to changes in geological interpretation, assumed mining and processing parameters and new geological information and or sampling data;
- Commodity prices and exchange rates are constantly changing;
- Risks inherent in exploration and mining include, among other things, successful exploration and identification of ore reserves, satisfactory performance of mining operations if a mineable deposit is discovered and competent management;
- Risks associated with obtaining renewal of tenements upon expiry of their current term, including the grant of subsequent titles where applied for over the same ground. The grant or refusal of tenements is subject to ministerial discretion and there is no certainty that the renewal of tenements will be granted.
- The risk of material adverse changes in the government policies or legislation of Western Australia that may affect the level and practicality of mining activities;
- Environmental management issues with which the Company may be required to comply from time to time. There are very substantive legislative and regulatory regimes with which the Company needs to comply for land access and mining which can lead to significant delays.
- Native Title is believed to be extinguished over the mining leases. The status of Native Title over the other leases and licences that make up the Company's tenement package has not been determined by the CP as they do not cover the reported resource and planned mining areas.
- Poor weather conditions over a prolonged period which might adversely affect mining and exploration activities and the timing of earning revenues;
- Unforeseen major failures, breakdowns or repairs required to key items of mining and processing equipment, mining plant and equipment or mine structure resulting in significant delays, notwithstanding regular programs of repair, maintenance and upkeep;

This is not an exhaustive list. Further clarification of the major risks follow:-

Resource

Estimates of Mineral Resources may change when new information becomes available or new modifying factors arise. Interpretations and assumptions on the geology and controls on the mineralisation on which Resource or Reserve estimates based on may be found to be inaccurate after further mapping, drilling and sampling or through future production. Any adjustment could affect the development and mining plans, which could materially and adversely affect the potential revenue from the Project and the valuation of the Project. If the Resources are over estimated in either quantity or quality of ore, the profitability of the project will be adversely affected. If however the quantity or quality is underestimated the profitability of the project will be enhanced. The Bald Hill Project is in the pre-full scale mining and mineral processing production stage. Mineral value fluctuations, dilution, grade and mining losses all could potentially change the value of the Resource estimate.

Mining Risk

Mining risks include the uncertainties associated with projected continuity of an ore deposit, fluctuations in grades and values of the product being mined, and unforeseen operational and technical problems.

Mining may be adversely affected or hampered by a variety of non-technical issues such as limitations on activities due to seasonal changes, industrial disputes, land claims, legal challenges associated with land ownership, environmental matters, mining legislation and many other factors beyond the control of the Company, including many that are partly or wholly unforeseeable.

The cost of maintaining mining properties which depends on the Company having access to sufficient development capital, poses another form of risk.

Changes in the Western Australia mining law and regulations may affect the feasibility and profitability of any mining operations.

Commodity Price and Demand, and Exchange Rates

The Company's project is prospective for mainly Tantalite (tantalum) but also Spodumene (lithium) and Cassiterite (tin) and various other minerals as perceived by the Company. Therefore it would be reasonable to expect that the Company's market appeal, and in the event it commences mining any of the other commodities besides tantalite, its revenue will be affected by the price of such minerals. Mineral and metal prices may fluctuate widely and are affected by numerous industry factors beyond the Company's control.

General Economic Factors and Investment Risks

General economic conditions may affect inflation and interest rates, which in turn may impact upon the Company's operating costs and financing. Other factors that may adversely affect the Company's activities in Western Australia include changes in government policies, natural disasters, industrial disputes, and social unrest. Some of these risks include:

Currency Exchange Rate Fluctuations

Fluctuations in currency exchange rates can affect the value of operating and capital costs as well as the price received for any concentrates sold.

Taxation

Changes to tax legislation and regulation or their interpretation may affect the value of mine output.

Unforeseeable Risks

There are likely to be risks that AM&A are unaware of or do not fully appreciate at any point in time. Over time or with the benefit of hindsight these sometimes become apparent. Such risks may be related to legislation, regulation, business conditions, land access, conflicts and disputes at a local or international level, data issues and a variety of other unforeseen eventualities.

A summary of the main Project risks are included, summarized and ranked by their importance as follows in Table 16.

Risk Issue Likelihood Consequence	Likelihood	Consequence Rating	Risk
Geological			
Resource tonnes and grades significantly not achieved beyond the limits implied by the JORC resource classifications	Possible	Major	Medium
Economic Conditions			
Commodity Price	Possible	Moderate	Medium
Loss of Demand	Unlikely	Major	Medium
Inflation Increase	Possible	Moderate	Medium
Change in Interest Rate	Possible	Moderate	Medium
Sovereign Risk	Possible	Moderate	Medium
Environmental			
Unexpected Unauthorised Ecological Damage	Unlikely	Moderate	Low
Extra costs in environment restoration	Possible	Minor	Low
Contamination of Local Water System	Possible	Minor	Low
Capital and Operating Costs			
Capital Costs	N/A	N/A	N/A
Operational Risk			
Operating Costs	Possible	High	Medium

Table 16: Summary of Main Project Risks.

Recommendations

The following recommendations are made with respect to further evaluating and increasing confidence in the project:

- Further RC and diamond drilling is warranted at the various deposits to explore for additional resources and improve the understanding of the current resources prior to mining.
- A systematic program of inclined 50 m deep RAB drilling is recommended along lines across the known geochemical anomalies on the tenements immediately surrounding the main mining licence M15/400, to test for thicknesses and grades of known outcropping pegmatites as well as to test for pegmatites not outcropping in areas of deep eluvial and alluvial cover.
- A systematic soil sampling program, on appropriate grid spacings governed by the regional geology, is recommended on the Company's tenements distant from M15/400 to test for geochemical anomalism. These samples should be analysed for lithium as it is an excellent pathfinder element with a wide dispersion halo surrounding mineralised pegmatites. Any geochemical haloes found by the soil sampling can then be followed up with RAB drilling to test for pegmatites.
- All pegmatites found by the first phase reconnaissance RAB drilling should be followed up by RC drilling on an appropriate grid spacing to delimit potential resources.
- Further determinations of bulk density are required to establish higher confidence in grade, metal, and tonnage calculations that feed into future mine production. The determinations can be performed on exposed pegmatite and host rocks in pits, or from diamond core.
- As with previous mining by Haddington, blasthole sampling should be continued to understand the grade variability within each pegmatite, and to assist with blending strategies that would assist with maximising the recovery of the target minerals. These blastholes should be geologically logged to assist with the mine planning and scheduling process. The collected data should be captured and maintained in its own database, contributing to future mineral resource and ore reserve estimates.

Competent Person statement

AM&A Competent Person for Mineral Resources: Mr Allen J. Maynard

I Allen J. Maynard, confirm that I am the Principal of Al Maynard & Associates Pty Ltd (AM&A) and that I directly supervised the production of the report titled "Independent Qualified Person's Report of the Bald Hill Tantalum Project, Western Australia" with an effective date of 31 March 2016, in accordance with SGX Catalist Rule 442.

I confirm that my firm's partners, directors, substantial shareholders and their associates and I are independent of Alliance Mineral Assets Limited (the Company), its directors, and substantial shareholders. In addition, my firm's partners, directors, substantial shareholders and their associates and I have no interest, direct or indirect, in the Company and will not receive benefits other than remuneration paid to AM&A in connection with the independent qualified persons report (IQPR). Remuneration paid to AM&A in connection with the IQPR is not dependent on the findings of this report.

I have read and understood the requirements of the 2012 edition of the Australasian Code for Reporting of Exploration Results, Mineral Resources and Ore Reserves (JORC Code, 2012 Edition).

I am a Competent Person as defined by the JORC Code, 2012 Edition, having greater than five years' experience that is relevant to the style of mineralisation and type of deposit described in this report, and to the activity for which I am accepting responsibility.

I verify that this report is based on and fairly and accurately reflects, in the form and context in which it appears, the information in my supporting documentation relating to Exploration Results and Mineral Resources.

I am a Member of The Australian Institute of Geoscientists and The Australasian Institute of Mining and Metallurgy in good standing. I have not been found in breach of any relevant rule or law and is not denied or disqualified from membership of, subject to any sanction imposed, the subject of any disciplinary proceedings or the subject of any investigation which might lead to a disciplinary action by any regulatory authority or any professional association.

I have reviewed the report to which this Consent Statement applies.



(Signed)

12th August, 2016

Allen J. Maynard- Competent Person

References

- Altura Mining Limited, June 2010. Annual Environmental Report Bald Hill Tantalite Project for period April 1 2009 to March 31 2010. Submitted to DMP 23 June 2010.
- Cooper and Associates, February 2001. Bald Hill Tantalum Project Tailings Storage Notice of Intent. Prepared for Haddington Resources Limited.
- Cooper and Associates, July 2001. Bald Hill Tantalum Project Tailings Storage Operating Manual. Prepared for Haddington Resources Limited.
- D E Cooper & Associates, August 2002. Bald Hill Tantalum Project In-Pit Tailings Storage Notice of Intent. Prepared for Haddington International Resources Limited.
- Griffin, TJ, 1989, Widgiemooltha Western Australia, Sheet SH 51-14 International Index, 1 :250 000 Geological Series-Explanatory Notes, Second Edition, 43p.
- Haddington Resources Limited, October 2000. Notice of Intent: Bald Hill Tantalite Project.
- Hall, CE, and Jones, SA, 2008, Geology of the Yardina 1:100 000 sheet: Geological Survey of Western Australia, 1:100 000 Geological Series Explanatory Notes, 41p.
- Hetherington Exploration & Mining Title Services Pty Ltd, April 2011. Report on the tenements of the Bald Hill Tantalite Project. Prepared for HRM Resources Australia Limited.
- Maynard, A.J. 2009. Independent geological report on the Mineral Resources and Exploration Assets of HRM Resources. Prepared for HRM Resources Australia Limited
- McCrae, G, June 2016, Central Zone Open Pit and Open Pit Cutback Design, June 2016, Summary Report, Prepared for Alliance Mineral Assets Limited, Minecomp Pty Ltd
- McCrae, G, July 2016, Boreline and Boreline Extended Open Pit and Open Pit Cutback Design, June 2016, Summary Report, Prepared for Alliance Mineral Assets Limited, Minecomp Pty Ltd
- Newby, K R and Hnatiuk, R J, 1984. Vegetation and Flora in the Biological Survey of the Eastern Goldfields of Western Australia, Part 2. Widgiemooltha – Zanthus Area. Record of the WA Museum, Supplement 18.
- O'Connor R, March 2005. Report on an Ethnographic Survey of E15/798. Prepared for Haddington Resources Limited.
- O'Connor R, February 2006. Report on an Ethnographic Survey of two proposed exploration areas on Binneringie Station. Prepared for Haddington Resources Limited.
- Painter, MGM, and Groenewald, PB, 2001, Geology of the Mount Belches 1:100 000 sheet: Western Australia Geological Survey, 1:100 000 Geological Series Explanatory Notes, 38p.
- Varley, R., 2015: Bald Hill Tantalum Deposit Bald Hill near Widgiemooltha Western Australia, Boreline Area July - August 2014 Drilling M15/400 March 2015 Resource Estimate, Unpub.

Varley, R., 2015: Bald Hill Tantalum Deposit Bald Hill near Widgiemooltha Western Australia, North Pit Extended and Far South November 2014 Drilling M15/400 February 2015 Resource Estimate, Unpub.

World Wide Web

Geoscience Australia

<http://www.australianminesatlas.gov.au/aimr/commodity/tantalum.html>

InfoMine

<http://www.infomine.com/investment/metal-prices/tantalite-ore/>

Wikipedia

<http://en.wikipedia.org/wiki/Tantalite>

<http://en.wikipedia.org/wiki/Tantalum>

<http://en.wikipedia.org/wiki/Tin>

<http://en.wikipedia.org/wiki/Lithium>

<http://en.wikipedia.org/wiki/Kalgoorlie>

Lithium Price data

<https://www.snl.com/InteractiveX/Article.aspx?cdid=A-35639305-11568&sf22963269=1>

JORC Code, 2012 Edition – Table 1, Bald Hill Boreline Resource. – (After Varley)

Section 1 Sampling Techniques and Data

(Criteria in this section apply to all succeeding sections.)

Criteria	JORC Code explanation	Commentary
Sampling techniques	<ul style="list-style-type: none"> Nature and quality of sampling (eg cut channels, random chips, or specific specialised industry standard measurement tools appropriate to the minerals under investigation, such as down hole gamma sondes, or handheld XRF instruments, etc). These examples should not be taken as limiting the broad meaning of sampling. Include reference to measures taken to ensure sample representivity and the appropriate calibration of any measurement tools or systems used. Aspects of the determination of mineralisation that are Material to the Public Report. In cases where 'industry standard' work has been done this would be relatively simple (eg 'reverse circulation drilling was used to obtain 1 m samples from which 3 kg was pulverised to produce a 30 g charge for fire assay'). In other cases more explanation may be required, such as where there is coarse gold that has inherent sampling problems. Unusual commodities or mineralisation types (eg submarine nodules) may warrant disclosure of detailed information. 	1983 – 1988
		<ul style="list-style-type: none"> Surveying, mapping & analysis of costeans, RC, RAB drillholes. Costeans sampled along walls. 2-3kg drill samples collected at 1m intervals. Samples jaw crushed and riffle split to 100-150g for pulverizing by roll milling and ring grinding. XRF determination of Ta₂O₅, Nb₂O₅ & Sn by SGS Australia Pty. No evidence of certified standards or blanks. Field duplicates submitted at 1 in 25 in drilling & 1 in 10 costeaning. Assays greater than 800ppm Ta₂O₅ repeated by laboratory. Check assays completed at Greenbushes Analytical Laboratories 1996-1999.
		2000 - 2009
		<ul style="list-style-type: none"> RC & RAB samples collected at 1m intervals in intersected pegmatites. Samples riffle split to two 2.5kg samples pulverized and analysis at laboratory as duplicates. Average of assays in database. Field duplicates added to end of 2004 drilling. Certified blanks and standards of appropriate Ta₂O₅ grade reported in laboratory results. Repeat analyses on approximately 10% of samples 2001-2013.
		2014
		<ul style="list-style-type: none"> RC samples at 1m intervals. Samples split to 3-4kg pulverized and analysis at laboratory. Standards of appropriate grade & lab repeats reported in laboratory results. Field duplicates taken & submitted for analysis at 1 in 10 in drilling.

Criteria	JORC Code explanation	Commentary
Drilling techniques	<ul style="list-style-type: none"> Drill type (eg core, reverse circulation, open-hole hammer, rotary air blast, auger, Bangka, sonic, etc) and details (eg core diameter, triple or standard tube, depth of diamond tails, face-sampling bit or other type, whether core is oriented and if so, by what method, etc). 	<ul style="list-style-type: none"> RC and RAB drilling conducted in line with general industry standards. Most drilling is vertical.
Drill sample recovery	<ul style="list-style-type: none"> Method of recording and assessing core and chip sample recoveries and results assessed. Measures taken to maximise sample recovery and ensure representative nature of the samples. Whether a relationship exists between sample recovery and grade and whether sample bias may have occurred due to preferential loss/gain of fine/coarse material. 	<ul style="list-style-type: none"> Chip recovery or weights for RC and RAB drilling were not conducted. Not possible to establish if relationship between sample recovery and sample grades exists. Tantalite is relatively fine-grained. Opportunity for sample bias is considered negligible.
Logging	<ul style="list-style-type: none"> Whether core and chip samples have been geologically and geotechnically logged to a level of detail to support appropriate Mineral Resource estimation, mining studies and metallurgical studies. Whether logging is qualitative or quantitative in nature. Core (or costean, channel, etc) photography. The total length and percentage of the relevant intersections logged. 	<ul style="list-style-type: none"> Geological logs exist for all drillholes with lithological codes via an established reference legend. Drillholes have been geologically logged in their entirety but assays have generally only been submitted through and adjacent to the pegmatites.
Sub-sampling techniques and sample preparation	<ul style="list-style-type: none"> If core, whether cut or sawn and whether quarter, half or all core taken. If non-core, whether riffled, tube sampled, rotary split, etc and whether sampled wet or dry. For all sample types, the nature, quality and appropriateness of the sample preparation technique. Quality control procedures adopted for all sub-sampling stages to maximise representivity of samples. Measures taken to ensure that the sampling is representative of the in situ material collected, including for instance results for field duplicate/second-half sampling. Whether sample sizes are appropriate to the grain size of the material being sampled. 	<ul style="list-style-type: none"> RC samples were collected at 1m intervals and riffle split on-site to produce a subsample less than 5kg. The RC drilling samples are considered robust for sampling the tantalite mineralisation. It appears most samples were dry. Sampling is in line with general sampling practices of that time. Field duplicates, laboratory standards and laboratory repeats were used to monitor analyses. Sample size for RC drilling is considered appropriate for the tantalite mineralization.
Quality of assay data and laboratory tests	<ul style="list-style-type: none"> The nature, quality and appropriateness of the assaying and laboratory procedures used and whether the technique is considered partial or total. For geophysical tools, spectrometers, handheld XRF instruments, etc, the parameters used in determining the analysis including instrument make and model, reading times, calibrations factors applied and their derivation, etc. Nature of quality control procedures adopted (eg standards, blanks, duplicates, external laboratory checks) and whether acceptable levels of accuracy (ie lack of bias) and precision have been established. 	<ul style="list-style-type: none"> The XRF assay technique is considered to be robust. Standards, blanks and duplicates were submitted in varying frequency throughout the exploration campaigns. Bald Hill operated as a producing mine until 2006, during which verification of assay results from drilling was conducted. No geophysical methods were used to determine assay results.
Verification of sampling and assaying	<ul style="list-style-type: none"> The verification of significant intersections by either independent or alternative company personnel. The use of twinned holes. Documentation of primary data, data entry procedures, data verification, data 	<ul style="list-style-type: none"> The correlations made between closely spaced holes is considered reasonable. The Ta₂O₅ assays show a marked correlation with the pegmatite

Criteria	JORC Code explanation	Commentary
	<p><i>storage (physical and electronic) protocols.</i></p> <ul style="list-style-type: none"> <i>Discuss any adjustment to assay data.</i> 	<p>intersections via elevated downhole grades.</p> <ul style="list-style-type: none"> Drill logs exist for all holes either as electronic files or hardcopy. All drilling data has been loaded to a database and rigorously validated prior to use. Graphical verification was made to see that elevated Ta₂O₅ assays correlated with the assigned downhole lithology.
<i>Location of data points</i>	<ul style="list-style-type: none"> <i>Accuracy and quality of surveys used to locate drillholes (collar and down-hole surveys), trenches, mine workings and other locations used in Mineral Resource estimation.</i> <i>Specification of the grid system used.</i> <i>Quality and adequacy of topographic control.</i> 	<ul style="list-style-type: none"> Collar coordinates were derived from a 1983 50m by 50m local grid. This was resurveyed in 1996. The drilling coordinates prior to 2014 have been transformed to produce GDA94 coordinates. Current drilling is surveyed via a Differential GPS to produce GDA94 coordinates. The area is of low relief and topographic control is of reasonable accuracy.
<i>Data spacing and distribution</i>	<ul style="list-style-type: none"> <i>Data spacing for reporting of Exploration Results.</i> <i>Whether the data spacing and distribution is sufficient to establish the degree of geological and grade continuity appropriate for the Mineral Resource and Ore Reserve estimation procedure(s) and classifications applied.</i> <i>Whether sample compositing has been applied.</i> 	<ul style="list-style-type: none"> Boreline Area. The majority of the drillholes are nominally spaced at 20m by 20m on a rectangular grid rotated approximately 35deg to the east. Some of the holes prior to 2014 are closer spaced. The spacing of holes is considered adequate for the Mineral Resource estimation and classification. There is no evidence of sample compositing.
<i>Orientation of data in relation to geological structure</i>	<ul style="list-style-type: none"> <i>Whether the orientation of sampling achieves unbiased sampling of possible structures and the extent to which this is known, considering the deposit type.</i> <i>If the relationship between the drilling orientation and the orientation of key mineralised structures is considered to have introduced a sampling bias, this should be assessed and reported if material.</i> 	<ul style="list-style-type: none"> The majority of drilling is vertical. The tantalite-bearing pegmatites are generally flat to shallowly dipping in nature. Therefore, the majority of drilling intercepts are assumed to be only marginally greater than true width, with minimal opportunity for sample bias.
<i>Sample security</i>	<ul style="list-style-type: none"> <i>The measures taken to ensure sample security.</i> 	<ul style="list-style-type: none"> The procedures applied were aligned to the industry practices prevailing at the time of sample collection, despatch, and analysis. Given the relative grade and value of the commodity, the procedures are considered to be adequate.
<i>Audits or reviews</i>	<ul style="list-style-type: none"> <i>The results of any audits or reviews of sampling techniques and data.</i> 	<ul style="list-style-type: none"> Prior to 1989 Fugro Spatial Solutions Pty Ltd were commissioned to confirm collar locations of a selected number of drillholes.

Section 2 Reporting of Exploration Results

(Criteria listed in the preceding section also apply to this section.)

Criteria	JORC Code explanation	Commentary
<i>Mineral tenement and land tenure status</i>	<ul style="list-style-type: none"> Type, reference name/number, location and ownership including agreements or material issues with third parties such as joint ventures, partnerships, overriding royalties, native title interests, historical sites, wilderness or national park and environmental settings. The security of the tenure held at the time of reporting along with any known impediments to obtaining a licence to operate in the area. 	<ul style="list-style-type: none"> The portfolio of mineral tenements, comprising mining leases, exploration licences, prospecting licences, miscellaneous licences, a general-purpose lease, and a retention lease are in good standing.
<i>Exploration done by other parties</i>	<ul style="list-style-type: none"> Acknowledgment and appraisal of exploration by other parties. 	<ul style="list-style-type: none"> Alluvial tantalite has been mined periodically from the early 1970s. Gwalia Consolidated Limited undertook exploration for tantalite-bearing pegmatites from 1983-1998. Work included mapping, costeaning, and several phases of drilling using RAB, RC, and diamond methods. The work identified mineral resources that were considered uneconomic at the time. Haddington entered agreement to develop the resource and mining commenced in 2001 and continued until 2005. Haddington continued with exploration until 2009. Living Waters acquired the project in 2009 and continued with limited exploration to the north of the main pit area.
<i>Geology</i>	<ul style="list-style-type: none"> Deposit type, geological setting and style of mineralisation. 	<ul style="list-style-type: none"> The Bald Hill area is underlain by generally north-striking, steeply dipping Archaean metasediments (schists and greywackes) and granitoids. Felsic porphyries and pegmatite sheets and veins have intruded the Archaean rocks. Generally, the pegmatites parallel the regional foliation, occurring as gently dipping sheets and as steeply dipping veins. The pegmatites vary in width and are generally comprised quartz-albite-orthoclase-muscovite-spodumene in varying amounts. Late-stage albitisation in the central part of the main outcrop area has resulted in fine-grained, banded, sugary pegmatites with visible fine-grained, disseminated tantalite. A thin hornfels characterised by needle hornblende crystals is often observed in adjacent country rocks to the pegmatitic intrusives. Tantalite generally occurs as fine disseminated crystals commonly associated with fine-grained albite zones, or as coarse crystals associated with cleavelandite.

Criteria	JORC Code explanation	Commentary
		<ul style="list-style-type: none"> Weathering of the pegmatites yields secondary mineralised accumulations in alluvial/eluvial deposits.
Drillhole Information	<ul style="list-style-type: none"> A summary of all information material to the understanding of the exploration results including a tabulation of the following information for all Material drillholes: <ul style="list-style-type: none"> easting and northing of the drillhole collar elevation or RL (Reduced Level – elevation above sea level in metres) of the drillhole collar dip and azimuth of the hole down hole length and interception depth hole length. If the exclusion of this information is justified on the basis that the information is not Material and this exclusion does not detract from the understanding of the report, the Competent Person should clearly explain why this is the case. 	<ul style="list-style-type: none"> All drillholes have northing and easting collar coordinates in GDA94. Although most drillholes have a collar elevation (relative to mean sea level), there were 127 drillholes with no collar elevation and a further 74 drillholes where there was mismatch with the topography digital terrain model. The collar elevation for these 201 drillholes were derived from the topography digital terrain model. The majority of drilling is vertical. There are 132 (–60°) angled drillholes in the database. For 38 angled drillholes, the set up survey is duplicated at the bottom of the drillhole. A total of 54 drillholes in the database have no downhole survey and were treated as vertical. For costeans, an azimuth with a zero or small dip is recorded to define their orientation. The orientation and lengths were validated against available maps and electronic data sets. AMC conducted checks of the collar locations, drillhole depths, geological logging, assay results for a portion of the database from reports, and electronic data sets.
Data aggregation methods	<ul style="list-style-type: none"> In reporting Exploration Results, weighting averaging techniques, maximum and/or minimum grade truncations (eg cutting of high grades) and cut-off grades are usually Material and should be stated. Where aggregate intercepts incorporate short lengths of high grade results and longer lengths of low grade results, the procedure used for such aggregation should be stated and some typical examples of such aggregations should be shown in detail. The assumptions used for any reporting of metal equivalent values should be clearly stated. 	<ul style="list-style-type: none"> No aggregated intercepts are reported. Metal equivalents have not been used.
Relationship between mineralisation widths and intercept lengths	<ul style="list-style-type: none"> These relationships are particularly important in the reporting of Exploration Results. If the geometry of the mineralisation with respect to the drillhole angle is known, its nature should be reported. If it is not known and only the down hole lengths are reported, there should be a clear statement to this effect (eg 'down hole length, true width not known'). 	<ul style="list-style-type: none"> The majority of drilling completed at Bald Hill was vertical holes. The tantalite-bearing pegmatites are generally flat to shallowly dipping in nature. Therefore, the majority of drilling intercepts are assumed to be only marginally greater than true width.
Diagrams	<ul style="list-style-type: none"> Appropriate maps and sections (with scales) and tabulations of intercepts should be included for any significant discovery being reported These should include, but not be limited to a plan view of drillhole collar locations and 	<ul style="list-style-type: none"> Drilling locations are shown in the report.

Criteria	JORC Code explanation	Commentary
	<i>appropriate sectional views.</i>	
<i>Balanced reporting</i>	<ul style="list-style-type: none"> Where comprehensive reporting of all Exploration Results is not practicable, representative reporting of both low and high grades and/or widths should be practiced to avoid misleading reporting of Exploration Results. 	<ul style="list-style-type: none"> Not applicable
<i>Other substantive exploration data</i>	<ul style="list-style-type: none"> Other exploration data, if meaningful and material, should be reported including (but not limited to): geological observations; geophysical survey results; geochemical survey results; bulk samples – size and method of treatment; metallurgical test results; bulk density, groundwater, geotechnical and rock characteristics; potential deleterious or contaminating substances. 	<ul style="list-style-type: none"> The water table in the mine site area is at least 15 m below ground surface and confined to steeply dipping, north–south-trending shear zones. Local water bore analyses indicate hypersaline water with total dissolved salts (TDS) >200,000 mg/L and pH 5.8–6.95.
<i>Further work</i>	<ul style="list-style-type: none"> The nature and scale of planned further work (eg tests for lateral extensions or depth extensions or large-scale step-out drilling). Diagrams clearly highlighting the areas of possible extensions, including the main geological interpretations and future drilling areas, provided this information is not commercially sensitive. 	<ul style="list-style-type: none"> Further RC and diamond drilling is warranted at the various deposits to explore for additional resources and improve the understanding of the current resources prior to mining.

Section 3 Estimation and Reporting of Mineral Resources

(Criteria listed in section 1, and where relevant in section 2, also apply to this section.)

Criteria	JORC Code explanation	Commentary
<i>Database integrity</i>	<ul style="list-style-type: none"> Measures taken to ensure that data has not been corrupted by, for example, transcription or keying errors, between its initial collection and its use for Mineral Resource estimation purposes. Data validation procedures used. 	<ul style="list-style-type: none"> Available data have been compiled into a series of Excel spreadsheets for validation purposes. Assay data were checked against original assay sheets where available and, in particular, where the results were considered potentially erroneous. Errors generated due to from-to and assaying or lithology overlap errors were rectified when the data from the Excel spreadsheets was exported into the software used in the estimation.
<i>Site visits</i>	<ul style="list-style-type: none"> Comment on any site visits undertaken by the Competent Person and the outcome of those visits. If no site visits have been undertaken indicate why this is the case. 	<ul style="list-style-type: none"> Al Maynard and Associates (“AM&A”) undertook an initial site visit to the Bald Hill Tantalite Project for AMAL on the 18 February, 2014 and conducted follow up visits on 31 March 2015, 14-18 December 2015 and 18-22 April 2016. A previous field trip to the site area for a separate client was conducted in 2002.
<i>Geological interpretation</i>	<ul style="list-style-type: none"> Confidence in (or conversely, the uncertainty of) the geological interpretation of the mineral deposit. Nature of the data used and of any assumptions made. 	<ul style="list-style-type: none"> Exploration and mining history in the Bald Hill area has shown that tantalite mineralisation is confined to pegmatite intrusions.

Criteria	JORC Code explanation	Commentary
	<ul style="list-style-type: none"> <i>The effect, if any, of alternative interpretations on Mineral Resource estimation.</i> <i>The use of geology in guiding and controlling Mineral Resource estimation.</i> <i>The factors affecting continuity both of grade and geology.</i> 	<ul style="list-style-type: none"> Geological logging and Ta₂O₅ grades have been used to create a series of pegmatite wireframes that constrain the tantalite mineralisation for the purpose of Mineral Resource estimation. The pegmatites are relatively thin with pegmatites greater than 1 m in thickness being considered. The geometry of the pegmatites can change rapidly over short distances and, as such, knowledge of their distribution is critical to a robust estimate.
Dimensions	<ul style="list-style-type: none"> <i>The extent and variability of the Mineral Resource expressed as length (along strike or otherwise), plan width, and depth below surface to the upper and lower limits of the Mineral Resource.</i> 	<ul style="list-style-type: none"> The Boreline Area resource has grid dimensions of approximately 240m north by 350 east and 40m depth from surface.
Estimation and modelling techniques	<ul style="list-style-type: none"> <i>The nature and appropriateness of the estimation technique(s) applied and key assumptions, including treatment of extreme grade values, domaining, interpolation parameters and maximum distance of extrapolation from data points. If a computer assisted estimation method was chosen include a description of computer software and parameters used.</i> <i>The availability of check estimates, previous estimates and/or mine production records and whether the Mineral Resource estimate takes appropriate account of such data.</i> <i>The assumptions made regarding recovery of by-products.</i> <i>Estimation of deleterious elements or other non-grade variables of economic significance (eg sulphur for acid mine drainage characterisation).</i> <i>In the case of block model interpolation, the block size in relation to the average sample spacing and the search employed.</i> <i>Any assumptions behind modelling of selective mining units.</i> <i>Any assumptions about correlation between variables.</i> <i>Description of how the geological interpretation was used to control the resource estimates.</i> <i>Discussion of basis for using or not using grade cutting or capping.</i> <i>The process of validation, the checking process used, the comparison of model data to drillhole data, and use of reconciliation data if available.</i> 	<ul style="list-style-type: none"> Closed wireframes of minimum thickness >1m were constructed according to the geological understanding of the areas and modified so that they contained Ta₂O₅ grades of >= 160 ppm. Lower grades were allowed but only where the grade intercepts averaged >160ppm. Wireframes extended halfway between holes and adjacent sections. 1m sample composites from within the wireframes were used to estimate grades into a block model of 10mY by 10X by 1mZ approximating half the drill spacing and equalling the drillhole sampling. Wireframe percentages were calculated for each block. Block estimates were made (using Gemcom software) for the principal components Ta₂O₅ and Sn using ordinary kriging controlled by anisotropic variogram models (using GeoAccess software) which reflected the overall geology. Other grades for Nb₂O₅, Cs, Li, Rb, U and Th were estimated using inverse distance squared. All estimates used ellipsoid sample searches orientated to the variogram directions. Maximum and minimum samples used for block estimation were chosen to make the average of the estimated blocks and the averaged estimating sample grades as close as possible. Ta₂O₅ and Sn were estimated uncut and top-cut grades. Top-cut grades were decided by inspection of the sample distributions. Other grades were estimated uncut.
Moisture	<ul style="list-style-type: none"> <i>Whether the tonnages are estimated on a dry basis or with natural moisture, and the method of determination of the moisture content.</i> 	<ul style="list-style-type: none"> The density used is considered to be equivalent of a dry in situ bulk density.
Cut-off parameters	<ul style="list-style-type: none"> <i>The basis of the adopted cut-off grade(s) or quality parameters applied.</i> 	<ul style="list-style-type: none"> A cut-off of 160ppm Ta₂O₅ was selected after reviewing previous work suggesting weathering cut-off grades.

Criteria	JORC Code explanation	Commentary
Mining factors or assumptions	<ul style="list-style-type: none"> Assumptions made regarding possible mining methods, minimum mining dimensions and internal (or, if applicable, external) mining dilution. It is always necessary as part of the process of determining reasonable prospects for eventual economic extraction to consider potential mining methods, but the assumptions made regarding mining methods and parameters when estimating Mineral Resources may not always be rigorous. Where this is the case, this should be reported with an explanation of the basis of the mining assumptions made. 	<ul style="list-style-type: none"> It is assumed that selective open-pit mining methods will be applied, similar to those that operated from 2001 to 2005 with a minimum mining thickness greater and 1m.
Metallurgical factors or assumptions	<ul style="list-style-type: none"> The basis for assumptions or predictions regarding metallurgical amenability. It is always necessary as part of the process of determining reasonable prospects for eventual economic extraction to consider potential metallurgical methods, but the assumptions regarding metallurgical treatment processes and parameters made when reporting Mineral Resources may not always be rigorous. Where this is the case, this should be reported with an explanation of the basis of the metallurgical assumptions made. 	<ul style="list-style-type: none"> The extraction method employed previously was successful in extracting the tantalum minerals. It has been proposed that a similar process would be used in the future, and it is assumed it would be also successful in extracting the mineral.
Environmental factors or assumptions	<ul style="list-style-type: none"> Assumptions made regarding possible waste and process residue disposal options. It is always necessary as part of the process of determining reasonable prospects for eventual economic extraction to consider the potential environmental impacts of the mining and processing operation. While at this stage the determination of potential environmental impacts, particularly for a greenfields project, may not always be well advanced, the status of early consideration of these potential environmental impacts should be reported. Where these aspects have not been considered this should be reported with an explanation of the environmental assumptions made. 	<ul style="list-style-type: none"> Previously, the generated waste materials were used to backfill mined-out pits or delivered to a tailings storage facility. For any new operation, it is expected that this approach would again be used.
Bulk density	<ul style="list-style-type: none"> Whether assumed or determined. If assumed, the basis for the assumptions. If determined, the method used, whether wet or dry, the frequency of the measurements, the nature, size and representativeness of the samples. The bulk density for bulk material must have been measured by methods that adequately account for void spaces (vugs, porosity, etc), moisture and differences between rock and alteration zones within the deposit. Discuss assumptions for bulk density estimates used in the evaluation process of the different materials. 	<ul style="list-style-type: none"> Density determinations obtained via weathering profile grab samples indicate average bulk densities of 1.92t/m³ for oxide pegmatite, 2.36t/m³ for transitional pegmatite and 2.63t/m³ for fresh pegmatite.
Classification	<ul style="list-style-type: none"> The basis for the classification of the Mineral Resources into varying confidence categories. Whether appropriate account has been taken of all relevant factors (ie relative confidence in tonnage/grade estimations, reliability of input data, confidence in continuity of geology and metal values, quality, quantity and distribution of the data). Whether the result appropriately reflects the Competent Person's view of the deposit. 	<ul style="list-style-type: none"> The Mineral Resources have been classified by considering the Slope of the Regression (SoR) for each block which has been calculated during kriging. Measured – none due to the large drillhole spacing. Indicated – SoR >0.85. Inferred – SoR =<0.85 and >0.65. Unclassified – SoR =<0.65.

Criteria	JORC Code explanation	Commentary
Audits or reviews	<ul style="list-style-type: none"> The results of any audits or reviews of Mineral Resource estimates. 	<ul style="list-style-type: none"> No audits or reviews have been completed.
Discussion of relative accuracy/ confidence	<ul style="list-style-type: none"> Where appropriate a statement of the relative accuracy and confidence level in the Mineral Resource estimate using an approach or procedure deemed appropriate by the Competent Person. For example, the application of statistical or geostatistical procedures to quantify the relative accuracy of the resource within stated confidence limits, or, if such an approach is not deemed appropriate, a qualitative discussion of the factors that could affect the relative accuracy and confidence of the estimate. The statement should specify whether it relates to global or local estimates, and, if local, state the relevant tonnages, which should be relevant to technical and economic evaluation. Documentation should include assumptions made and the procedures used. These statements of relative accuracy and confidence of the estimate should be compared with production data, where available. 	<ul style="list-style-type: none"> No statistical or geostatistical method was applied. Factors impacting the accuracy and confidence of the Mineral Resources: Accuracy of historical drilling data used within the current drilling areas is unknown. Geological control of the tantalite mineralisation within the pegmatites is not fully understood. Hence at a local scale the spatial continuity and geometry of mineralisation between drillholes cannot be predicted with certainty.

JORC Code, 2012 Edition – Table 1, Central Resources. – (After Varley)

Section 1 Sampling Techniques and Data

(Criteria in this section apply to all succeeding sections.)

Criteria	JORC Code explanation	Commentary
Sampling techniques	<ul style="list-style-type: none"> Nature and quality of sampling (eg cut channels, random chips, or specific specialised industry standard measurement tools appropriate to the minerals under investigation, such as down hole gamma sondes, or handheld XRF instruments, etc). These examples should not be taken as limiting the broad meaning of sampling. Include reference to measures taken to ensure sample representivity and the appropriate calibration of any measurement tools or systems used. Aspects of the determination of mineralisation that are Material to the Public Report. In cases where 'industry standard' work has been done this would be relatively simple (eg 'reverse circulation drilling was used to obtain 1 m samples from which 3 kg was pulverised to produce a 30 g charge for fire assay'). In other cases more explanation may be required, such as where there is coarse gold that has inherent sampling problems. Unusual commodities or mineralisation types (eg submarine nodules) may warrant disclosure of detailed information. 	<p>1983 – 1988</p> <ul style="list-style-type: none"> Surveying, mapping & analysis of costeans, RC, RAB drillholes. Costeans sampled along walls. 2-3kg drill samples collected at 1m intervals. Samples jaw crushed and riffle split to 100-150g for pulverizing by roll milling and ring grinding. XRF determination of Ta₂O₅, Nb₂O₅ & Sn by SGS Australia Pty. No evidence of certified standards or blanks. Field duplicates submitted at 1 in 25 in drilling & 1 in 10 costeaning. Assays greater than 800ppm Ta₂O₅ repeated by laboratory. Check assays completed at Greenbushes Analytical Laboratories 1996-1999. <p>2000 - 2009</p> <ul style="list-style-type: none"> RC & RAB samples collected at 1m intervals in intersected pegmatites. Samples riffle split to two 2.5kg samples pulverized and analysis at laboratory as duplicates. Average of assays in database. Field duplicates added to end of 2004 drilling. Certified blanks and standards of appropriate Ta₂O₅ grade reported in laboratory results. Repeat analyses on approximately 10% of samples 2001-2013. <p>2014</p> <ul style="list-style-type: none"> RC samples at 1m intervals. Samples split to 3-4kg pulverized and analysis at laboratory. Standards of appropriate grade & lab repeats reported in laboratory results. Field duplicates taken & submitted for analysis at 1 in 10 in drilling.
Drilling techniques	<ul style="list-style-type: none"> Drill type (eg core, reverse circulation, open-hole hammer, rotary air blast, auger, Bangka, sonic, etc) and details (eg core diameter, triple or standard tube, depth of diamond tails, face-sampling bit or other type, whether core is oriented and if so, by what method, etc). 	<ul style="list-style-type: none"> RC and RAB drilling conducted in line with general industry standards. Most drilling is vertical.

Criteria	JORC Code explanation	Commentary
Drill sample recovery	<ul style="list-style-type: none"> Method of recording and assessing core and chip sample recoveries and results assessed. Measures taken to maximise sample recovery and ensure representative nature of the samples. Whether a relationship exists between sample recovery and grade and whether sample bias may have occurred due to preferential loss/gain of fine/coarse material. 	<ul style="list-style-type: none"> Chip recovery or weights for RC and RAB drilling were not conducted. Not possible to establish if relationship between sample recovery and sample grades exists. Tantalite is relatively fine-grained. Opportunity for sample bias is considered negligible.
Logging	<ul style="list-style-type: none"> Whether core and chip samples have been geologically and geotechnically logged to a level of detail to support appropriate Mineral Resource estimation, mining studies and metallurgical studies. Whether logging is qualitative or quantitative in nature. Core (or costean, channel, etc) photography. The total length and percentage of the relevant intersections logged. 	<ul style="list-style-type: none"> Geological logs exist for all drillholes with lithological codes via an established reference legend. Drillholes have been geologically logged in their entirety but assays have generally only been submitted through and adjacent to the pegmatites.
Sub-sampling techniques and sample preparation	<ul style="list-style-type: none"> If core, whether cut or sawn and whether quarter, half or all core taken. If non-core, whether riffled, tube sampled, rotary split, etc and whether sampled wet or dry. For all sample types, the nature, quality and appropriateness of the sample preparation technique. Quality control procedures adopted for all sub-sampling stages to maximise representivity of samples. Measures taken to ensure that the sampling is representative of the in situ material collected, including for instance results for field duplicate/second-half sampling. Whether sample sizes are appropriate to the grain size of the material being sampled. 	<ul style="list-style-type: none"> RC samples were collected at 1m intervals and riffle split on-site to produce a subsample less than 5kg. The RC drilling samples are considered robust for sampling the tantalite mineralisation. It appears most samples were dry. Sampling is in line with general sampling practices of that time. Field duplicates, laboratory standards and laboratory repeats were used to monitor analyses. Sample size for RC drilling is considered appropriate for the tantalite mineralization.
Quality of assay data and laboratory tests	<ul style="list-style-type: none"> The nature, quality and appropriateness of the assaying and laboratory procedures used and whether the technique is considered partial or total. For geophysical tools, spectrometers, handheld XRF instruments, etc, the parameters used in determining the analysis including instrument make and model, reading times, calibrations factors applied and their derivation, etc. Nature of quality control procedures adopted (eg standards, blanks, duplicates, external laboratory checks) and whether acceptable levels of accuracy (ie lack of bias) and precision have been established. 	<ul style="list-style-type: none"> The XRF assay technique is considered to be robust. Standards, blanks and duplicates were submitted in varying frequency throughout the exploration campaigns. Bald Hill operated as a producing mine until 2006, during which verification of assay results from drilling was conducted. No geophysical methods were used to determine assay results.
Verification of sampling and assaying	<ul style="list-style-type: none"> The verification of significant intersections by either independent or alternative company personnel. The use of twinned holes. Documentation of primary data, data entry procedures, data verification, data storage (physical and electronic) protocols. Discuss any adjustment to assay data. 	<ul style="list-style-type: none"> The correlations made between closely spaced holes is considered reasonable. The Ta₂O₅ assays show a marked correlation with the pegmatite intersections via elevated downhole grades. Drill logs exist for all holes either as electronic files or hardcopy. All drilling data has been loaded to a database and rigorously validated prior to use. Graphical verification was made to see that elevated Ta₂O₅ assays correlated

Criteria	JORC Code explanation	Commentary
		with the assigned downhole lithology.
<i>Location of data points</i>	<ul style="list-style-type: none"> Accuracy and quality of surveys used to locate drillholes (collar and down-hole surveys), trenches, mine workings and other locations used in Mineral Resource estimation. Specification of the grid system used. Quality and adequacy of topographic control. 	<ul style="list-style-type: none"> Collar coordinates were derived from a 1983 50m by 50m local grid. This was resurveyed in 1996. The drilling coordinates prior to 2014 have been transformed to produce GDA94 coordinates. Current drilling is surveyed via a Differential GPS to produce GDA94 coordinates. The area is of low relief and topographic control is of reasonable accuracy.
<i>Data spacing and distribution</i>	<ul style="list-style-type: none"> Data spacing for reporting of Exploration Results. Whether the data spacing and distribution is sufficient to establish the degree of geological and grade continuity appropriate for the Mineral Resource and Ore Reserve estimation procedure(s) and classifications applied. Whether sample compositing has been applied. 	<p>North Pit Extended & Far South Areas.</p> <ul style="list-style-type: none"> The majority of the drillholes are nominally spaced at 25m by 25m on a rectangular grid rotated approximately 12.5deg to the west. Some of the holes prior to 2014 are closer spaced. The spacing of holes is considered adequate for the Mineral Resource estimation and classification. There is no evidence of sample compositing.
<i>Orientation of data in relation to geological structure</i>	<ul style="list-style-type: none"> Whether the orientation of sampling achieves unbiased sampling of possible structures and the extent to which this is known, considering the deposit type. If the relationship between the drilling orientation and the orientation of key mineralised structures is considered to have introduced a sampling bias, this should be assessed and reported if material. 	<ul style="list-style-type: none"> The majority of drilling is vertical. The tantalite-bearing pegmatites are generally flat to shallowly dipping in nature. Therefore, the majority of drilling intercepts are assumed to be only marginally greater than true width, with minimal opportunity for sample bias.
<i>Sample security</i>	<ul style="list-style-type: none"> The measures taken to ensure sample security. 	<ul style="list-style-type: none"> The procedures applied were aligned to the industry practices prevailing at the time of sample collection, despatch, and analysis. Given the relative grade and value of the commodity, the procedures are considered to be adequate.
<i>Audits or reviews</i>	<ul style="list-style-type: none"> The results of any audits or reviews of sampling techniques and data. 	<ul style="list-style-type: none"> Prior to 1989 Fugro Spatial Solutions Pty Ltd were commissioned to confirm collar locations of a selected number of drillholes.

Section 2 Reporting of Exploration Results

(Criteria listed in the preceding section also apply to this section.)

Criteria	JORC Code explanation	Commentary
<i>Mineral tenement and land tenure status</i>	<ul style="list-style-type: none"> Type, reference name/number, location and ownership including agreements or material issues with third parties such as joint ventures, partnerships, overriding royalties, native title interests, historical sites, wilderness or national park and environmental settings. The security of the tenure held at the time of reporting along with any known impediments to obtaining a licence to operate in the area. 	<ul style="list-style-type: none"> The portfolio of mineral tenements, comprising mining leases, exploration licences, prospecting licences, miscellaneous licences, a general-purpose lease, and a retention lease are in good standing.

Criteria	JORC Code explanation	Commentary
Exploration done by other parties	<ul style="list-style-type: none"> Acknowledgment and appraisal of exploration by other parties. 	<ul style="list-style-type: none"> Alluvial tantalite has been mined periodically from the early 1970s. Gwalia Consolidated Limited undertook exploration for tantalite-bearing pegmatites from 1983-1998. Work included mapping, costeaning, and several phases of drilling using RAB, RC, and diamond methods. The work identified mineral resources that were considered uneconomic at the time. Haddington entered agreement to develop the resource and mining commenced in 2001 and continued until 2005. Haddington continued with exploration until 2009. Living Waters acquired the project in 2009 and continued with limited exploration to the north of the main pit area.
Geology	<ul style="list-style-type: none"> Deposit type, geological setting and style of mineralisation. 	<ul style="list-style-type: none"> The Bald Hill area is underlain by generally north-striking, steeply dipping Archaean metasediments (schists and greywackes) and granitoids. Felsic porphyries and pegmatite sheets and veins have intruded the Archaean rocks. Generally, the pegmatites parallel the regional foliation, occurring as gently dipping sheets and as steeply dipping veins. The pegmatites vary in width and are generally comprised quartz-albite-orthoclase-muscovite-spodumene in varying amounts. Late-stage albitisation in the central part of the main outcrop area has resulted in fine-grained, banded, sugary pegmatites with visible fine-grained, disseminated tantalite. A thin hornfels characterised by needle hornblende crystals is often observed in adjacent country rocks to the pegmatitic intrusives. Tantalite generally occurs as fine disseminated crystals commonly associated with fine-grained albite zones, or as coarse crystals associated with cleavelandite. Weathering of the pegmatites yields secondary mineralised accumulations in alluvial/eluvial deposits.
Drillhole Information	<ul style="list-style-type: none"> A summary of all information material to the understanding of the exploration results including a tabulation of the following information for all Material drillholes: <ul style="list-style-type: none"> easting and northing of the drillhole collar elevation or RL (Reduced Level – elevation above sea level in metres) of the drillhole collar dip and azimuth of the hole down hole length and interception depth hole length. If the exclusion of this information is justified on the basis that the information is not Material and this exclusion does not detract from the understanding of the report, the Competent Person should clearly explain why this is the case. 	<ul style="list-style-type: none"> All drillholes have northing and easting collar coordinates in GDA94. Although most drillholes have a collar elevation (relative to mean sea level), there were 127 drillholes with no collar elevation and a further 74 drillholes where there was mismatch with the topography digital terrain model. The collar elevation for these 201 drillholes were derived from the topography digital terrain model. The majority of drilling is vertical. There are 132 (–60°) angled drillholes in the database. For 38 angled drillholes, the set up survey is duplicated at the bottom of the drillhole. A total of 54 drillholes in the database have no downhole survey and were treated as vertical. For costeans, an azimuth with a zero or small dip is recorded to define their orientation. The orientation and lengths were validated against available maps and electronic data sets. AMC conducted checks of the collar locations, drillhole depths, geological logging, assay results for a portion of the database from reports, and electronic data sets.

Criteria	JORC Code explanation	Commentary
Data aggregation methods	<ul style="list-style-type: none"> <i>In reporting Exploration Results, weighting averaging techniques, maximum and/or minimum grade truncations (eg cutting of high grades) and cut-off grades are usually Material and should be stated.</i> <i>Where aggregate intercepts incorporate short lengths of high grade results and longer lengths of low grade results, the procedure used for such aggregation should be stated and some typical examples of such aggregations should be shown in detail.</i> <i>The assumptions used for any reporting of metal equivalent values should be clearly stated.</i> 	<ul style="list-style-type: none"> No aggregated intercepts are reported. Metal equivalents have not been used.
Relationship between mineralisation widths and intercept lengths	<ul style="list-style-type: none"> <i>These relationships are particularly important in the reporting of Exploration Results.</i> <i>If the geometry of the mineralisation with respect to the drillhole angle is known, its nature should be reported.</i> <i>If it is not known and only the down hole lengths are reported, there should be a clear statement to this effect (eg 'down hole length, true width not known').</i> 	<ul style="list-style-type: none"> The majority of drilling completed at Bald Hill – Central has used vertical holes. The tantalite-bearing pegmatites are generally flat to shallowly dipping in nature. Therefore, the majority of drilling intercepts are assumed to be only marginally greater than true width.
Diagrams	<ul style="list-style-type: none"> <i>Appropriate maps and sections (with scales) and tabulations of intercepts should be included for any significant discovery being reported These should include, but not be limited to a plan view of drillhole collar locations and appropriate sectional views.</i> 	<ul style="list-style-type: none"> Drilling locations are shown in the report.
Balanced reporting	<ul style="list-style-type: none"> <i>Where comprehensive reporting of all Exploration Results is not practicable, representative reporting of both low and high grades and/or widths should be practiced to avoid misleading reporting of Exploration Results.</i> 	<ul style="list-style-type: none"> Not applicable
Other substantive exploration data	<ul style="list-style-type: none"> <i>Other exploration data, if meaningful and material, should be reported including (but not limited to): geological observations; geophysical survey results; geochemical survey results; bulk samples – size and method of treatment; metallurgical test results; bulk density, groundwater, geotechnical and rock characteristics; potential deleterious or contaminating substances.</i> 	<ul style="list-style-type: none"> The water table in the mine site area is at least 15 m below ground surface and confined to steeply dipping, north–south-trending shear zones. Local water bore analyses indicate hypersaline water with total dissolved salts (TDS) >200,000 mg/L and pH 5.8–6.95.
Further work	<ul style="list-style-type: none"> <i>The nature and scale of planned further work (eg tests for lateral extensions or depth extensions or large-scale step-out drilling).</i> <i>Diagrams clearly highlighting the areas of possible extensions, including the main geological interpretations and future drilling areas, provided this information is not commercially sensitive.</i> 	<ul style="list-style-type: none"> Further RC and diamond drilling is warranted at the various deposits to explore for additional resources and improve the understanding of the current resources prior to mining.

Section 3 Estimation and Reporting of Mineral Resources

(Criteria listed in section 1, and where relevant in section 2, also apply to this section.)

Criteria	JORC Code explanation	Commentary
Database	<ul style="list-style-type: none"> <i>Measures taken to ensure that data has not been corrupted by, for example, transcription or keying errors, between its initial collection and its use for</i> 	<ul style="list-style-type: none"> Available data have been compiled into a series of Excel spreadsheets for validation purposes.

Criteria	JORC Code explanation	Commentary
<i>integrity</i>	<p><i>Mineral Resource estimation purposes.</i></p> <ul style="list-style-type: none"> <i>Data validation procedures used.</i> 	<ul style="list-style-type: none"> Assay data were checked against original assay sheets where available and, in particular, where the results were considered potentially erroneous. Errors generated due to from-to and assaying or lithology overlap errors were rectified when the data from the Excel spreadsheets was exported into the software used in the estimation.
<i>Site visits</i>	<ul style="list-style-type: none"> <i>Comment on any site visits undertaken by the Competent Person and the outcome of those visits.</i> <i>If no site visits have been undertaken indicate why this is the case.</i> 	<ul style="list-style-type: none"> Al Maynard and Associates ("AM&A") undertook an initial site visit to the Bald Hill Tantalite Project for AMAL on the 18 February, 2014 and an associate geologist, Phil Jones, on behalf of AM&A conducted follow up visits on 31 March 2015, 14-18 December 2015 and 18-22 April 2016. A previous field trip to the site area for a separate client was conducted by Al Maynard in 2002.
<i>Geological interpretation</i>	<ul style="list-style-type: none"> <i>Confidence in (or conversely, the uncertainty of) the geological interpretation of the mineral deposit.</i> <i>Nature of the data used and of any assumptions made.</i> <i>The effect, if any, of alternative interpretations on Mineral Resource estimation.</i> <i>The use of geology in guiding and controlling Mineral Resource estimation.</i> <i>The factors affecting continuity both of grade and geology.</i> 	<ul style="list-style-type: none"> Exploration and mining history in the Bald Hill area has shown that tantalite mineralisation is confined to pegmatite intrusions. Geological logging and Ta₂O₅ grades have been used to create a series of pegmatite wireframes that constrain the tantalite mineralisation for the purpose of Mineral Resource estimation. The pegmatites are relatively thin with pegmatites greater than 1 m in thickness being considered. The geometry of the pegmatites can change rapidly over short distances and, as such, knowledge of their distribution is critical to a robust estimate.
<i>Dimensions</i>	<ul style="list-style-type: none"> <i>The extent and variability of the Mineral Resource expressed as length (along strike or otherwise), plan width, and depth below surface to the upper and lower limits of the Mineral Resource.</i> 	<ul style="list-style-type: none"> The North Pit Extended Area resource has grid dimensions of approximately 130m north by 160 east and 50m depth from surface. The Far South Area resource has grid dimensions of approximately 220m north by 250 east and 75m depth from surface.
<i>Estimation and modelling techniques</i>	<ul style="list-style-type: none"> <i>The nature and appropriateness of the estimation technique(s) applied and key assumptions, including treatment of extreme grade values, domaining, interpolation parameters and maximum distance of extrapolation from data points. If a computer assisted estimation method was chosen include a description of computer software and parameters used.</i> <i>The availability of check estimates, previous estimates and/or mine production records and whether the Mineral Resource estimate takes appropriate account of such data.</i> <i>The assumptions made regarding recovery of by-products.</i> <i>Estimation of deleterious elements or other non-grade variables of economic significance (eg sulphur for acid mine drainage characterisation).</i> <i>In the case of block model interpolation, the block size in relation to the average sample spacing and the search employed.</i> <i>Any assumptions behind modelling of selective mining units.</i> <i>Any assumptions about correlation between variables.</i> <i>Description of how the geological interpretation was used to control the resource estimates.</i> 	<ul style="list-style-type: none"> Closed wireframes of minimum thickness >1m were constructed according to the geological understanding of the areas and modified so that they contained Ta₂O₅ grades of >= 160 ppm. Lower grades were allowed but only where the grade intercepts averaged >160ppm. Wireframes extended halfway between holes and adjacent sections. 1m sample composites from within the wireframes were used to estimate grades into a block model of 10mY by 10X by 1mZ approximating half the drill spacing and equalling the drillhole sampling. Wireframe percentages were calculated for each block. Block estimates were made (using Gemcom software) for the principal components Ta₂O₅ and Sn using ordinary kriging controlled by anisotropic variogram models (using GeoAccess software) which reflected the overall geology. Other grades for Nb₂O₅, Cs, Li, Rb, U and Th were estimated using inverse distance squared. All estimates used ellipsoid sample searches orientated to the variogram directions. Maximum and minimum samples used for block estimation were chosen to make the average of the estimated blocks and the averaged estimating sample grades as close as possible. Ta₂O₅ and Sn were estimated uncut and top-cut grades. Top-cut grades were

Criteria	JORC Code explanation	Commentary
	<ul style="list-style-type: none"> Discussion of basis for using or not using grade cutting or capping. The process of validation, the checking process used, the comparison of model data to drillhole data, and use of reconciliation data if available. 	decided by inspection of the sample distributions. Other grades were estimated uncut.
Moisture	<ul style="list-style-type: none"> Whether the tonnages are estimated on a dry basis or with natural moisture, and the method of determination of the moisture content. 	<ul style="list-style-type: none"> The density used is considered to be equivalent of a dry in situ bulk density.
Cut-off parameters	<ul style="list-style-type: none"> The basis of the adopted cut-off grade(s) or quality parameters applied. 	<ul style="list-style-type: none"> A cut-off of 160ppm Ta₂O₅ was selected after reviewing previous work suggesting weathering cut-off grades.
Mining factors or assumptions	<ul style="list-style-type: none"> Assumptions made regarding possible mining methods, minimum mining dimensions and internal (or, if applicable, external) mining dilution. It is always necessary as part of the process of determining reasonable prospects for eventual economic extraction to consider potential mining methods, but the assumptions made regarding mining methods and parameters when estimating Mineral Resources may not always be rigorous. Where this is the case, this should be reported with an explanation of the basis of the mining assumptions made. 	<ul style="list-style-type: none"> It is assumed that selective open-pit mining methods will be applied, similar to those that operated from 2001 to 2005 with a minimum mining thickness greater and 1m.
Metallurgical factors or assumptions	<ul style="list-style-type: none"> The basis for assumptions or predictions regarding metallurgical amenability. It is always necessary as part of the process of determining reasonable prospects for eventual economic extraction to consider potential metallurgical methods, but the assumptions regarding metallurgical treatment processes and parameters made when reporting Mineral Resources may not always be rigorous. Where this is the case, this should be reported with an explanation of the basis of the metallurgical assumptions made. 	<ul style="list-style-type: none"> The extraction method employed previously was successful in extracting the tantalum minerals. It has been proposed that a similar process would be used in the future, and it is assumed it would be also successful in extracting the mineral.
Environmental factors or assumptions	<ul style="list-style-type: none"> Assumptions made regarding possible waste and process residue disposal options. It is always necessary as part of the process of determining reasonable prospects for eventual economic extraction to consider the potential environmental impacts of the mining and processing operation. While at this stage the determination of potential environmental impacts, particularly for a greenfields project, may not always be well advanced, the status of early consideration of these potential environmental impacts should be reported. Where these aspects have not been considered this should be reported with an explanation of the environmental assumptions made. 	<ul style="list-style-type: none"> Previously, the generated waste materials were used to backfill mined-out pits or delivered to a tailings storage facility. For any new operation, it is expected that this approach would again be used.
Bulk density	<ul style="list-style-type: none"> Whether assumed or determined. If assumed, the basis for the assumptions. If determined, the method used, whether wet or dry, the frequency of the measurements, the nature, size and representativeness of the samples. The bulk density for bulk material must have been measured by methods that adequately account for void spaces (vugs, porosity, etc), moisture and differences between rock and alteration zones within the deposit. Discuss assumptions for bulk density estimates used in the evaluation process of the different materials. 	<ul style="list-style-type: none"> Density determinations obtained via metallurgical testwork and pegmatite pit grab samples indicate an average bulk density of 2.6t/m³.
Classification	<ul style="list-style-type: none"> The basis for the classification of the Mineral Resources into varying confidence categories. 	<ul style="list-style-type: none"> The Mineral Resources have been classified by considering the Slope of the Regression (SoR) for each block which has been calculated during kriging.

Criteria	JORC Code explanation	Commentary
	<ul style="list-style-type: none"> <i>Whether appropriate account has been taken of all relevant factors (ie relative confidence in tonnage/grade estimations, reliability of input data, confidence in continuity of geology and metal values, quality, quantity and distribution of the data).</i> <i>Whether the result appropriately reflects the Competent Person's view of the deposit.</i> 	<ul style="list-style-type: none"> Measured – none due to the large drillhole spacing. Indicated – SoR >0.75. Inferred – SoR =<0.75 and >0.5. Unclassified – SoR =<0.5 or low number of estimating composites or wireframe thickness = 1m.
<i>Audits or reviews</i>	<ul style="list-style-type: none"> <i>The results of any audits or reviews of Mineral Resource estimates.</i> 	No audits or reviews have been completed.
<i>Discussion of relative accuracy/ confidence</i>	<ul style="list-style-type: none"> <i>Where appropriate a statement of the relative accuracy and confidence level in the Mineral Resource estimate using an approach or procedure deemed appropriate by the Competent Person. For example, the application of statistical or geostatistical procedures to quantify the relative accuracy of the resource within stated confidence limits, or, if such an approach is not deemed appropriate, a qualitative discussion of the factors that could affect the relative accuracy and confidence of the estimate.</i> <i>The statement should specify whether it relates to global or local estimates, and, if local, state the relevant tonnages, which should be relevant to technical and economic evaluation. Documentation should include assumptions made and the procedures used.</i> <i>These statements of relative accuracy and confidence of the estimate should be compared with production data, where available.</i> 	<ul style="list-style-type: none"> No statistical or geostatistical method was applied. Factors impacting the accuracy and confidence of the Mineral Resources: Accuracy of historical drilling data used within the current drilling areas is unknown. Geological control of the tantalite mineralisation within the pegmatites is not fully understood. Hence at a local scale the spatial continuity and geometry of mineralisation between drillholes cannot be predicted with certainty.

Section 4 Estimation and Reporting of Ore Reserves

(Criteria listed in section 1, and where relevant in sections 2 and 3, also apply to this section.)

Criteria	JORC Code explanation	Commentary
Mineral Resource estimate for conversion to Ore Reserves	<ul style="list-style-type: none"> Description of the Mineral Resource estimate used as a basis for the conversion to an Ore Reserve. Clear statement as to whether the Mineral Resources are reported additional to, or inclusive of, the Ore Reserves. 	<ul style="list-style-type: none"> Details of the Mineral Resource estimate used as the basis for the conversion to an Ore Reserve are detailed in the preceding section. The resources converted are at Boreline and Central modelled and estimated by Varley. Reserves are exclusive of Resources.
Site visits	<ul style="list-style-type: none"> Comment on any site visits undertaken by the Competent Person and the outcome of those visits. If no site visits have been undertaken indicate why this is the case. 	<ul style="list-style-type: none"> Al Maynard, the Competent Person who is responsible for, <i>inter alia</i>, the Ore Reserve estimates in this report, undertook an initial site visit to the Bald Hill Tantalite Project for AMAL on 18 February, 2014 and an associate geologist, Phil Jones, on behalf of AM&A conducted follow up visits on 31 March 2015, 14-18 December 2015 and 18-22 April 2016. Gary McCrae of Minecomp Pty Ltd, did not visit the site but relied on revenue and cost estimates and other mining factors supplied by AMAL. Al Maynard is satisfied and verifies that the Ore Reserve estimates by McCrae meet the standards of quality and accuracy required by the JORC Code (2012).
Study status	<ul style="list-style-type: none"> The type and level of study undertaken to enable Mineral Resources to be converted to Ore Reserves. The Code requires that a study to at least Pre-Feasibility Study level has been undertaken to convert Mineral Resources to Ore Reserves. Such studies will have been carried out and will have determined a mine plan that is technically achievable and economically viable, and that material Modifying Factors have been considered. 	<ul style="list-style-type: none"> The revenue and cost estimates, geotechnical details and metallurgical recoveries used by McCrae were supplied by AMAL based on actual values incurred and current during the Boreline Oxide pit and by Haddington during previous mining. The costs used would have changed little since the study however the revenues may have varied with market fluctuations. Potential revenues from other minerals recoverable from the ore such as tin and lithium were not considered at all. Considering the level and detail at which the study was conducted the study would be considered to be a Pre-Feasibility Study according to the JORC (2012) Code
Cut-off parameters	<ul style="list-style-type: none"> The basis of the cut-off grade(s) or quality parameters applied. 	<ul style="list-style-type: none"> The cut-off grades and quality parameters applied are based on actual mining and processing experience by AMAL in the Boreline Oxide pit and by Haddington during previous mining.
Mining factors or assumptions	<ul style="list-style-type: none"> The method and assumptions used as reported in the Pre-Feasibility or Feasibility Study to convert the Mineral Resource to an Ore Reserve (i.e. either by application of appropriate factors by optimisation or by preliminary or detailed design). The choice, nature and appropriateness of the selected mining method(s) and other mining parameters including associated design issues such as pre- 	<ul style="list-style-type: none"> Whittle open pit shells were created by McCrae using costs, revenues and other mining, geotechnical and recovery parameters based on actual mining experience by AMAL in the Boreline Oxide pit and by Haddington during previous mining. The open pit designs incorporate and extend deeper and along strike previously mined open pits.

Criteria	JORC Code explanation	Commentary
	<ul style="list-style-type: none"> <i>strip, access, etc.</i> <i>The assumptions made regarding geotechnical parameters (eg pit slopes, stope sizes, etc), grade control and pre-production drilling.</i> <i>The major assumptions made and Mineral Resource model used for pit and stope optimisation (if appropriate).</i> <i>The mining dilution factors used.</i> <i>The mining recovery factors used.</i> <i>Any minimum mining widths used.</i> <i>The manner in which Inferred Mineral Resources are utilised in mining studies and the sensitivity of the outcome to their inclusion.</i> <i>The infrastructure requirements of the selected mining methods.</i> 	<ul style="list-style-type: none"> The open pit designs include Inferred and unclassified blocks modelled by Varley however only Indicated and Measured Resources were used to estimate Ore Reserves The assumptions made regarding geotechnical parameters, grade control, mining dilution factors, mining recovery factors and minimum mining widths are based on actual mining experience by AMAL at the Boreline Oxide pit and by Haddington during previous mining periods.
Metallurgical factors or assumptions	<ul style="list-style-type: none"> <i>The metallurgical process proposed and the appropriateness of that process to the style of mineralisation.</i> <i>Whether the metallurgical process is well-tested technology or novel in nature.</i> <i>The nature, amount and representativeness of metallurgical test work undertaken, the nature of the metallurgical domaining applied and the corresponding metallurgical recovery factors applied.</i> <i>Any assumptions or allowances made for deleterious elements.</i> <i>The existence of any bulk sample or pilot scale test work and the degree to which such samples are considered representative of the orebody as a whole.</i> <i>For minerals that are defined by a specification, has the ore reserve estimation been based on the appropriate mineralogy to meet the specifications?</i> 	<ul style="list-style-type: none"> The assumed metallurgical recovery methods used for the Reserve estimates are appropriate and are standard gravity methods, using spirals and tables, used by AMAL during the 2015/2016 plant commissioning and previously by Haddington. It is expected that all the pegmatite resources will be processed in an identical way and recoveries in the fresh ore likely to improve on the assumed recoveries used in the Study with experience and the planned installation of additional comminution equipment. No deleterious elements are known to exist in the Bald Hill pegmatite ore. Additional profitable by-products to tantalite are going to be produced by AMAL from the Bald Hill ore that were not considered in the Study including lithium in spodumene and tin in cassiterite.
Environmental	<ul style="list-style-type: none"> <i>The status of studies of potential environmental impacts of the mining and processing operation. Details of waste rock characterisation and the consideration of potential sites, status of design options considered and, where applicable, the status of approvals for process residue storage and waste dumps should be reported.</i> 	<ul style="list-style-type: none"> All the required environmental approvals for mining and waste storage will need to be obtained from the relevant authorities before mining proceeds, but since the area has been previously extensively mined, these approvals should be straight forward.
Infrastructure	<ul style="list-style-type: none"> <i>The existence of appropriate infrastructure: availability of land for plant development, power, water, transportation (particularly for bulk commodities), labour, accommodation; or the ease with which the infrastructure can be provided, or accessed.</i> 	<ul style="list-style-type: none"> Almost all the required infrastructure is in place including processing plant, workshops, offices, accommodation, water supply, roads etc.
Costs	<ul style="list-style-type: none"> <i>The derivation of, or assumptions made, regarding projected capital costs in the study.</i> <i>The methodology used to estimate operating costs.</i> <i>Allowances made for the content of deleterious elements.</i> <i>The derivation of assumptions made of metal or commodity price(s), for the principal minerals and co- products.</i> <i>The source of exchange rates used in the study.</i> <i>Derivation of transportation charges.</i> 	<ul style="list-style-type: none"> All the operating and transport costs are based on actual costs incurred by AMAL during the mining of the Boreline Oxide open pit and plant commissioning. The tantalite price and exchange rates used were publicly available and current at the time of the Study. All royalties applicable were included in the Study.

Criteria	JORC Code explanation	Commentary
	<ul style="list-style-type: none"> The basis for forecasting or source of treatment and refining charges, penalties for failure to meet specification, etc. The allowances made for royalties payable, both Government and private. 	
Revenue factors	<ul style="list-style-type: none"> The derivation of, or assumptions made regarding revenue factors including head grade, metal or commodity price(s) exchange rates, transportation and treatment charges, penalties, net smelter returns, etc. he derivation of assumptions made of metal or commodity price(s), for the principal metals, minerals and co-products. 	<ul style="list-style-type: none"> The head grade was based on the resource model with appropriate mining factors, mining recoveries and dilution, applied. The tantalite price used was the current price as indicated to AMAL by a major potential buyer of tantalite concentrates, Mitsubishi, at the time of the study. No value was assumed for other expected by-products such as lithium in spodumene and tin in cassiterite.
Market assessment	<ul style="list-style-type: none"> The demand, supply and stock situation for the particular commodity, consumption trends and factors likely to affect supply and demand into the future. A customer and competitor analysis along with the identification of likely market windows for the product. Price and volume forecasts and the basis for these forecasts. For industrial minerals the customer specification, testing and acceptance requirements prior to a supply contract. 	<ul style="list-style-type: none"> AMAL held discussions with a major potential buyer of tantalite concentrates, Mitsubishi, with regards concentrate quality and specifications as well as quantities they may accept once production at Bald Hill commences. Mitsubishi have tested tantalite concentrates produced at Bald Hill and they have communicated in writing that the concentrate is of premium quality and suitable for their processing.
Economic	<ul style="list-style-type: none"> The inputs to the economic analysis to produce the net present value (NPV) in the study, the source and confidence of these economic inputs including estimated inflation, discount rate, etc. NPV ranges and sensitivity to variations in the significant assumptions and inputs. 	<ul style="list-style-type: none"> Due to the short term required for the mining of the estimated reserves of less than six years and the current low annual inflation rate in Australia of less than 3%, a NPV economic analysis was not considered necessary and so was not carried out.
Social	<ul style="list-style-type: none"> The status of agreements with key stakeholders and matters leading to social licence to operate. 	<ul style="list-style-type: none"> Mining has been carried out previously at Bald Hill by Haddington within the last 10 years and no negative local social impacts were encountered during this period.
Other	<ul style="list-style-type: none"> To the extent relevant, the impact of the following on the project and/or on the estimation and classification of the Ore Reserves: Any identified material naturally occurring risks. The status of material legal agreements and marketing arrangements. The status of governmental agreements and approvals critical to the viability of the project, such as mineral tenement status, and government and statutory approvals. There must be reasonable grounds to expect that all necessary Government approvals will be received within the timeframes anticipated in the Pre-Feasibility or Feasibility study. Highlight and discuss the materiality of any unresolved matter that is dependent on a third party on which extraction of the reserve is contingent. 	<ul style="list-style-type: none"> There are no likely naturally occurring risks to the project beyond temporary disruption during periods of high rainfall restricting access in and out of the project. Marketing arrangements with potential buyers of the Bald Hill concentrates have not been completed and remain in progress. Almost all the governmental agreements and approvals critical to the viability of the project are already in place, such as mineral tenement status and government and statutory approvals. Applications for tailings disposal and mining Central have been made. There are reasonable grounds to expect that all necessary Government approvals will be received within the timeframes anticipated in the Pre-Feasibility study.
Classification	<ul style="list-style-type: none"> The basis for the classification of the Ore Reserves into varying confidence categories. Whether the result appropriately reflects the Competent Person's view of the deposit. 	<ul style="list-style-type: none"> All the quoted reserves are classified as Probable based only on Measured and Indicated resource estimates. It is the Competent Person's view that the this classification is appropriate considering the resource classification and the level of the Pre-Feasibility

Criteria	JORC Code explanation	Commentary
	<ul style="list-style-type: none"> The proportion of Probable Ore Reserves that have been derived from Measured Mineral Resources (if any). 	Study.
Audits or reviews	<ul style="list-style-type: none"> The results of any audits or reviews of Ore Reserve estimates. 	<ul style="list-style-type: none"> There have been no audits of the Ore Reserve estimates.
Discussion of relative accuracy/confidence	<ul style="list-style-type: none"> Where appropriate a statement of the relative accuracy and confidence level in the Ore Reserve estimate using an approach or procedure deemed appropriate by the Competent Person. For example, the application of statistical or geostatistical procedures to quantify the relative accuracy of the reserve within stated confidence limits, or, if such an approach is not deemed appropriate, a qualitative discussion of the factors which could affect the relative accuracy and confidence of the estimate. The statement should specify whether it relates to global or local estimates, and, if local, state the relevant tonnages, which should be relevant to technical and economic evaluation. Documentation should include assumptions made and the procedures used. Accuracy and confidence discussions should extend to specific discussions of any applied Modifying Factors that may have a material impact on Ore Reserve viability, or for which there are remaining areas of uncertainty at the current study stage. It is recognised that this may not be possible or appropriate in all circumstances. These statements of relative accuracy and confidence of the estimate should be compared with production data, where available. 	<ul style="list-style-type: none"> It is the opinion of the Competent Person, Al Maynard that the relative accuracy and confidence level in the Ore Reserve estimate is properly reflected by the Probable classification used when considering the procedures used etc. The Ore Reserve estimates are local and cover only the Boreline and Central deposits.