



# Mirach Energy Limited

Growing with Energy

April 2014

This presentation document is provided to summarise the Company's business operations to all shareholders post-AGM.

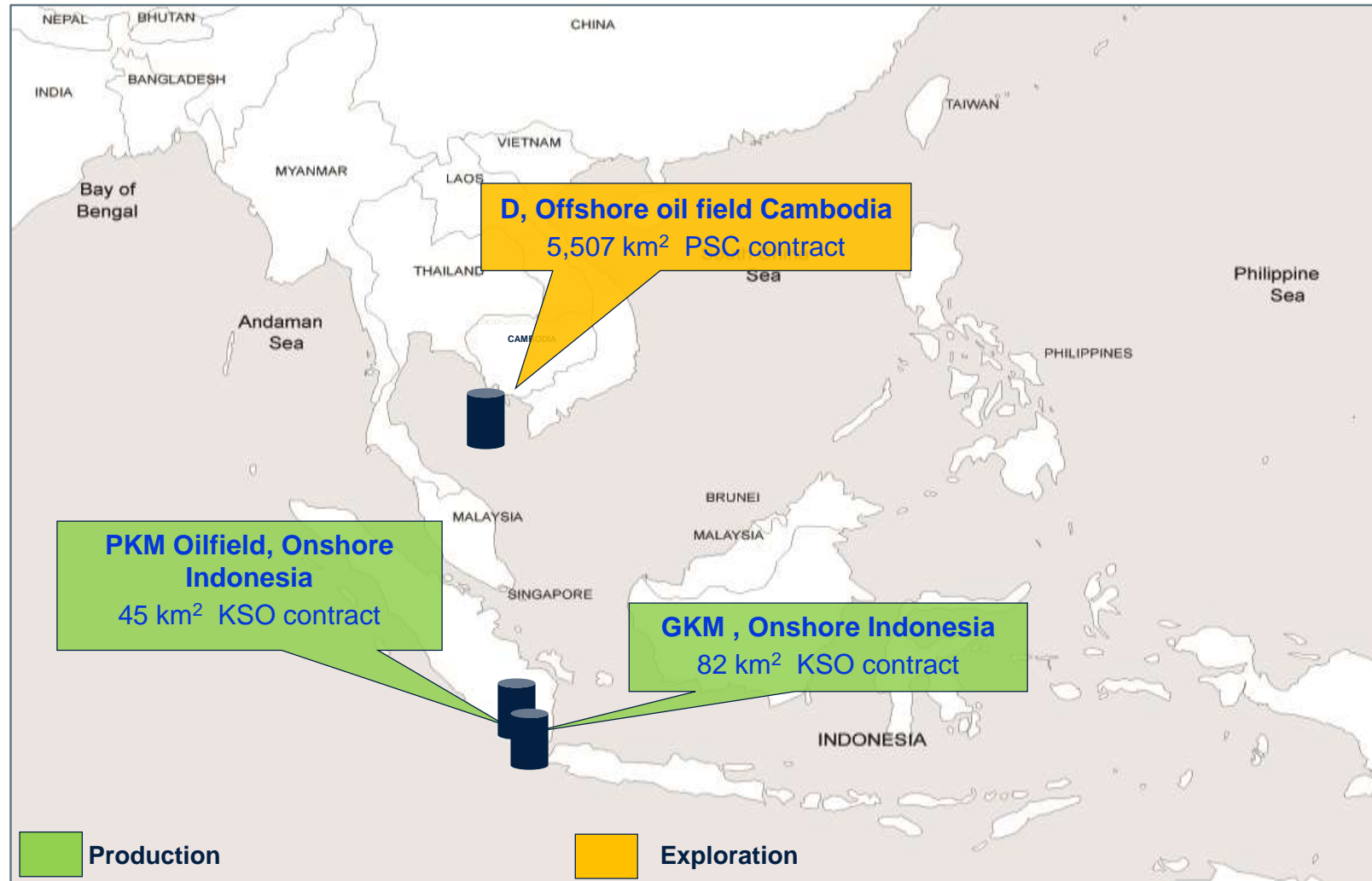
**Singapore   Hong Kong   Beijing   Jakarta   Phnom Penh**

---

## Overview of Mirach Energy

- ▶ **Exploration and production in SE Asia**
- ▶ **Produced more than ten thousand barrels of oil in South Sumatra**
- ▶ **Track record of asset acquisitions in Asia region**
- ▶ **Country focus on Cambodia and Indonesia**
- ▶ **Key industry partnerships: Pertamina, Cambodia Petroleum Authority, Da Qing oil field Enterprise, Petro China Drilling Co., etc.**
- ▶ **Strong and experienced management and technical team**
- ▶ **Headquarters in Hong Kong and Singapore, technical centre in Beijing, regional offices in Phnom Penh, Jakarta.**

# Asset Locations



# Block D Cambodia - Overview

## Khmer Basin, Thailand Gulf

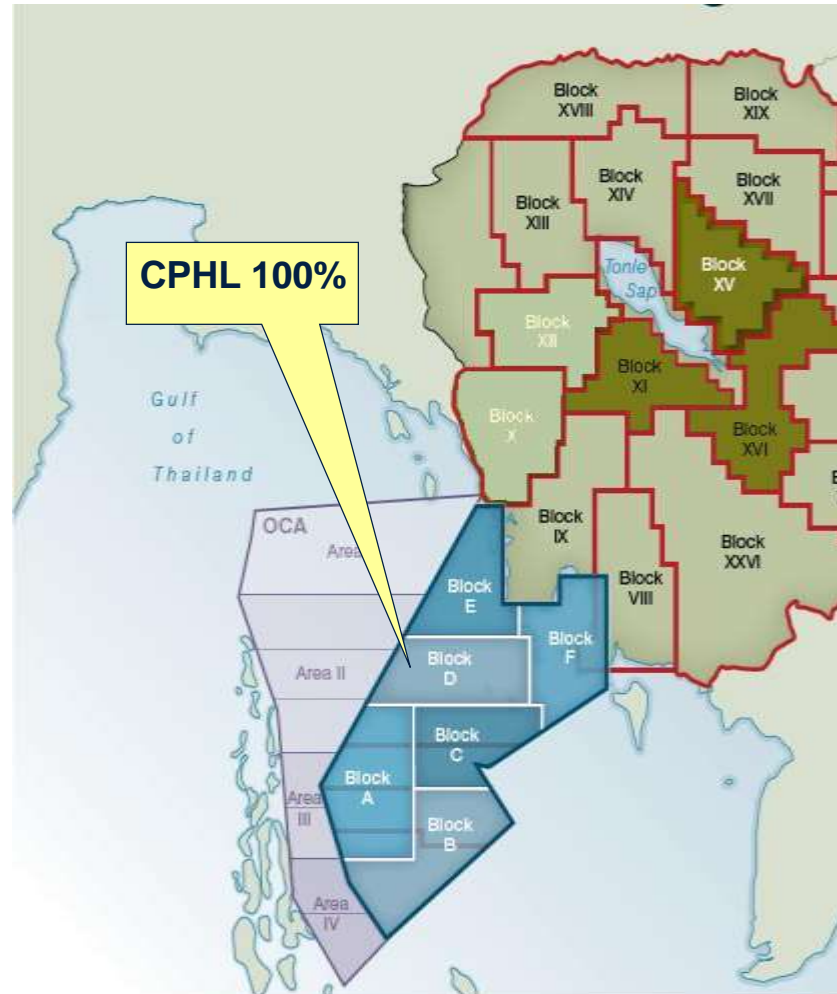
- ▶ About 150km offshore, water depth of 55m to 70m
- ▶ Acquired in 2006

## Gross prospective property gross un-risked resources

- ▶ Oil: 303.6 million barrels

## Block D PSC Contract:

Operating company	CPHL Cambodia
Mirach interest	48% + operatorship
Status	Exploration
Contract period expiry	March 2043
Production permit	30 years
Area	5,507 sq km



# Block D Cambodia - Structures

## Work done to date

- 6700 km 2-D seismic lines covered
- 400 sq km 3 -D seismic survey in block
- Prospects identified
- Five drilling targets identified
- Submitted seabed survey to authorities

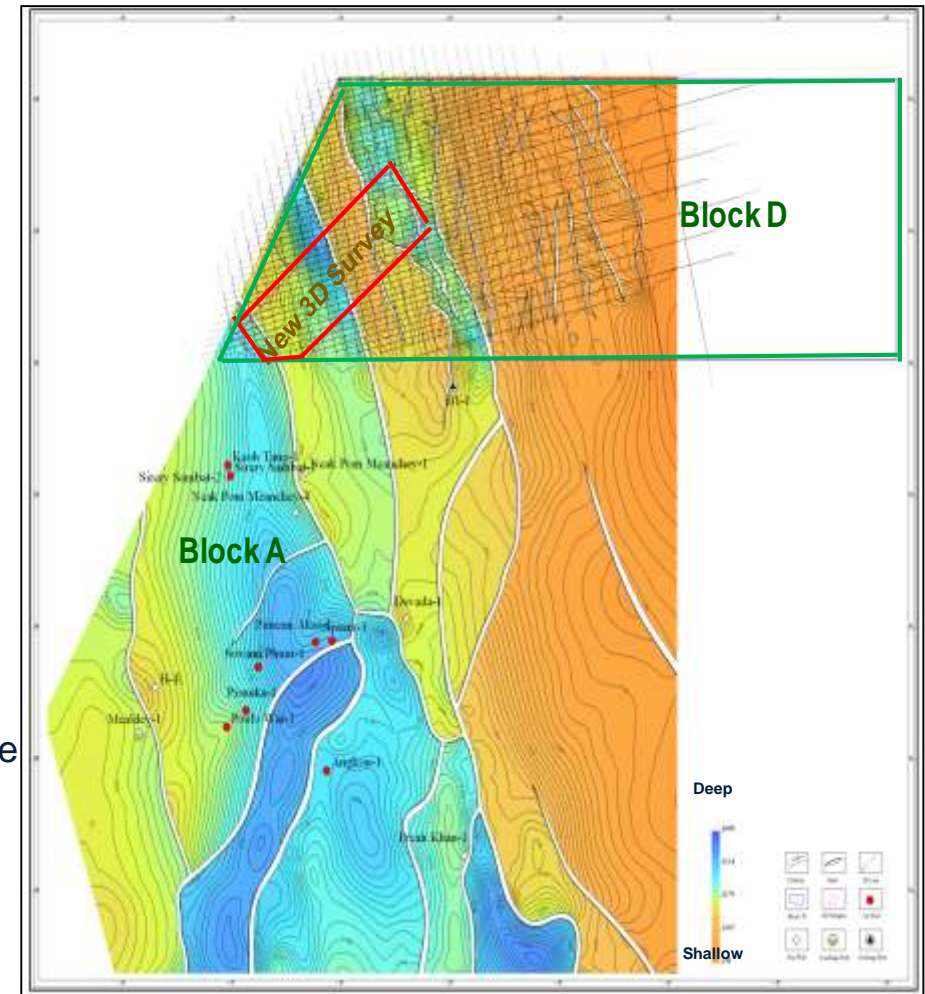
## Work programme

- Identified 3 E&P drilling wells
- Production drilling to commence after approval of seabed survey with new petroleum authorities, the General Department of Petroleum (GDP)

## Engineering preparation

- Assessing proposals from international drilling contractors

Block D structure



Local top basement structural map, offshore Cambodia

# Block D - McDaniel Competent person's Report Extract

at Dec. 30, 2013

Prospective Resources: Crude Oil and Condensate (MMbbl)										
	Property Gross (Unrisked)					Prospect				
	Initially	Low	Best		High	Geological	Risked Mean			
<b>Block D</b>	In-Place	Estimate	Estimate	Mean	Estimate	Chance of	Property	Company	Company	
<b>Prospect</b>	(Mean)	(P90)	(P50)		(P10)	Discovery	Gross	Gross	Net	
<b>(1) (6)</b>						(2)	(3)	(4)	(5)	
<b>S1</b>	143	11.8	27.1	31.4	59.3	42%	8.2	3.7	2.2	
<b>S2</b>	201	7.1	26.8	44.1	107.1	34%	9.3	4.2	2.6	
<b>S3</b>	939	77.3	170.9	191.0	420.5	32%	28.3	12.9	7.7	
<b>S4</b>	298	19.7	49.4	62.7	139.6	16%	4.7	2.2	1.3	
<b>S5</b>	171	10.8	29.4	37.5	79.0	30%	7.4	3.4	2.1	
<b>Total (7)</b>	1,751	126.6	303.6	366.8	805.4		57.9	26.4	15.9	

- Property gross un-risked estimate of 303.6 million barrels of P50 crude oil resource
- USD 305MM , NPV 10% (Mirach Energy 48%)

# PKM Oilfield, Indonesia (Joint Operations with Pertamina)

## South Sumatra Indonesia

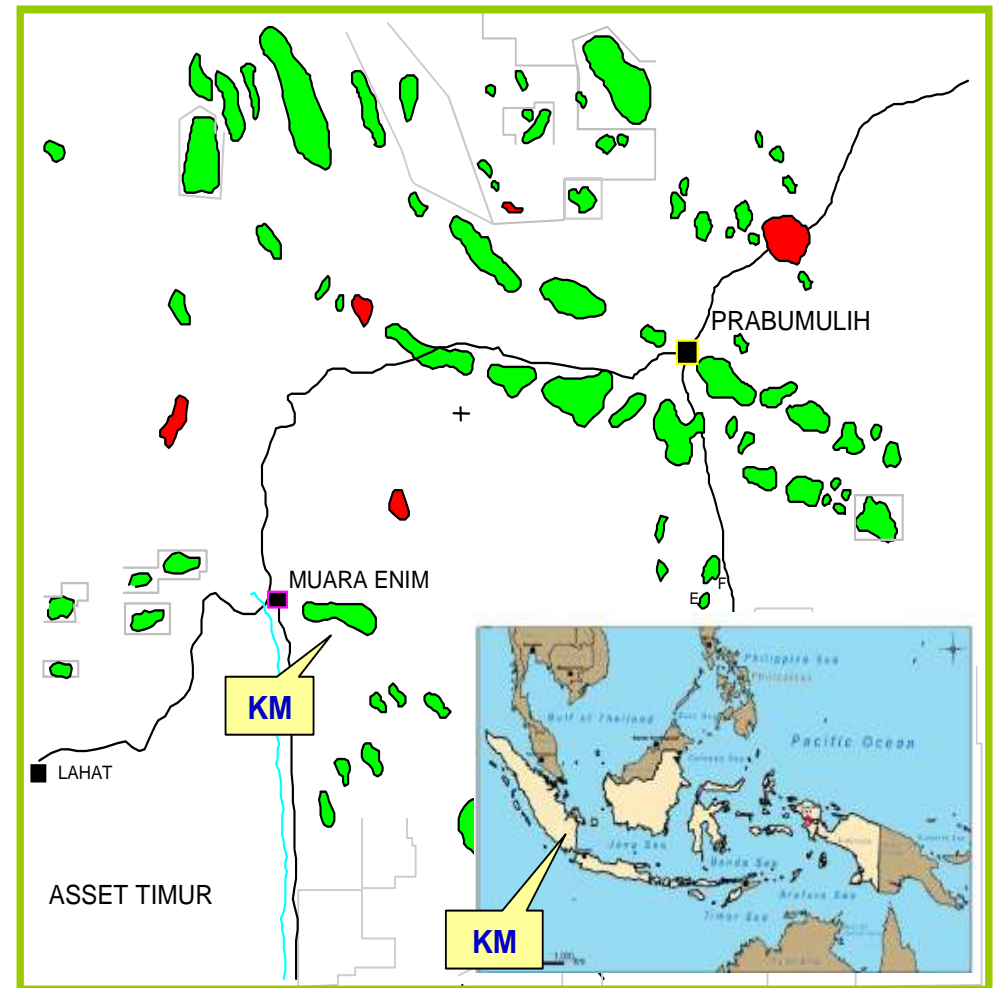
- Hand over to Mirach Energy subsidiary in October 2011
- DaQing Oilfield Enterprise (DQE) provides Integrated Production Management services (IPM)

Operator PKM	Mirach subsidiary -Prisma Kampung Minyak
Status	Production enhancement
Production period expiry	July 2026
Area	45 sq km

## Overview of PKM

- Property Gross 2C resource : 2,623 million barrels
- Prospective resource P50: 34.1 million barrels. ( KM deep)
- NPV(10%) of 2C: Best estimate case USD11.1 million
- NPV (10%) of KM deep: USD136 million

(McDaniel's Competent Person's Report in 31 Dec. 2013)



# PKM working plan

---

## Work Program since taking over:

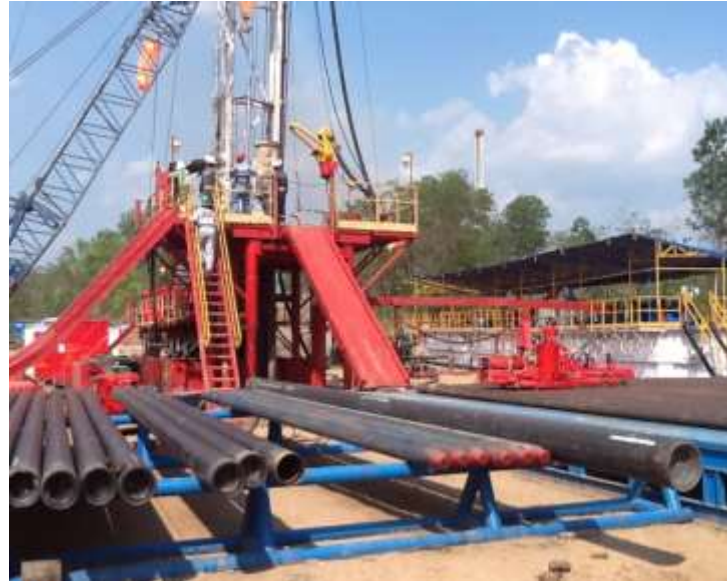
- ▶ **Reactivated 14 wells**
- ▶ **Worked-over 8 wells**
- ▶ **Drilled 9 new wells of around 400 metres depth**
- ▶ **Daily production about 100- 350 barrels**

## Work Program expected in 2014

- **To reactivate another 11 old wells**
- **To work-over another 12 wells**
- **2+3 new deeper wells ( more than 900 metres)**
- **To submit approval for expenditure (AFE) for waterflooding EOR system**



## PKM Site Photos



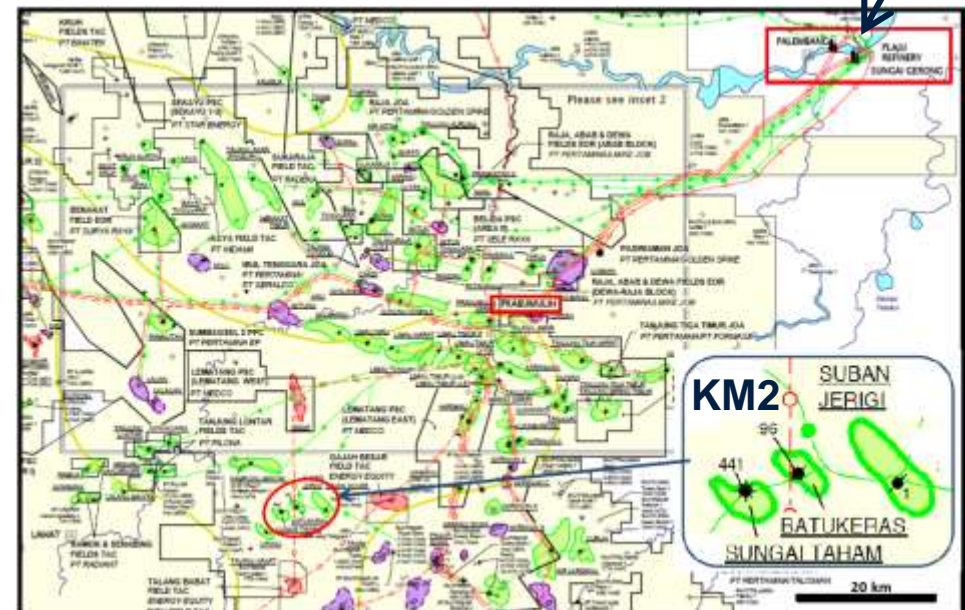
# GKM oilfield - Summary

- Location: South Sumatra, 7.5km north of PKM
- Contract: KSO, with Pertamina for production enhancement
- Mirach holds 10% interests
- KSO period: 15 years
- Block Area : 82 km<sup>2</sup>
- Light oil : Oil Gravity ° API 30-48
- Complete surface system and facilities
- Oil sands start from 100m to 1000m.
- Current production at: 120 barrels daily production
- To drill new wells in future

GKM oilfield consist of 3 Structures:  
Sungai Taham (ST)  
Batu Keras (BK)  
Suban Jeriji (SJ)



Plaju Refinery





# Thank you

[www.mirachenergy.com](http://www.mirachenergy.com)