



CIVMEC LIMITED
(Company Registration Number 201011837H)

Civmec substantially complete at Perth Stadium project

SINGAPORE – 14 October 2016 – Australia-based **Civmec Limited** (“Civmec” or the “Group”) today announced that it reached another major milestone on the Perth Stadium project, which sees Civmec’s works substantially complete.

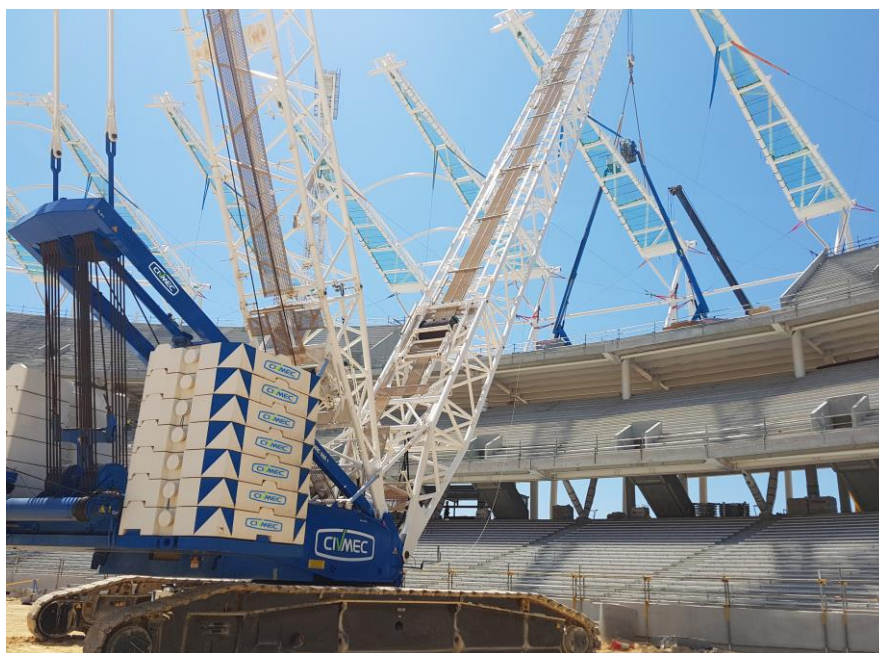
Having already successfully completed both the structural frame and installation of the precast seating platforms, Civmec has today achieved the significant milestone with the installation of the final one of 50 roof trusses.

With this milestone complete Civmec has minimal scope works outstanding, and expects all works to be fully complete by mid-November 2016.

Mr. Patrick Tallon, Civmec Chief Executive Officer, said: “We are proud to be a major contributor supporting the West Australian Government and Multiplex on this iconic WA project and we will continue to work with our client until the project is fully closed out. This architecturally significant project has presented many design challenges and it is very pleasing to have been able to work through these challenges and have been able to deliver an exceptionally high quality product, to a demanding schedule. The completion of this project again demonstrates our capabilities and commitment to delivering complex global structures for our clients. I wish to commend all our workforce, sub-contractors and suppliers who have been involved throughout the project”

Multiplex Regional Managing Director Chris Palandri said: “The completion of the truss erection is a major milestone for the project and one that has required dedication from all involved and we should be exceptionally proud of the achievement. “

Proposed Lifting the 50th truss into position at Perth Stadium;





CIVMEC LIMITED

(Company Registration Number 201011837H)

About Civmec Limited

Civmec is an integrated, multi-disciplinary construction and engineering services provider to the oil and gas, metals and minerals, infrastructure and defence sectors. Headquartered in Henderson, Western Australia, Civmec has regional offices in Broome (Western Australia), Darwin (Northern Territory, Australia), Newcastle and Sydney (New South Wales, Australia), and Gladstone (Queensland, Australia). It also has a presence in Singapore where it has been listed since 2012. Its core capabilities include heavy engineering, modularisation, SMP (structural, mechanical, piping), EIC (electrical, instrumentation and control), precast concrete, site civil works, industrial insulation, maintenance, offshore logistics, refractory, access solutions and training.

For more information, please visit our website at www.civmec.com.au