

CORPORATE PRESENTATION

FULL YEAR RESULTS 2015



KEONG HONG HOLDINGS LIMITED

1

Disclaimer

This document has been prepared and furnished to you solely for the purpose of introducing the information set out herein. This document does not constitute or form part of any offer, solicitation, recommendation or invitation for or in relation to the securities of any company described herein, nor does it constitute investment advice. This document may include information of a proprietary nature. This document does not purport to constitute all the information that the recipient might require and, in particular, does not address risk issues. It is not intended to form the basis of any investment decision, commitment or contract whatsoever, and no monies or other form of consideration is to be accepted on the basis of this document.

This document contains certain forward-looking statements with respect to the financial condition, results of operations and/or business of the Company and its subsidiaries and certain of the plans and objectives of the management of the Company and its subsidiaries. Such forward-looking statements involve known and unknown risks, uncertainties and other factors which may cause the actual results or performance of the Company and its subsidiaries to be materially different from any future results or performance expressed or implied by such forward-looking statements. Such forward-looking statements were made based on assumptions regarding the present and future business strategies of the Company and its subsidiaries and the political and economic environment in which the Company and its subsidiaries will operate in the future. Reliance should not be placed on these forward-looking statements, which reflect the view of the management of the Company and its subsidiaries as of the date of this document only.

This presentation was prepared exclusively for the parties invited for the purposes of discussion and must be viewed in conjunction with the oral presentation provided by the officers of Keong Hong Holdings Limited. This presentation does not take into consideration the investment objectives, financial situation or particular needs of any particular investor. The reader(s) of this presentation should consult his or her own independent professional advisors about the issues discussed herein. Neither this presentation nor any of its content may be copied or used without the prior consent of Keong Hong Holdings Limited.

2

Contents

1. Group Overview
2. Singapore Business
3. Overseas Business
4. Financial Highlights
5. Outlook and Strategies



3

1. Group Overview



Year In Review

October 2014

- Appointment of Intercontinental Hotels Group to manage its first hotel property in Singapore.

March 2015

- Acquired 15.12% of Kori Holdings Limited.
- If the Company converts its existing S\$5 million convertible bond into shares of Kori, the Company will own 24.2% of Kori and will become its second largest shareholder.

April 2015

- Appointment of Accor to manage its first two hotel properties in the Maldives.
- Establishment of S\$150 million multicurrency medium term note programme.

June 2015

- Issued S\$50 million 6.00 per cent term notes due 2018.

July 2015

- Award of S\$163.4 million contract for the construction of Parc Life Executive Condominium.

August 2015

- Award of S\$107.5 million contract for the construction of Raffles Hospital's 20-storey medical tower.



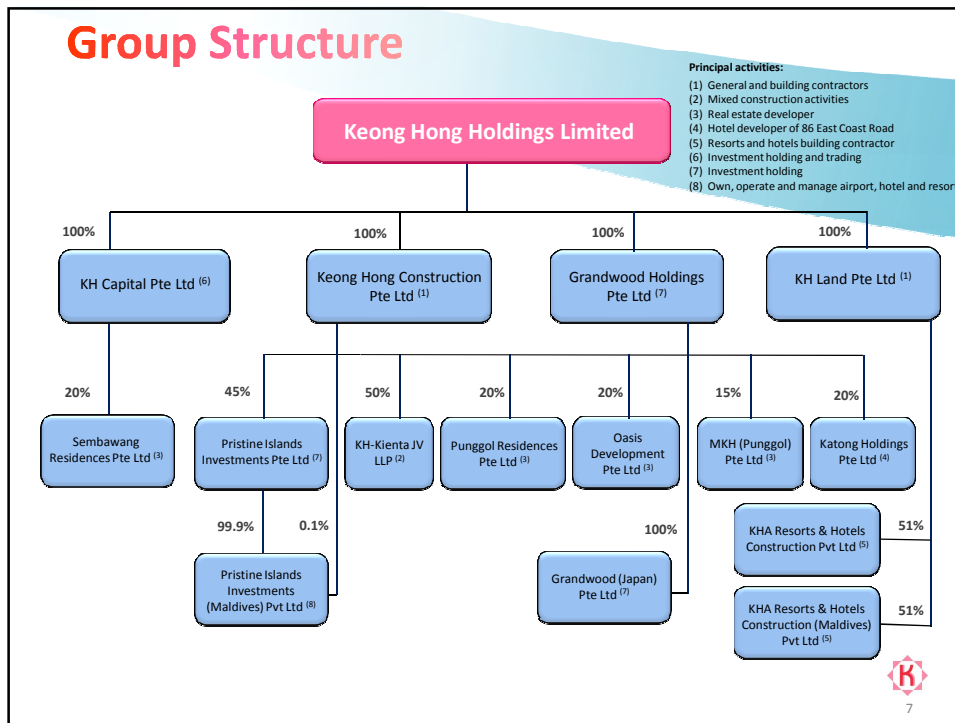
5

Financial Summary

S\$ '000	FY2012 Audited	FY2013 Audited	FY2014 Audited	FY2015 Unaudited
Revenue	167,360	146,623	272,881	280,289
EBITDA	26,886	27,809	26,194	46,713
EBITDA Margin (%)	16.06%	19.09%	9.60%	16.67%
Finance Costs	63	62	320	1,346
Total Assets	125,988	132,346	222,099	337,408
Total Liabilities	74,635	67,138	141,962	225,122
Debt (Borrowings only)	n.a.	3,005	21,413	66,501
Tangible Net Worth	51,111	64,972	79,894	112,059
Debt / Tangible Net Worth	n.a.	0.05	0.27	0.59
Debt / Total Assets	n.a.	0.02	0.10	0.20
EBITDA / Finance Costs	424.05	452.21	81.90	34.71



6



Building Construction Services Business

- The Group's construction projects covers new construction, A&A works of existing buildings, refurbishment and upgrading of existing buildings.
- The Group provides a broad range of building construction services for residential, commercial, industrial, infrastructural and institutional projects in the private and public sectors.







Residential	Commercial	Industrial	Institutional	Infrastructural
condominiums, apartment buildings, landed and public housing	office buildings, hotels, resorts and shopping mall	factories and warehouses	schools, medical centre, tertiary institutions and nursing home	domestic airport
Martin Place Residences, The Parvis, 8@Woodleigh, Terrace, Paterson Collection, J Gateway	Sime Darby Performance Centre, IBIS Hotel, Alexandra Central	Vicplas, AvaPlas, Makino	Toa Payoh Nursing Home, Mount Alvernia Hospital Sisters' Accommodation, SIM, Raffles Hospital's medical tower	Kooldoo Airport in the Maldives



8

Property Development Business

- Leveraging on our experience and expertise in the building construction sector, the Group has expanded into property development in 2012.
- Our strategy to partner reputable property developers and owners to jointly undertake residential development projects enables the Group to share resources with business partners and manage any business risks associated with the property development projects.
- We will continue to explore new business opportunities in property development in Singapore and other countries in the Asia Pacific region, such as Australia and Japan.
- The Group has been appointed the main contractor for all its joint venture residential developments:

	Twin Waterfalls	SkyPark Residences	The Amore	Parc Life
Joint venture partners	FCL Tampines Court Pte Ltd (a subsidiary of Frasers Centrepoint Limited)	JBE Holdings Pte Ltd	Master Contract Services Pte Ltd, JBE Holdings Pte Ltd	FCL Tampines Court Pte Ltd (a subsidiary of Frasers Centrepoint Limited)
Group's Stake	20%	20%	15%	20%
Approximate contract sum	S\$162.3 million	S\$149.9 million	S\$118.0 million	S\$163.4 million



9

Hotel and Resort Development Business

- As global tourism is projected to increase over the next ten years, the Group's expansion into hotel and resort development will provide the Group with recurring income and an added engine of growth
- The Group intends to achieve such expansion through suitable acquisitions, investments, strategic alliances and/or joint ventures, which will give us access to new markets and prospective customers.
- We have four hotel and resort developments in Singapore and the Maldives:

	Singapore	The Maldives
Development	<ul style="list-style-type: none"> • Hotel Indigo Singapore Katong • Holiday Inn Express Singapore Katong • F&B outlets and retail shops 	<ul style="list-style-type: none"> • Mercure Maldives Kooddoo Resort • Pullman Maldives Maamutaa Resort
Joint venture partners	Master Contract Services Pte Ltd, Asia Development Pte Ltd	Sansui Holding Pte Ltd, BRC Asia Limited, L3 Development Pte Ltd, Hotels & Resort Construction Pvt Ltd
Hotel manager	InterContinental Hotels Group (IHG)	Accor
Group Stake	20%	45%

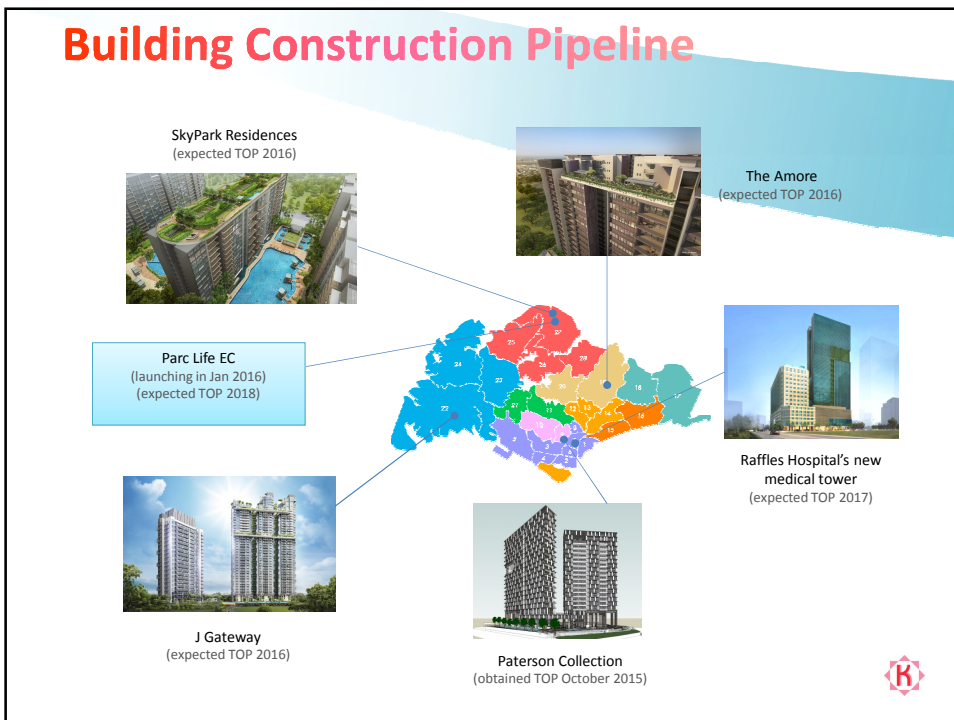


10

2. Singapore Business



Building Construction Pipeline



Property Development Projects

Twin Waterfalls



Type	Executive Condominium
Total Units	728
Launch Date	February 2012
Sales Status	100%
Average Selling Price	S\$698 psf
Group's Stake	20%
TOP	2 June 2015

SkyPark Residences



Type	Executive Condominium
Total Units	506
Launch Date	November 2013
Sales Status	92%
Average Selling Price	S\$793 psf
Group's Stake	20%
Expected TOP	2016



13

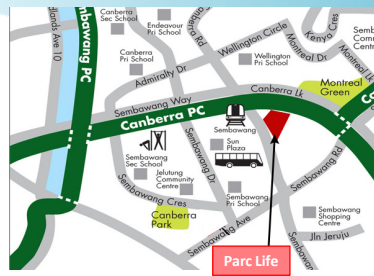
Property Development Projects

The Amore



Type	Executive Condominium
Total Units	378
Launch Date	January 2015
Sales Status	46%
Average Selling Price	S\$795 psf
Group's Stake	15%
Expected TOP	2016

Parc Life



Type	Executive Condominium
Total Units	660
Launch Date	January 2016
Sales Status	n.a.
Average Selling Price	n.a.
Group's Stake	20%
Expected TOP	2018



14

Hotel Development Projects



131-room Hotel Indigo Singapore Katong

451-room Holiday Inn Express Singapore Katong

Food and beverage outlets and retail shops

The hotels will be managed by InterContinental Hotels Group, to be opened in 2016

Group holds 20% interest in this joint development



15

3. Overseas Business – The Maldives



Infrastructural Project - Airport Expansion



Maamutaa Island
Kooddoo Airport

Airport Expansion

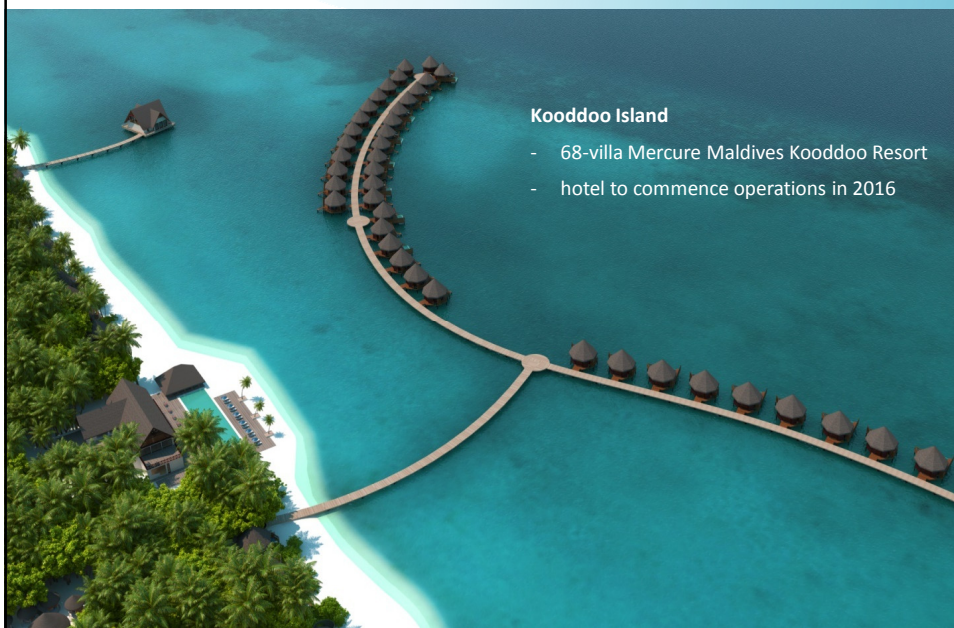
Kooddoo Island in Gaafu Alifu Atoll

- expansion of the Kooddoo domestic airport, including infrastructure work for the extension of its existing runway, slated for completion by 2016



17

Resort Development Projects

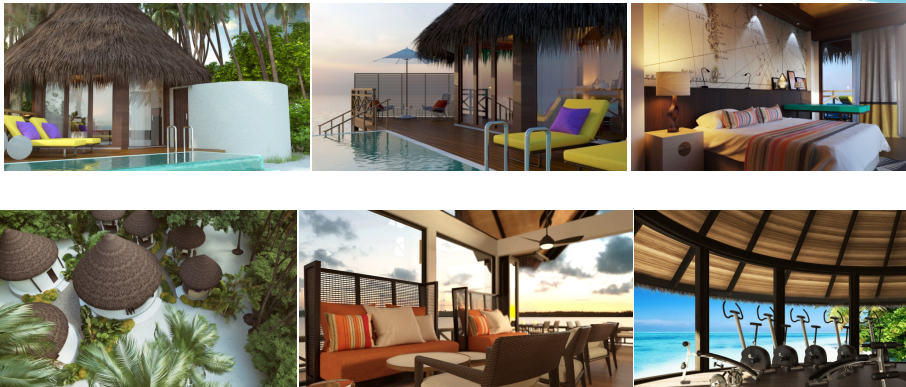


Kooddoo Island

- 68-villa Mercure Maldives Kooddoo Resort
- hotel to commence operations in 2016

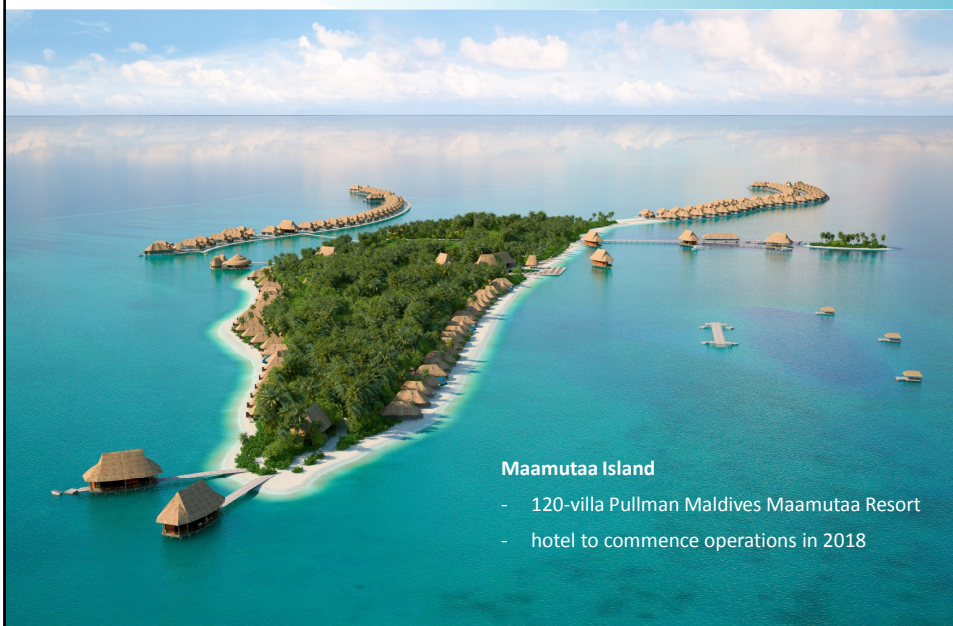
Mercure Maldives Kooddoo Resort

- Located in the south of the Maldives, Kooddoo Island is just a short 55 minutes flight from Male
- Mercure Kooddoo will be the only Maldivian beach resort directly accessible by domestic plane



19

Resort Development Projects



Maamutaa Island

- 120-villa Pullman Maldives Maamutaa Resort
- hotel to commence operations in 2018

4. Financial Highlights

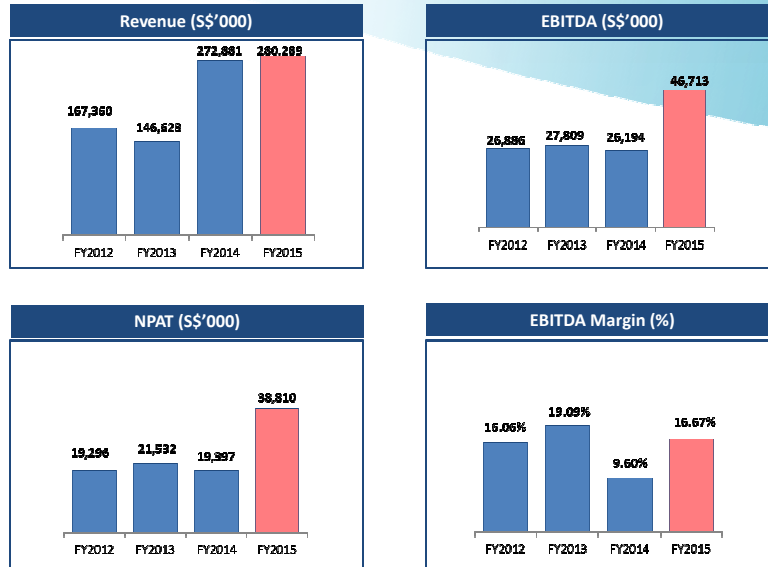


Key Financials

S\$ '000	FY2014 Audited	FY2015 Unaudited	Change	Remarks
Revenue	272,881	280,289	2.7%	• Growth in revenue due mainly to higher revenue recognition from ongoing projects
Gross profit	30,589	29,800	(2.6%)	• Decline in gross profit margin was due mainly to higher operating costs such as higher wages, labour levies, safety compliance costs and higher depreciation expenses as a result of increase in plant and machinery
Gross profit margin (%)	11.2	10.6%	(0.6ppt)	
Net profit after tax	19,397	38,810	100.1%	• Increase in net profit as a result of share of profit from the completion of Twin Waterfalls Executive Condominium
Basic EPS (cents)	11.1	16.5	48.6%	
Net gearing ratio (x)	0.27x	0.59x		• Increase in bank borrowings and issuance of the S\$50 million term notes

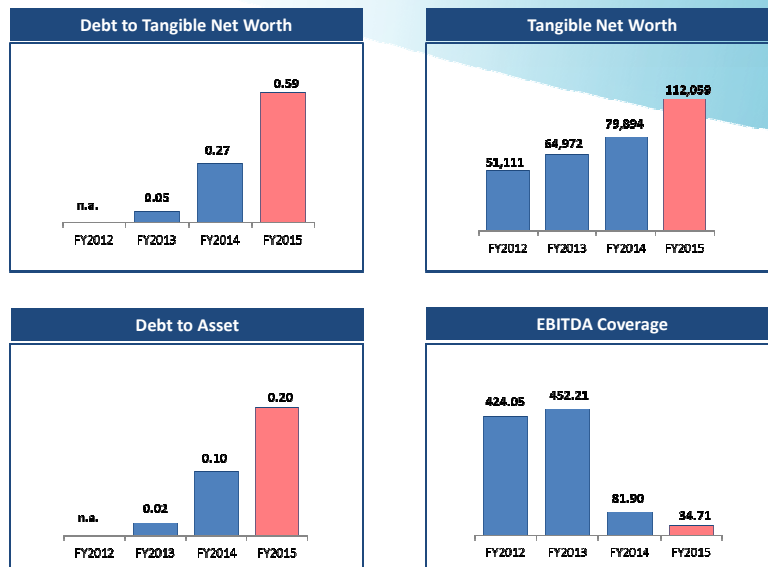


Financial Summary – Income Statement



23

Financial Summary – Key Financial Ratios



24

5. Outlook and Strategies



Outlook

Singapore Construction Industry

- The average construction demand according to the BCA's forecast for 2016 and 2017 is between S\$27 billion to S\$36 billion per annum ⁽¹⁾.
- The Government's property cooling measures is also anticipated to continue in 2016. Any further interest rate hikes by the banks will not bode well for buyer sentiment in the housing market. 2016 is thus likely to be another challenging year.
- As at 30 September 2015, Group's order book stood at S\$462 million.
- We remain confident of our ability to meet the challenges of the near future given our strong pipeline of construction projects which stretch to 2018.
- Going forward, we will put more emphasis on commercial and institutional property construction, particularly in the medical and healthcare sector given Singapore's ageing population

(1) Building and Construction Authority, "Public sector projects to sustain construction demand in 2015."
Available: http://www.bca.gov.sg/Newsroom/pr08012015_BCA.HTML



Outlook

The Maldives Tourism Industry ⁽²⁾

- **Strong demand for new resort construction as well as airport infrastructure to support the growing tourism industry**
 - **Traditional honeymoon and high-end tourists for luxury resorts will continue to grow. Recent years there has also been a steady rise in niche markets, such as family holidays, diving tours and conservation trips**
 - **Leading destination for luxury vacations, with one of the highest concentrations of high-end resorts in the world. Around a third of visitors spend more than USD5,000 in a single trip**
- From January to October 2015, tourist arrivals to the Maldives reached 1.02 million, registering a 1.3% growth over the same period in 2014. The country expects to receive 1.4 million visitors in 2015.
 - Asia Pacific currently accounts for around 50% of visitor arrivals (with China the number one source country) and Europe accounting for 42% of visitor arrivals.
 - The top ten tourists generating markets to-date are China, Germany, United Kingdom, Italy, India, Russia, France, Japan, Switzerland and Korea.

(2) <http://tourism.gov.mv/>



27

Strategies

Focus on projects with higher complexity and value-add for its building construction business

Generate higher profits and further raise business profile

Explore new business opportunities in property development in Singapore and other countries in the Asia Pacific region

Partner with well-established players to jointly undertake property development projects

Undertake hotel and resort development projects in Singapore, the Maldives and other countries

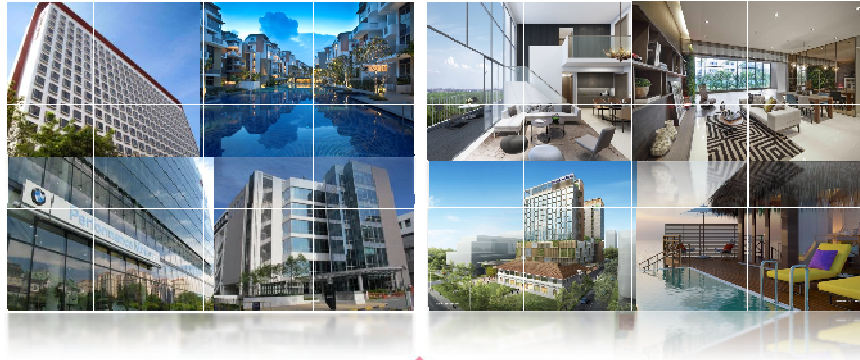
Provide more stable sources of cash flows and recurring income for future growth

Growth and expansion through joint ventures and acquisitions

Investment in businesses which are complementary to the Group, such as infrastructural works for the MRT



28



BUILDING A SUSTAINABLE FUTURE