



# SOUTHERN ALLIANCE MINING LTD.

NOVEMBER 2022





# Key Investor Takeaways

## Investing into the future with strategic diversification and expansion



**Supportive  
macroeconomic  
prospects for iron ore  
and gold**

- Strong demand support from China due to **heavy infrastructure investments** by the government to revive the economy.
- Iron Ore prices are expected to increase due to stronger demand from major economies.
- **Gold's resilience has historically remained high under recessionary pressure** and is expected to outperform most other commodities.



**Expansion,  
diversification and  
optimization strategy**

- The exploration activities undertaken has **more than doubled the Group's iron ore resources from 6.3Mt as of 31 July 2021 to 15.7Mt as of 31 July 2022.**
- An extensive exploration plan for **gold mining at the Tenggaroh Mine** is underway.
- **A new centralised 550-600 TPH crushing facility** is being commissioned to improve efficiency of our mining operations

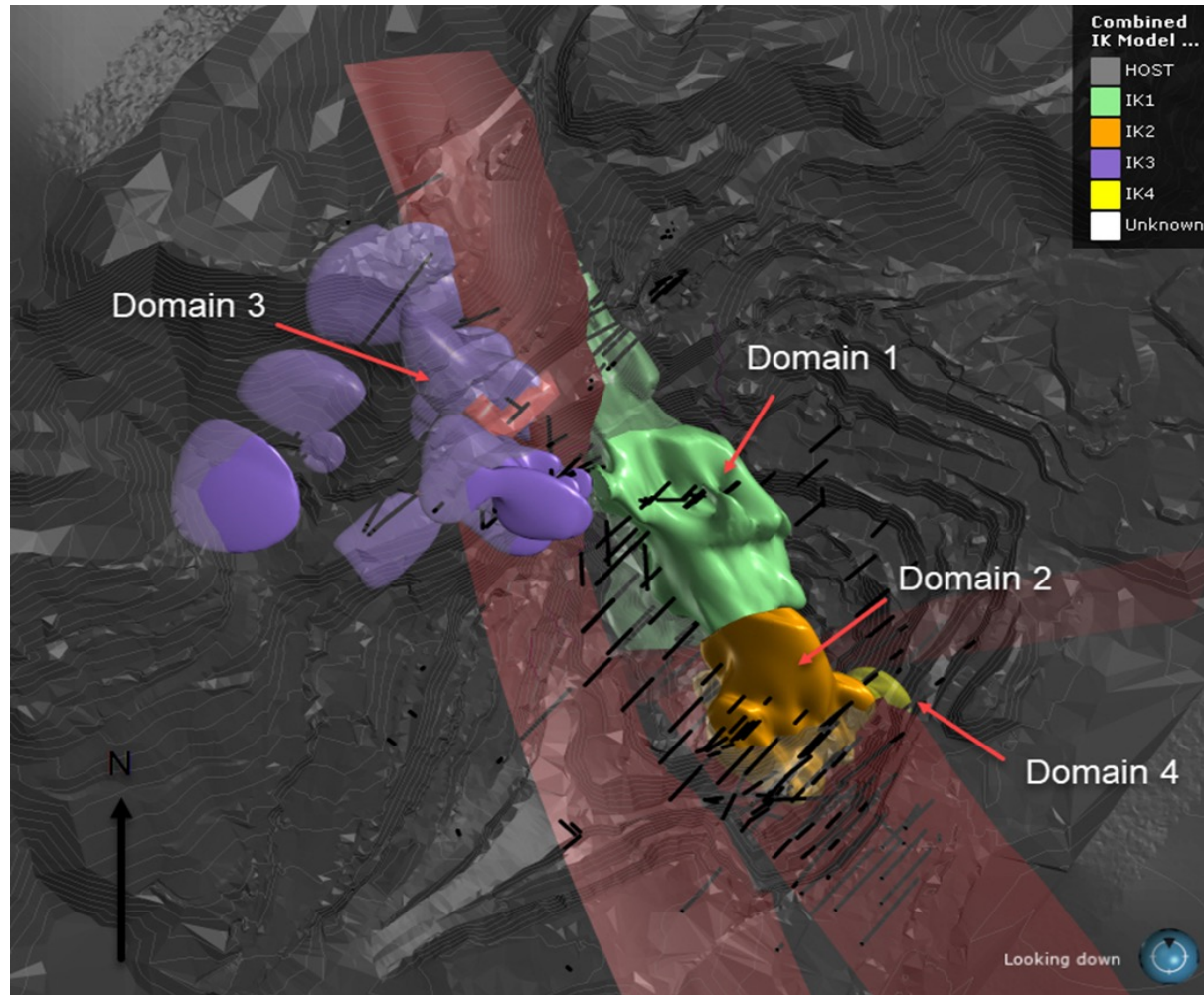


**Investing today to  
generate sustainable  
earnings  
for the future**

- FY2022 Group revenue amounted to RM178.7 million (vs. RM387.4 million in FY2021)
- The **drop in revenue is due to higher investment in overburden stripping** in the southern extension of the Chaah Mine, in line with the stripping schedule.
- **Strong net asset position** of RM358.2 million to support future growth.

# Exploration History & Results

Our investments have yielded positive results



2.5x increase in mineral resources

Since IPO, the Group's investment in the ore extension drilling program, amounting to RM7.2 million (S\$2.3 million), has yielded significant positive results with our new Mineral Resources being 2.5 times higher than our Minerals Resources as at 31 July 2021



# STRATEGY AND OUTLOOK

A wide-angle photograph of a large-scale mining operation. The scene is dominated by a deep, dark pit filled with earth and rocks. In the foreground, a white truck is parked on the left, and several yellow excavators are positioned on the right, actively working on the ground. The background features a massive, layered rock face, likely a quarry or open-pit mine, under a clear blue sky. The overall atmosphere is industrial and powerful.



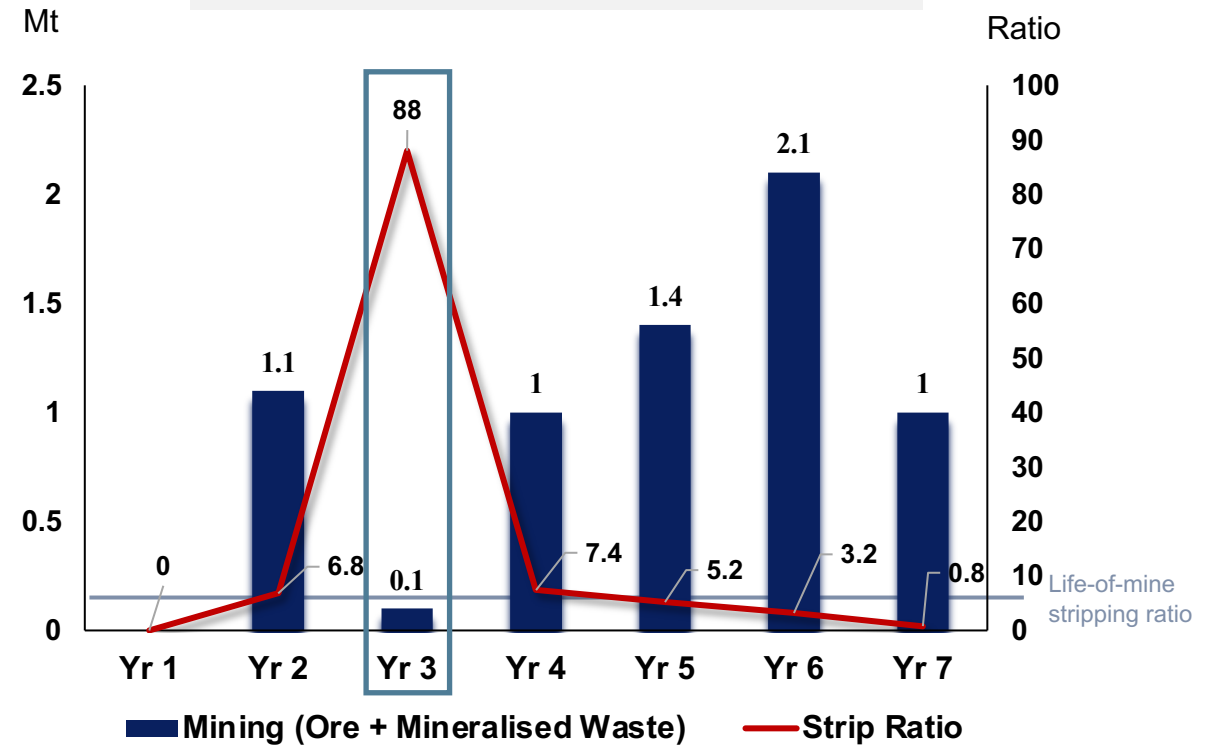
# Strategic Growth Plans

## Investment in exploration activities more than doubled iron ore resources

Extension to Existing Iron Ore Body at the Chaah Mine



Expected Stripping Ratio as per the IQPR Report



The higher investment in overburden stripping has not only **outlined a +150m strike extension to the southern zone** but has allowed the Group to **gain access to future resources**. As per the IQPR report dated 28 September 2022, the **Group's iron ore resources have increased to 15.7Mt, more than double compared to FY2021**. Furthermore, the Group is also considering various mining techniques for the northern extension zone.



# Strategic Growth Plans

## Optimization and investment into other metals to generate sustainable earnings

New 550-600 tonne per hour (TPH) crushing facility



In FY2022, the Group commenced the **construction of a new crushing facility** linked directly to the ball mill in order to **centralise the entire processing operation**. This is **expected to generate reach higher economies of scale and improvement in efficiency**.

Narrowed down exploration activities at gold mine to key mineable areas



In early 2022, the Group got the **official approval for exploration work at the Tenggara Gold Mine**. The Group has now been able to **narrow down into the key mineable areas** through extensive sampling, mapping, and exploration. Such **diversification efforts** are to reduce the Group's sensitivity to a single commodity.



# THANK YOU

For more information, please contact: Shivam Saraf / Kamal Samuel / Urvija Diwan at [shivam@financialpr.com.sg](mailto:shivam@financialpr.com.sg) / [kamal@financialpr.com.sg](mailto:kamal@financialpr.com.sg) / [urvija@financialpr.com.sg](mailto:urvija@financialpr.com.sg). Tel: +65 6438 2990

This presentation has been reviewed by the Company's Sponsor, PrimePartners Corporate Finance Pte. Ltd. (the "Sponsor"). It has not been examined or approved by the Singapore Exchange Securities Trading Limited (the "Exchange") and the Exchange assumes no responsibility for the contents of this document, including the correctness of any of the statements or opinions made or reports contained in this document. The Sponsor has also not drawn on any specific technical expertise in its review of this announcement.

The contact person for the Sponsor is Mr Shervyn Essex, 16 Collyer Quay, #10-00 Collyer Quay Centre, Singapore 049318, [sponsorship@ppcf.com.sg](mailto:sponsorship@ppcf.com.sg).