

FIRST TO FLY
DREAMLINER
787-10



86TH SIA BUSINESS MEETING
Q4 and FY2017-18 Results
17 May 2018

THE PARENT AIRLINE Q4 AND FY17/18 RESULTS

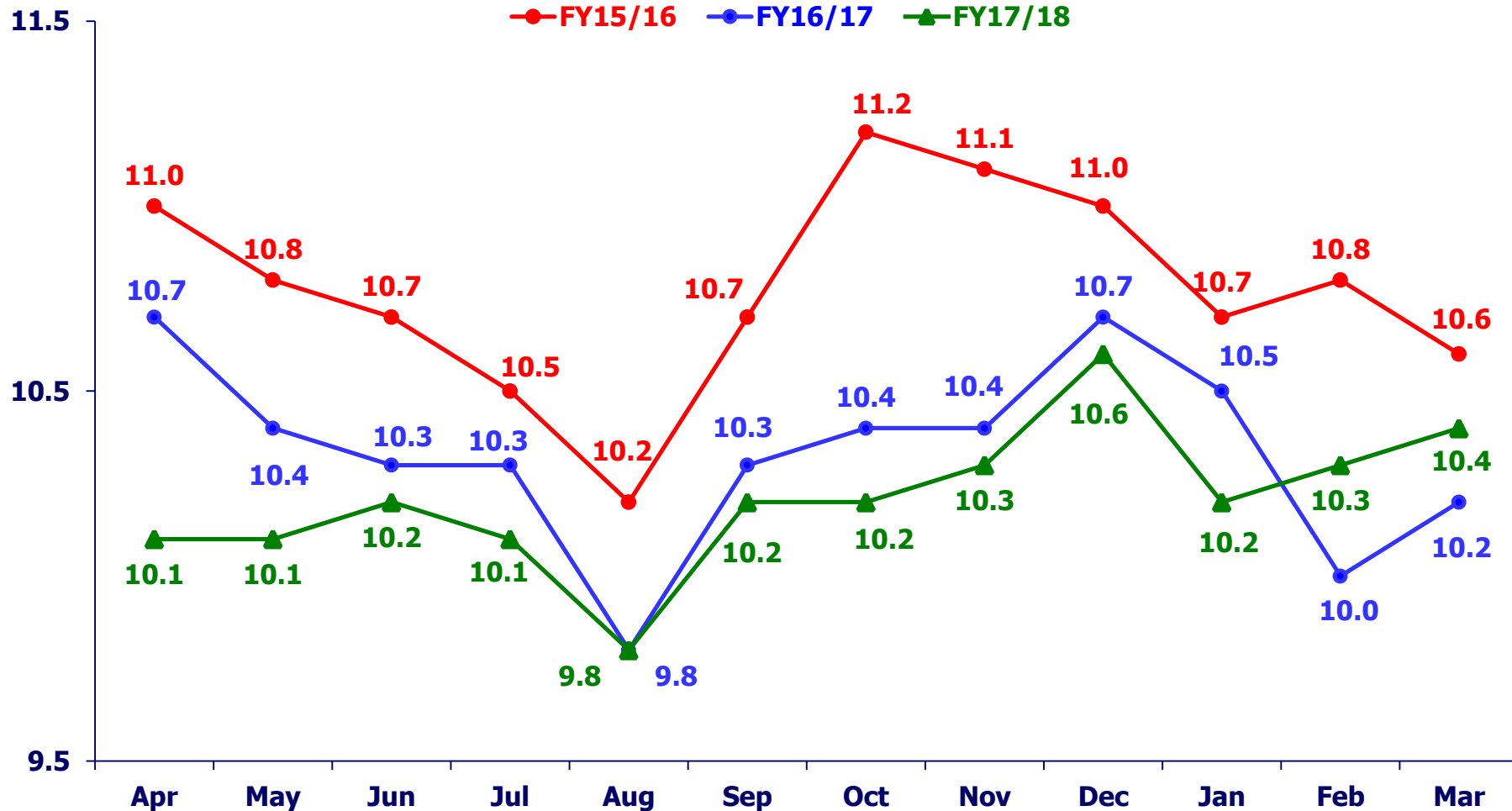
THE PARENT AIRLINE COMPANY OPERATING PERFORMANCE

	Q4 FY17/18	% Change	FY17/18	% Change
Available Seat-KM (million)	29,074	+0.8	118,127	+0.4
Revenue Pax-KM (million)	23,587	+1.4	95,855	+3.2
Passenger Load Factor (%)	81.1	+0.5 pt	81.1	+2.1 pts
Passenger Yield (¢/pkm)	10.3	+1.0	10.2	-1.0
Revenue per ASK (¢/ask)	8.4	+2.4	8.3	+1.2
Passenger Unit Cost (¢/ask)	8.7	-1.1	8.4	+1.2
Passenger Unit Ex-Fuel Cost (¢/ask)	6.0	-3.2	5.9	+1.7
Passenger Breakeven Load Factor (%)	84.5	-1.8 pts	82.4	+1.8 pts

THE PARENT AIRLINE COMPANY OPERATING PERFORMANCE

Monthly Pax Yields

(¢/pkm)



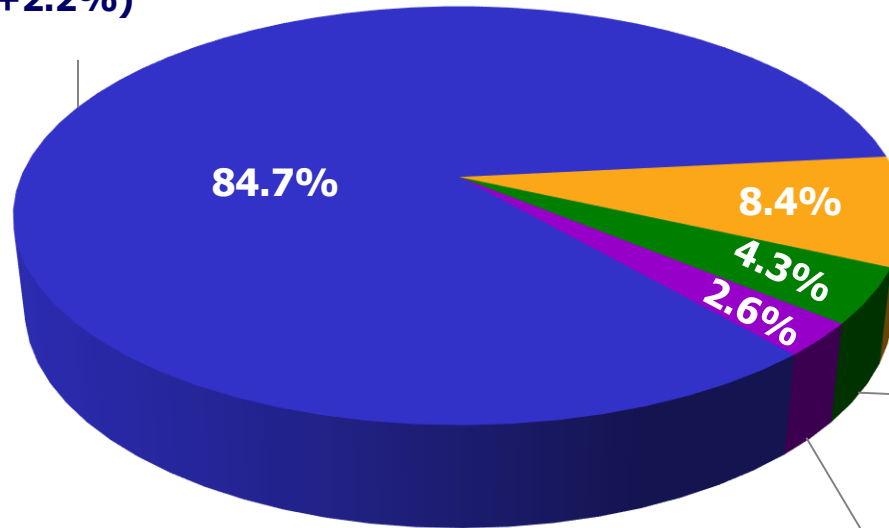
THE PARENT AIRLINE COMPANY RESULTS

	Q4 FY17/18 \$million	Better/ (Worse) \$million	FY17/18 \$million	Better/ (Worse) \$million
Total Revenue	2,934	221	11,584	490
Total Expenditure	2,797	(43)	10,881	(173)
- <i>Net Fuel Cost</i>	<i>771</i>	<i>(25)</i>	<i>2,971</i>	<i>(77)</i>
<i>Fuel Cost</i>	<i>835</i>	<i>(98)</i>	<i>3,044</i>	<i>(419)</i>
<i>Fuel Hedging Gain</i>	<i>(64)</i>	<i>73</i>	<i>(73)</i>	<i>342</i>
- <i>Ex-fuel Cost</i>	<i>2,026</i>	<i>(18)</i>	<i>7,910</i>	<i>(96)</i>
Operating Profit	137	178	703	317
Operating Profit Margin (%)	4.7	6.2 pts	6.1	2.6 pts

THE PARENT AIRLINE COMPANY REVENUE BREAKDOWN

FY17/18 (\$'M)

Passenger Flown Revenue
9,816.6
(+209.7, +2.2%)



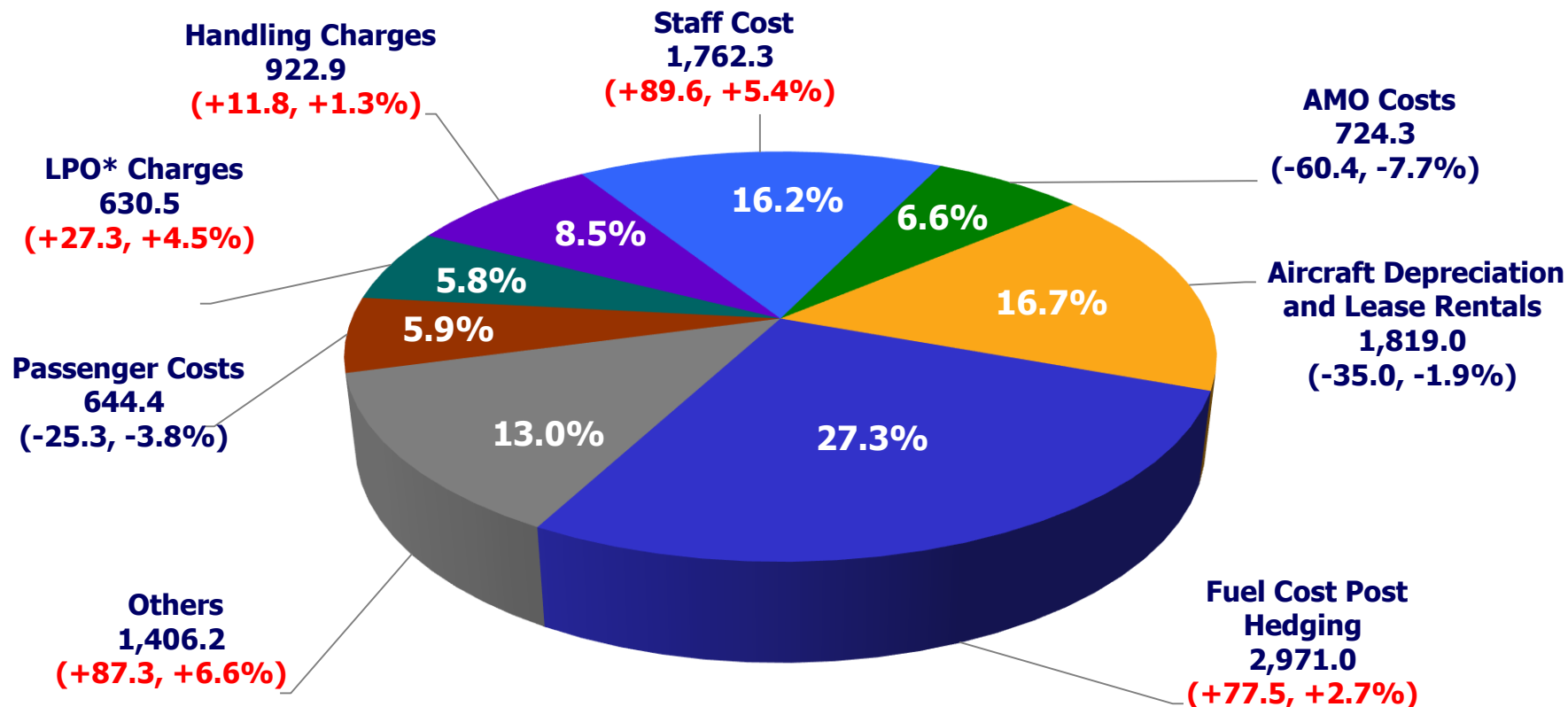
**Bellyhold
Revenue from
SIA Cargo**
975.1
(+71.7, +7.9%)

**Passenger Other
Revenue**
493.4
(+83.1, +20.3%)

Others
298.7
(+125.1, +72.1%)

THE PARENT AIRLINE COMPANY COST COMPOSITION

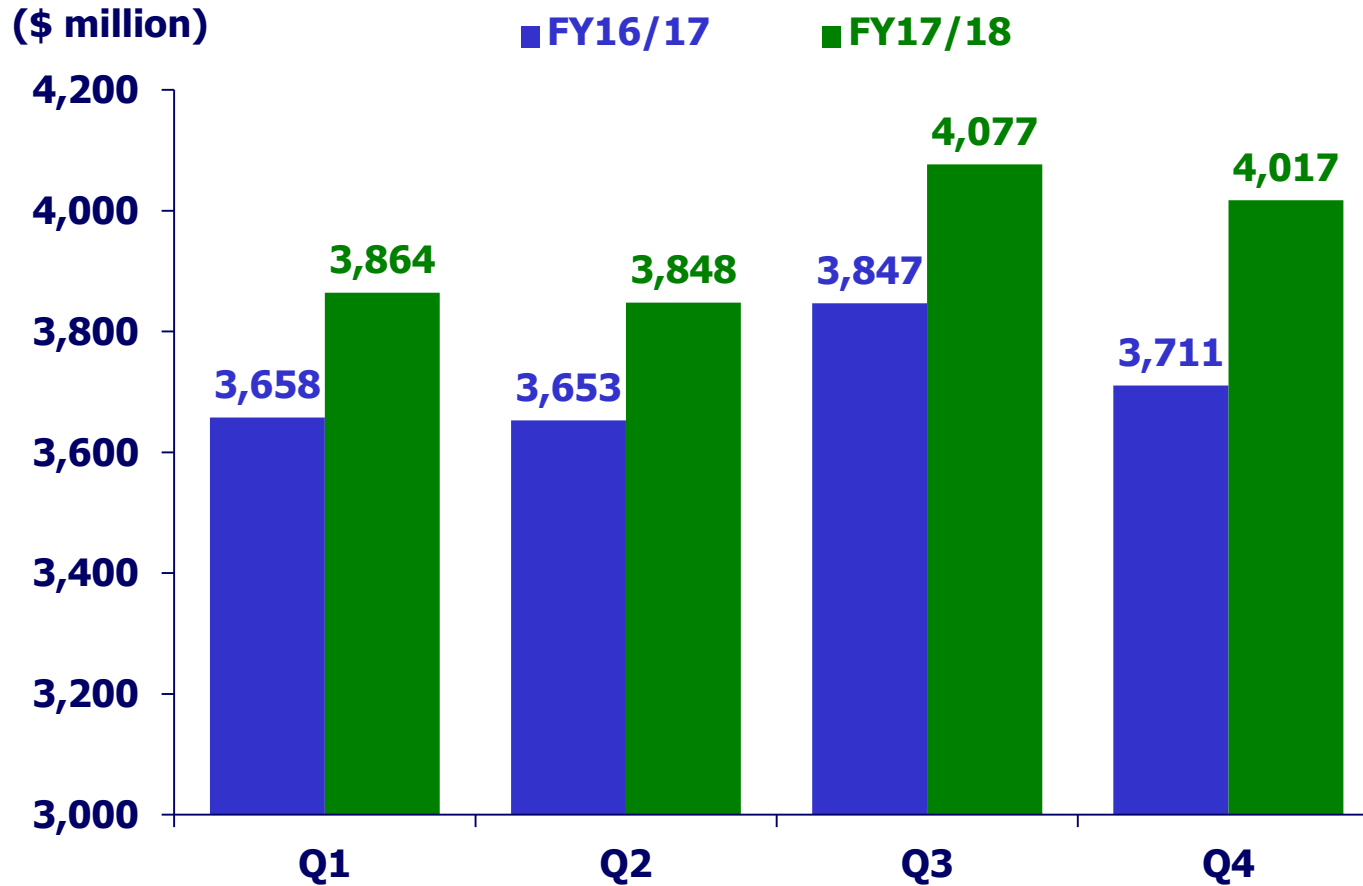
FY17/18 (\$'M)



**Landing, Parking and Overflying*

SIA GROUP Q4 AND FY17/18 RESULTS

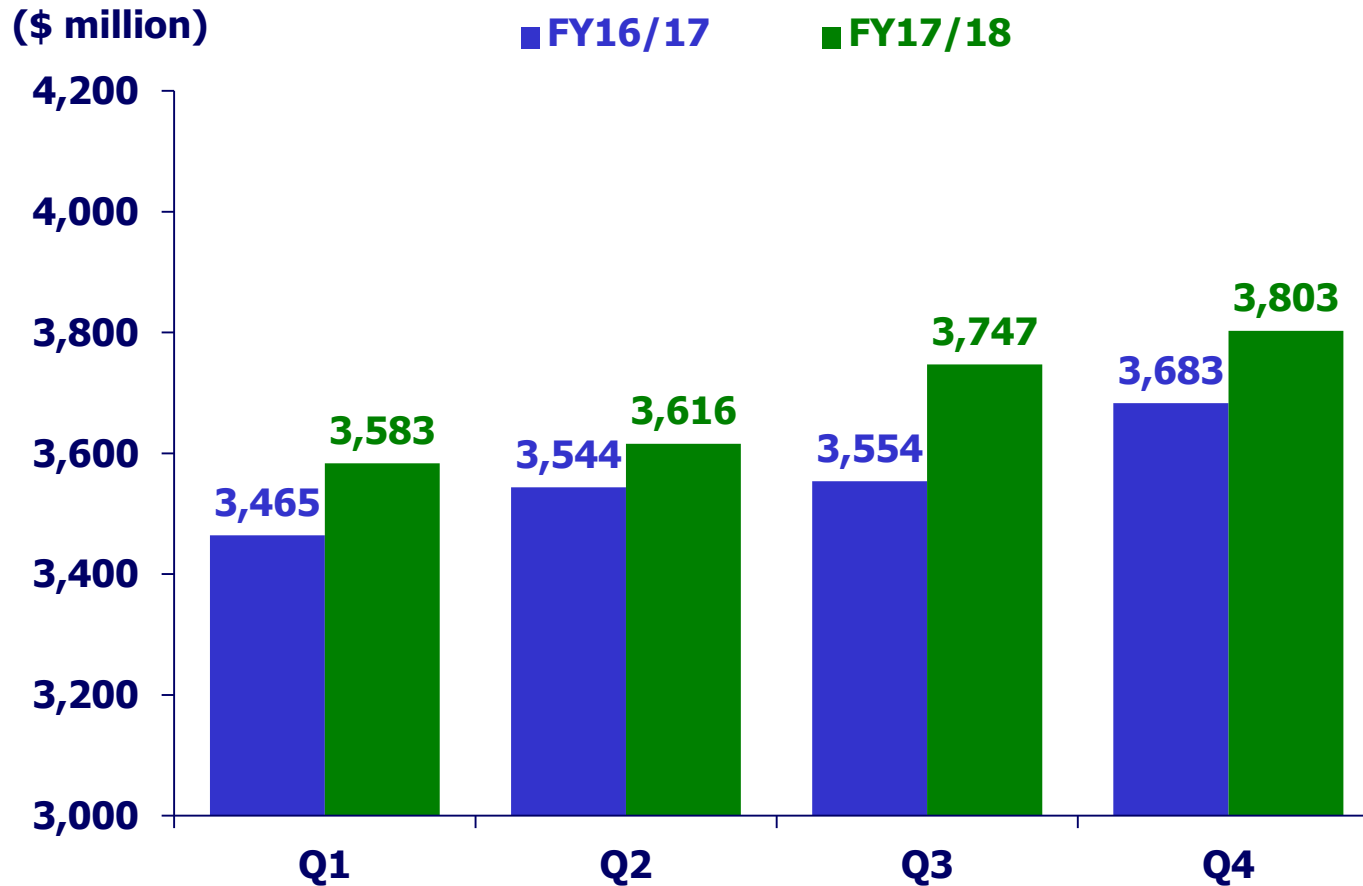
GROUP REVENUE



**FY17/18
Revenue
\$15,806M**

Year-on-Year
↑ **\$937M
+6.3%**

GROUP EXPENDITURE

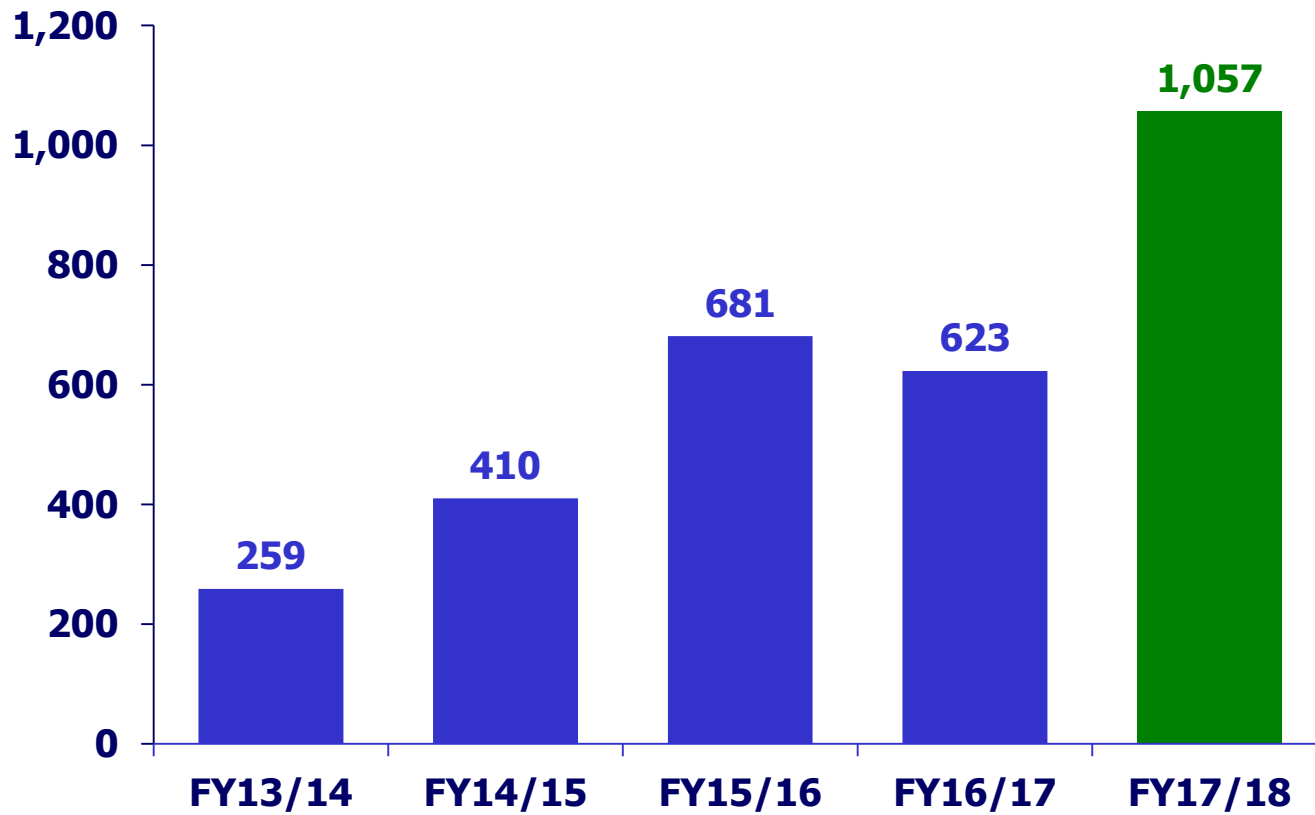


**FY17/18
Expenditure
\$14,749M**

Year-on-Year
 **\$503M
+3.5%**

GROUP OPERATING PROFIT

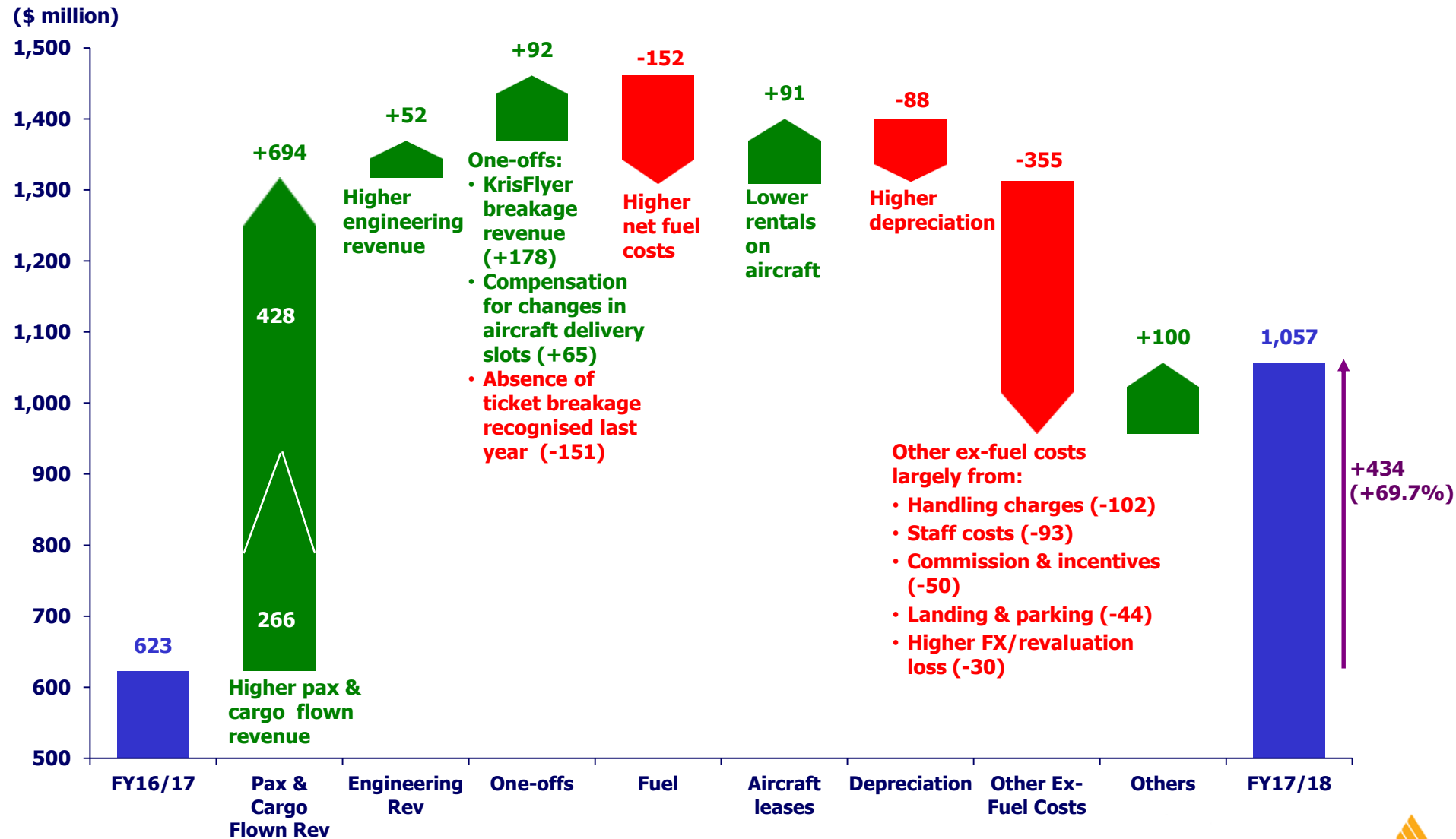
(\$ million)



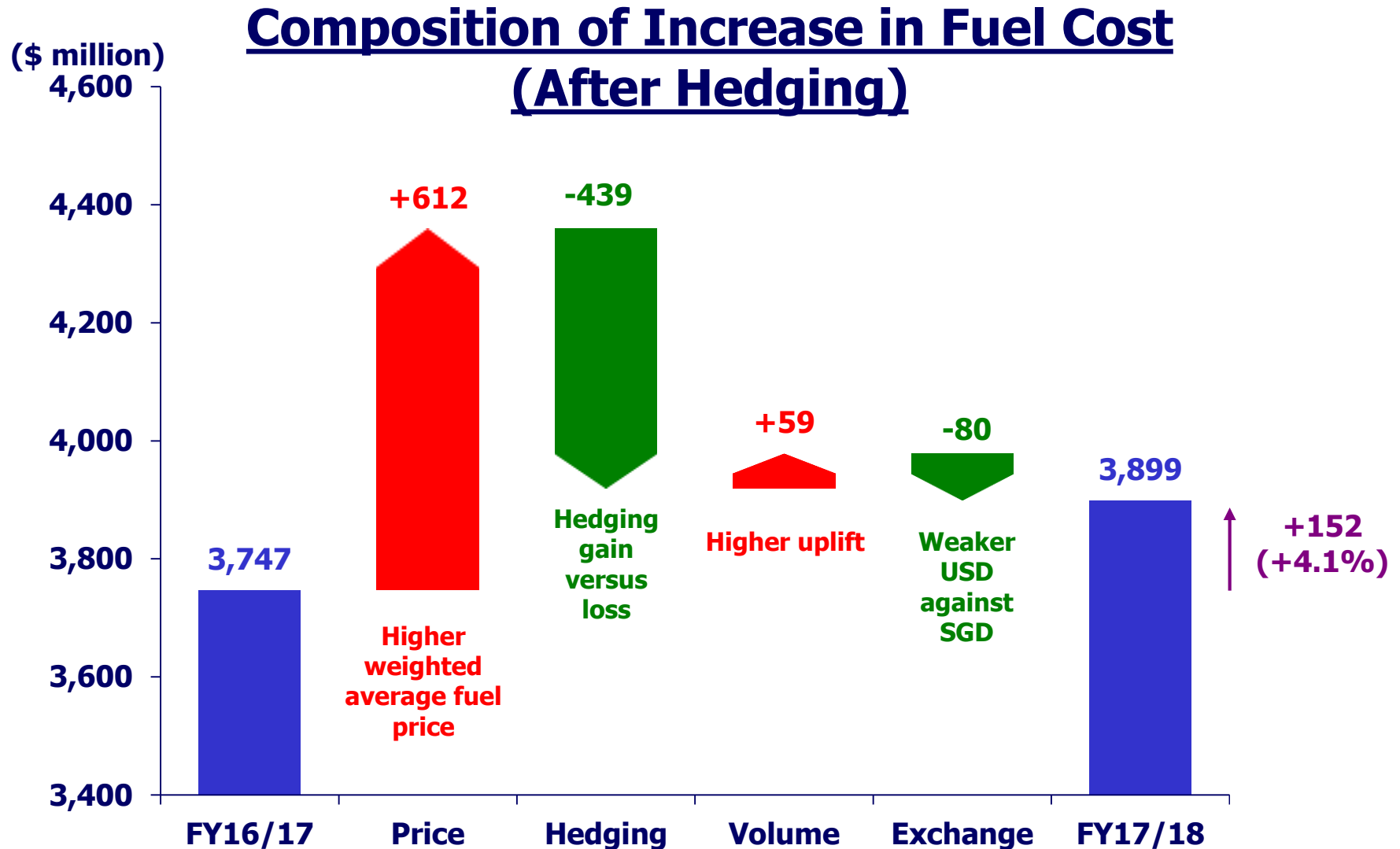
**FY17/18
Op Profit
\$1,057M**

Year-on-Year
 **\$434M
+69.7%**

GROUP OPERATING PROFIT



GROUP FUEL EXPENDITURE

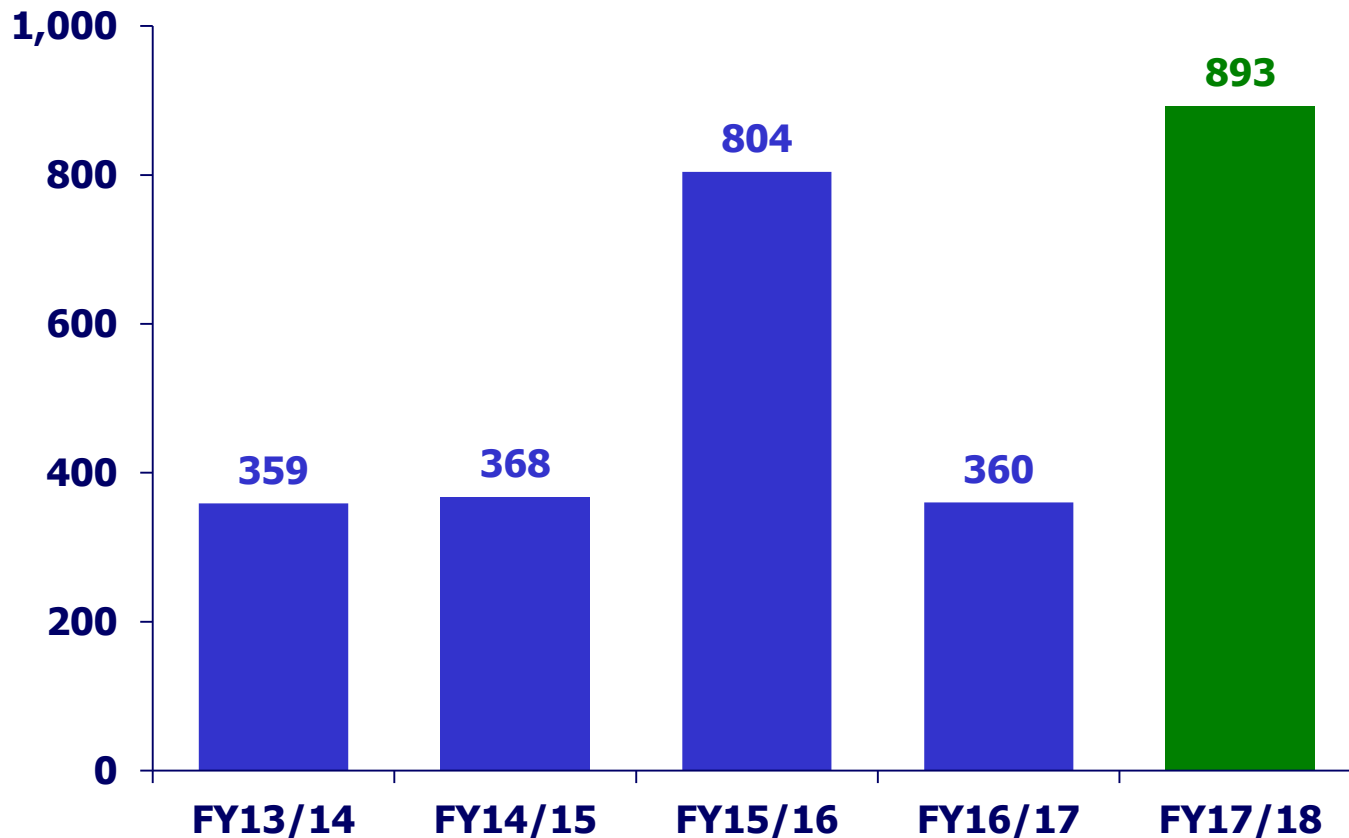


CONTRIBUTION TO GROUP OPERATING PROFIT

<u>(\$ million)</u>	<u>FY17/18</u>	<u>FY16/17</u>	<u>Change</u>	<u>% Change</u>
Singapore Airlines	703	386	317	+ 82.1
SilkAir	43	101	-58	- 57.4
Scoot	77	67	10	+ 14.9
SIA Cargo	148	3	145	n.m.
SIAEC	76	72	4	+ 5.6

GROUP PROFIT ATTRIBUTABLE TO OWNERS OF PARENT

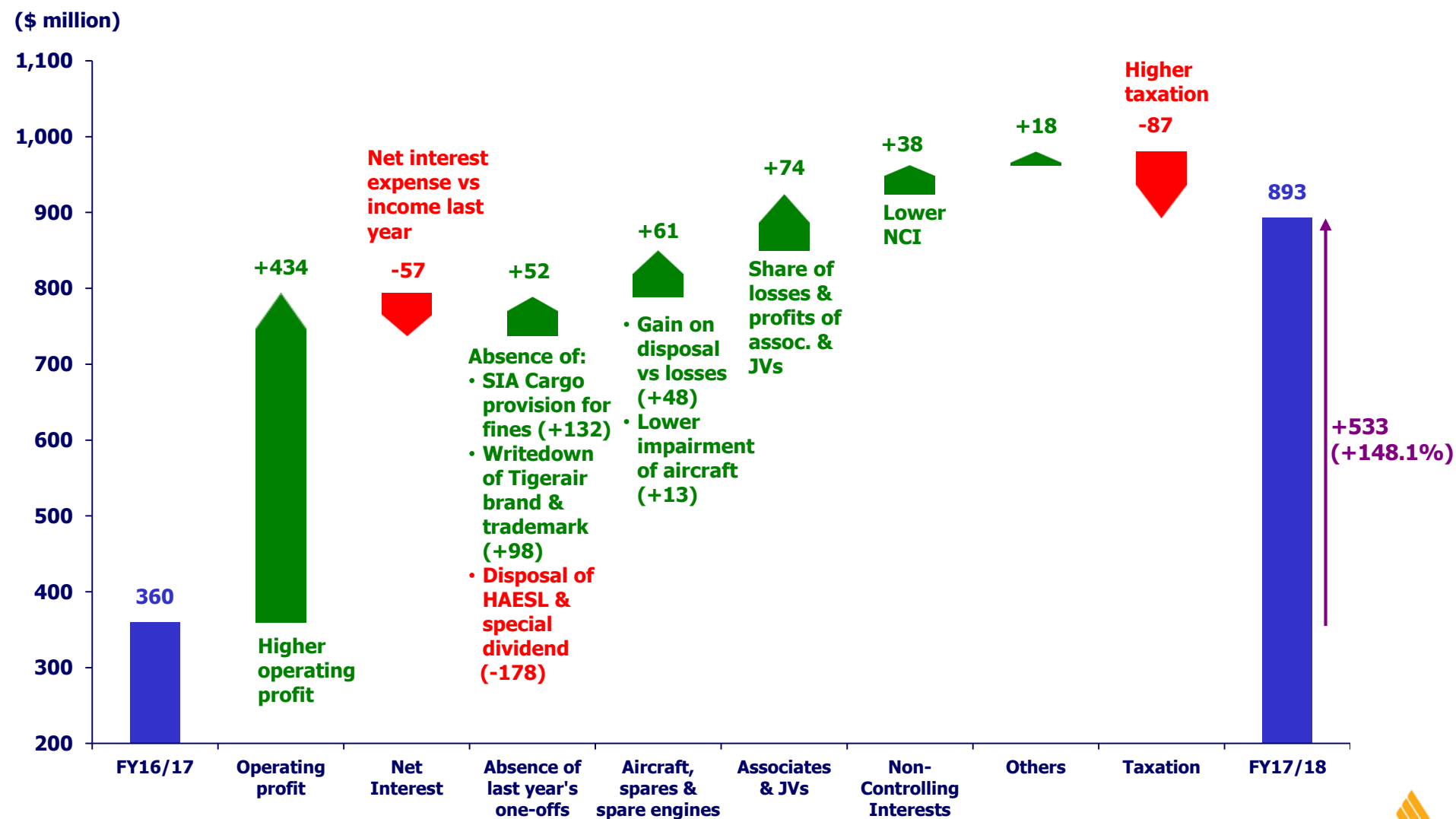
(\$ million)



**FY17/18
Net Profit
\$893M**

**Year-on-Year
↑ \$533M
+148.1%**

GROUP PROFIT ATTRIBUTABLE TO OWNERS OF PARENT



DIVIDENDS – FY17/18

	<u>FY17/18</u>	<u>FY16/17</u>
Earnings Per Share (¢)	75.5	30.5
Interim Dividend Per Share (¢)	10.0	9.0
Proposed Final Dividend Per Share (¢)	30.0	11.0
Total Dividend Per Share (¢)	40.0	20.0

FIRST TO FLY
DREAMLINER
787-10



SINGAPORE
AIRLINES

THANK YOU