



# **ANNUAL GENERAL MEETING 2019**

# Table of Contents



**Corporate Overview**



**Core Business**



**Corporate Structure**



**Financial Overview**

# CORPORATE OVERVIEW

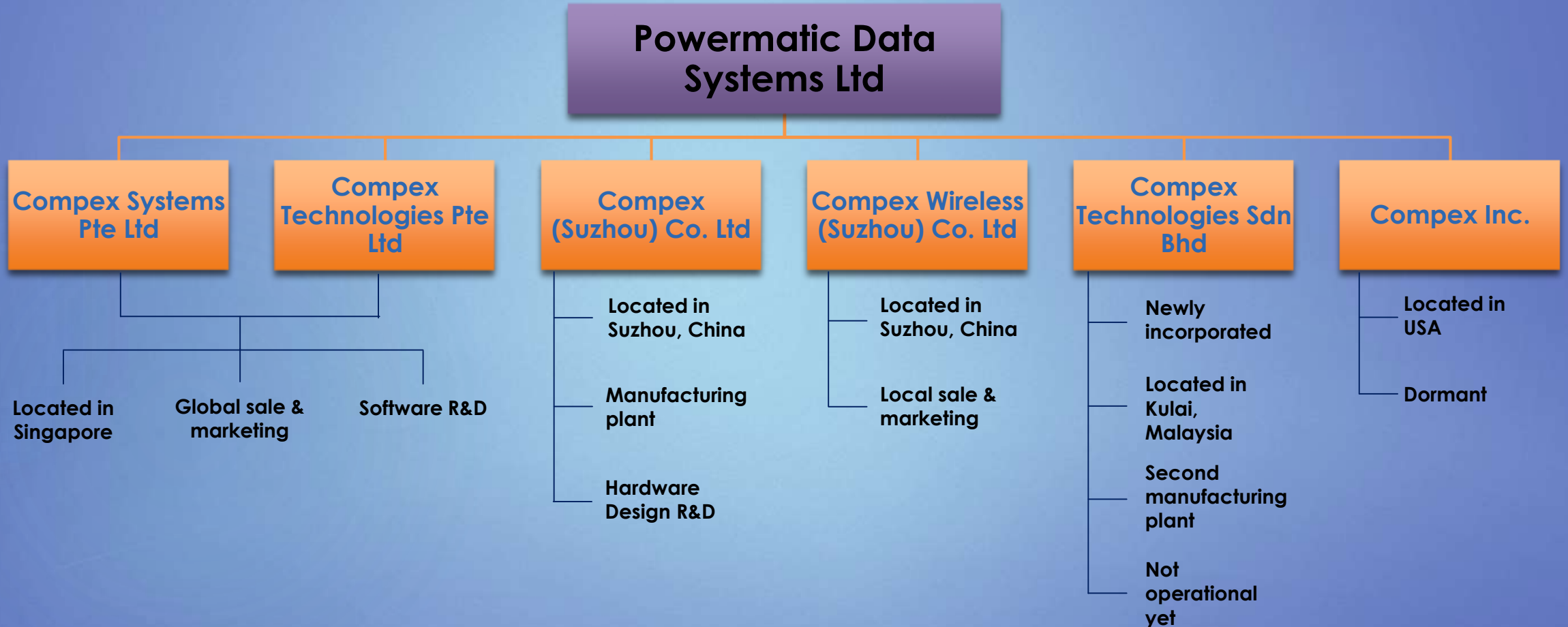
# POWERMATIC DATA SYSTEMS LTD

- ▶ **Incorporated in 1989 , listed on SGX since 1992.**
- ▶ **Operates under two main segments:**
  - 1. Wireless Connectivity Products segment**
    - Core Business
    - Run by subsidiaries under the Compex name
  - 2. Property Leasing and Maintenance segment**
    - Manage by holding company Powermatic Data Systems Limited

A low-angle photograph of a modern blue glass skyscraper. The building's facade is composed of blue-tinted glass panels and white structural elements. Several circular air conditioning units are visible on the side of the building. A large, leafy green tree is in the foreground on the right side, partially obscuring the building. The sky is a pale, overcast grey.

# CORPORATE STRUCTURE

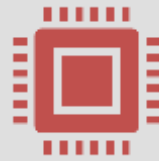
# CORPORATE STRUCTURE



# CORE BUSINESS



# CORE BUSINESS & FOCUS



Provide in depth value-add services, including consultations, design services, engineering works, with a specialized backend manufacturing in the area of wireless communications.



Grow and focus on segments of market such as IOT, Industrial PC, and transportations etc. which have growing needs for wireless in their applications.



# WHAT WE DO



## **Product Design & Manufacturing**

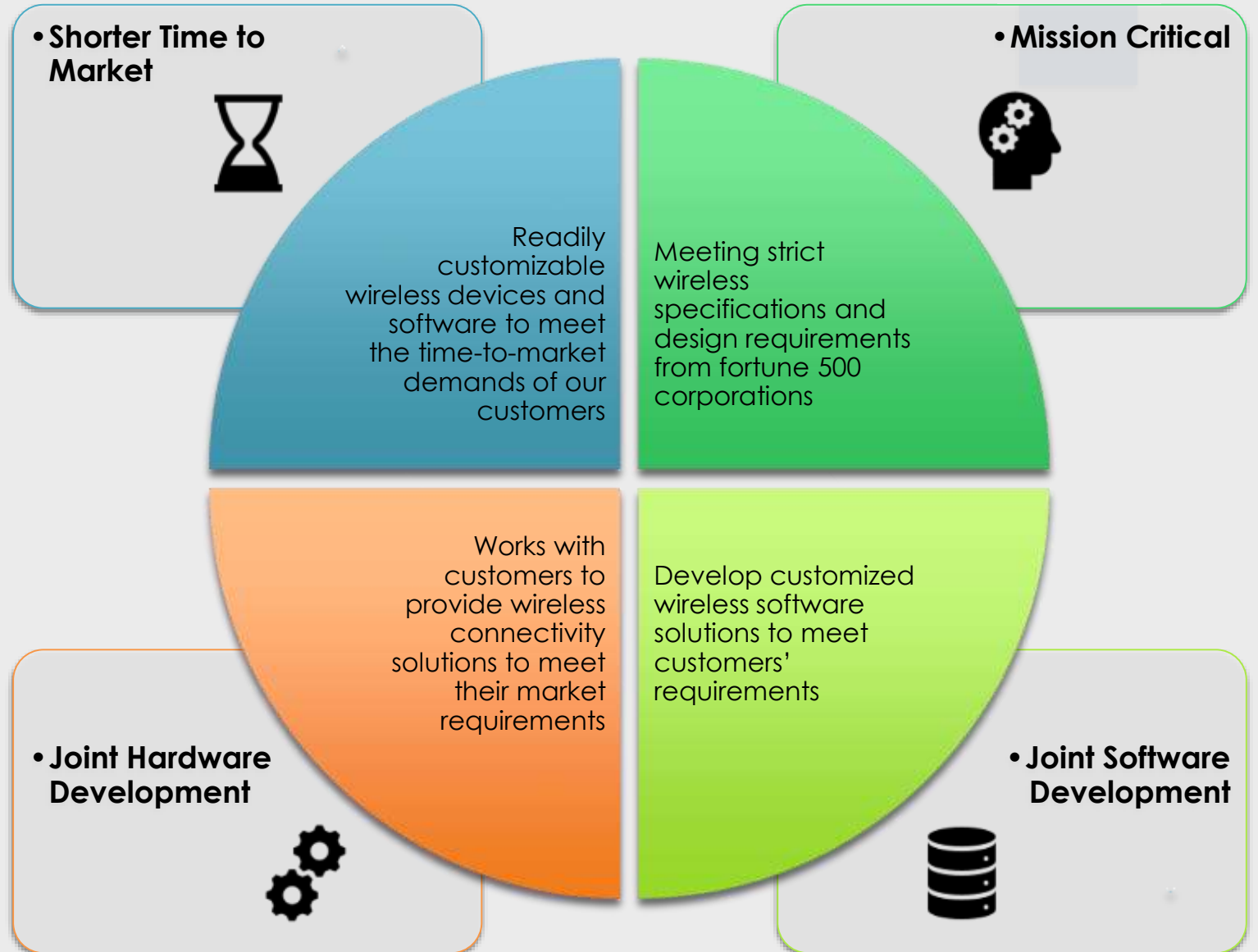
Provide design concepts, prototyping and manufacturing services to meet customers' specific requirements



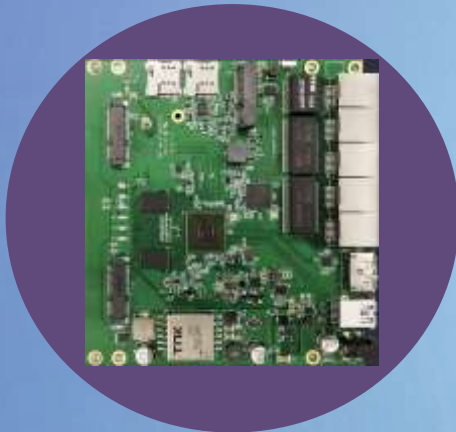
## **Ready-To-Go Solutions**

We provide readily available solutions to integrate into customers' design requirements

# OUR SOLUTIONS



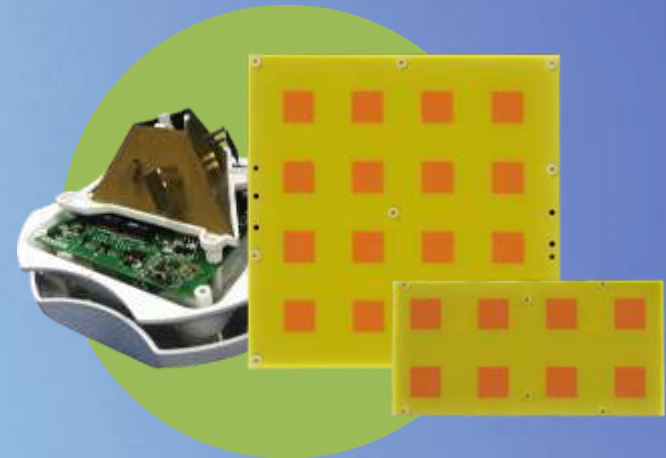
# PRODUCT RANGE



**Wireless Embedded  
Boards**



**Wireless Radio Modules**



**Wireless Antennas**

# PRODUCT APPLICATIONS

**Healthcare**  
-Medical Devices



**Security Industry**  
-uCPE Edge Router  
-Public Safety Vehicles  
-Indoor and outdoor AP



**Home Automation**  
-Smart Home Automation



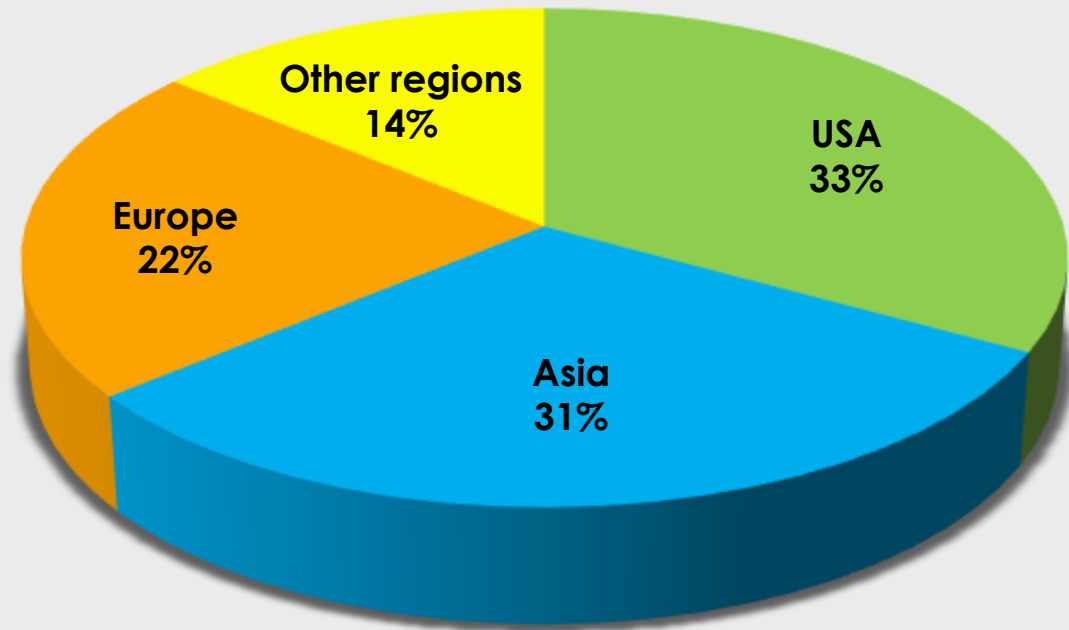
**Transportation**  
-Passenger WiFi  
-Aviation AP  
-Bus Router



**Industrial**  
-Factory automation  
-Heavy Machinery  
-Testing Tool



# OUR MARKET





# FINANCIAL OVERVIEW



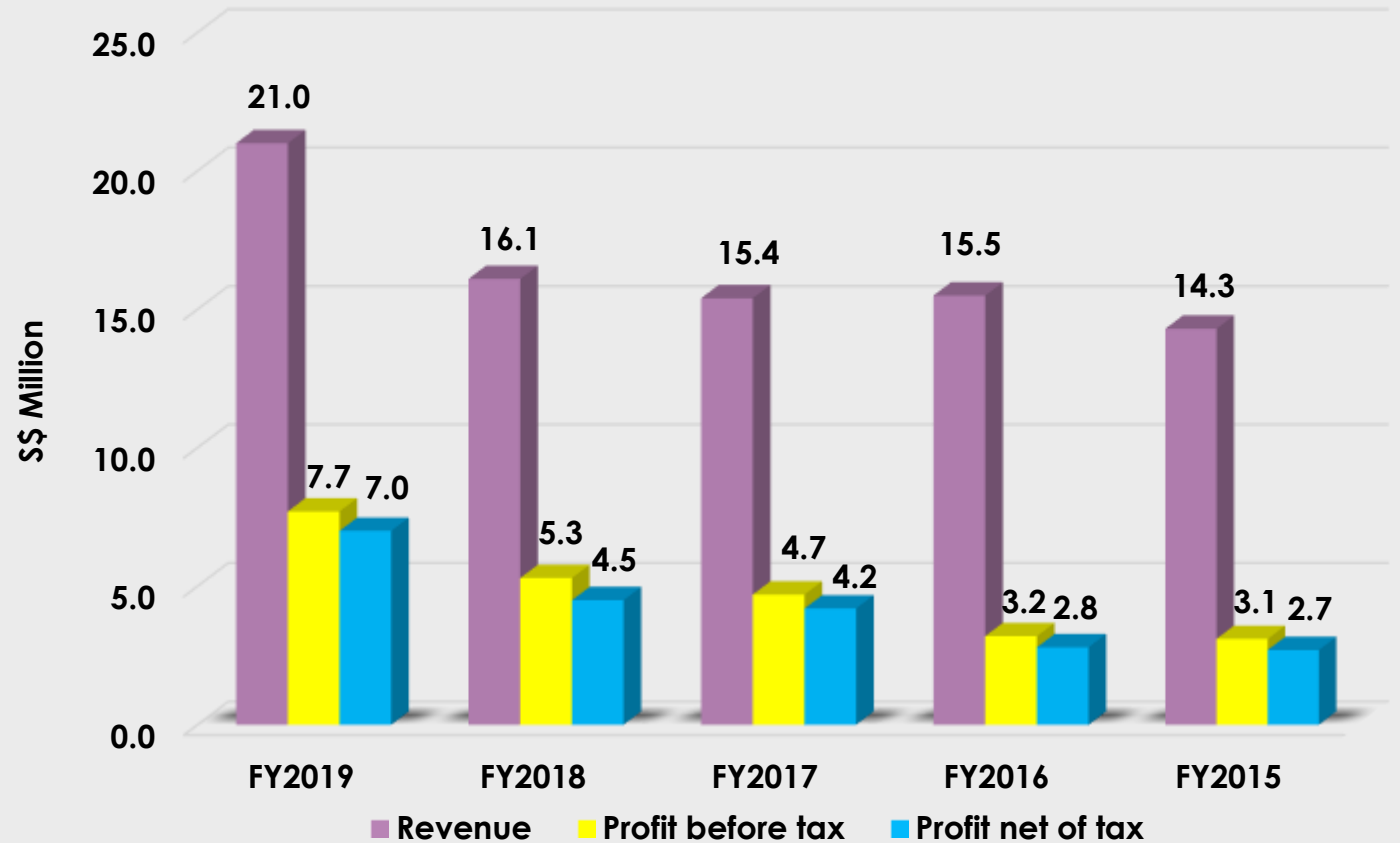
# KEY FINANCIAL INDICATORS

## – FY2019

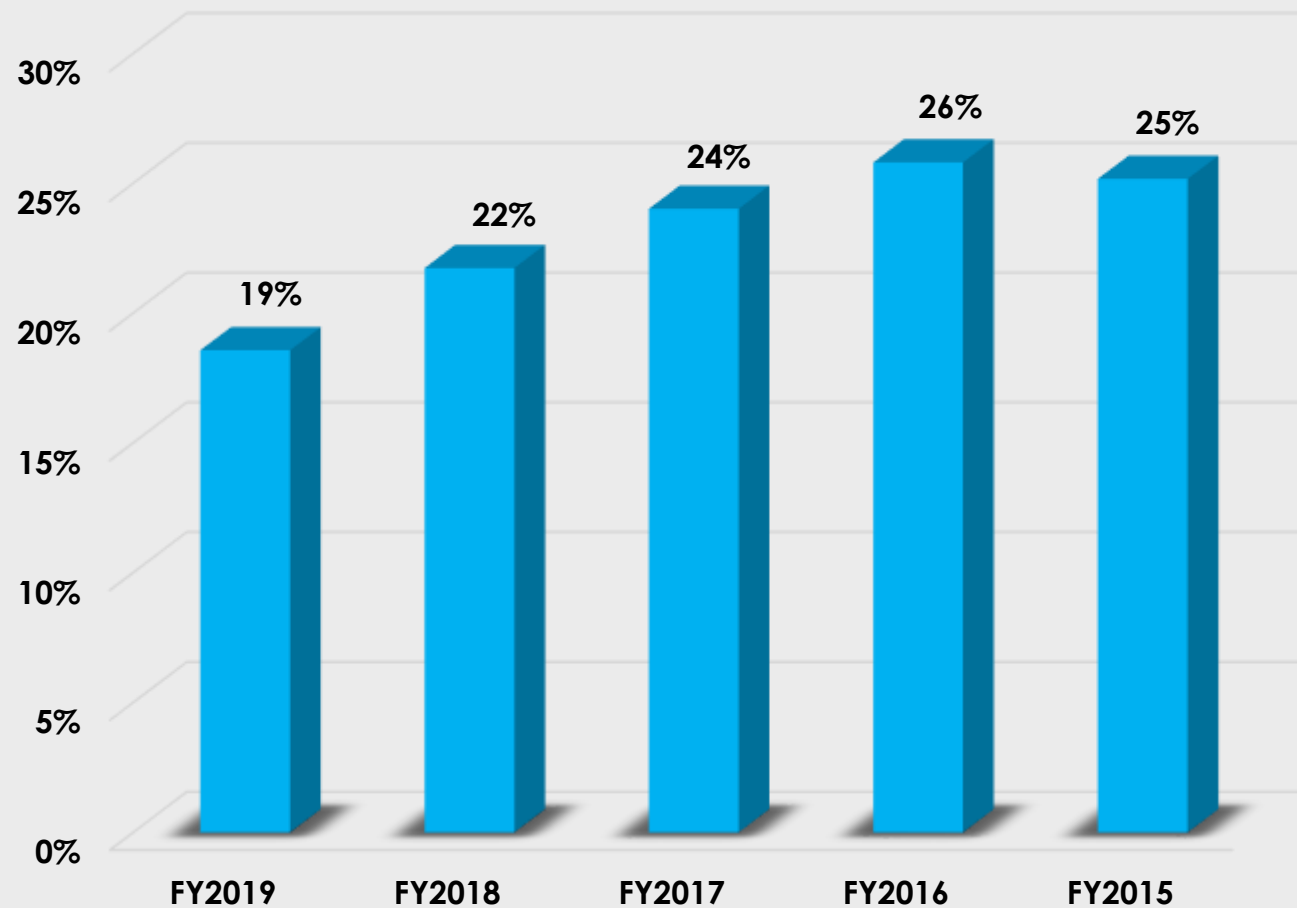
	S\$ Million	S\$	Vs FY2018
<b>Revenue</b>	<b>21.0</b>		+30%
<b>Gross Profit</b>	<b>9.8</b>		+21%
<b>Profit from leasing of property</b>	<b>0.5</b>		-10%
<b>Profit before tax</b>	<b>7.7</b>		+46%
<b>Profit, net of tax</b>	<b>7.0</b>		+55%
<b>Cash and cash equivalent</b>	<b>35.1</b>		+29%
<b>Earnings per share</b>		0.20	+55%
<b>Net asset per share</b>		1.68	+7%
<b>Adjusted net asset per share (investment property at fair value)</b>		2.14	+8%
<b>Dividend per share</b>		0.08	+14%
<b>Fair value of investment property</b>	35.0	33.70	+4%



# 5-YEAR PROFITABILITY CHART



# OPERATING EXPENSES AS % OF REVENUE

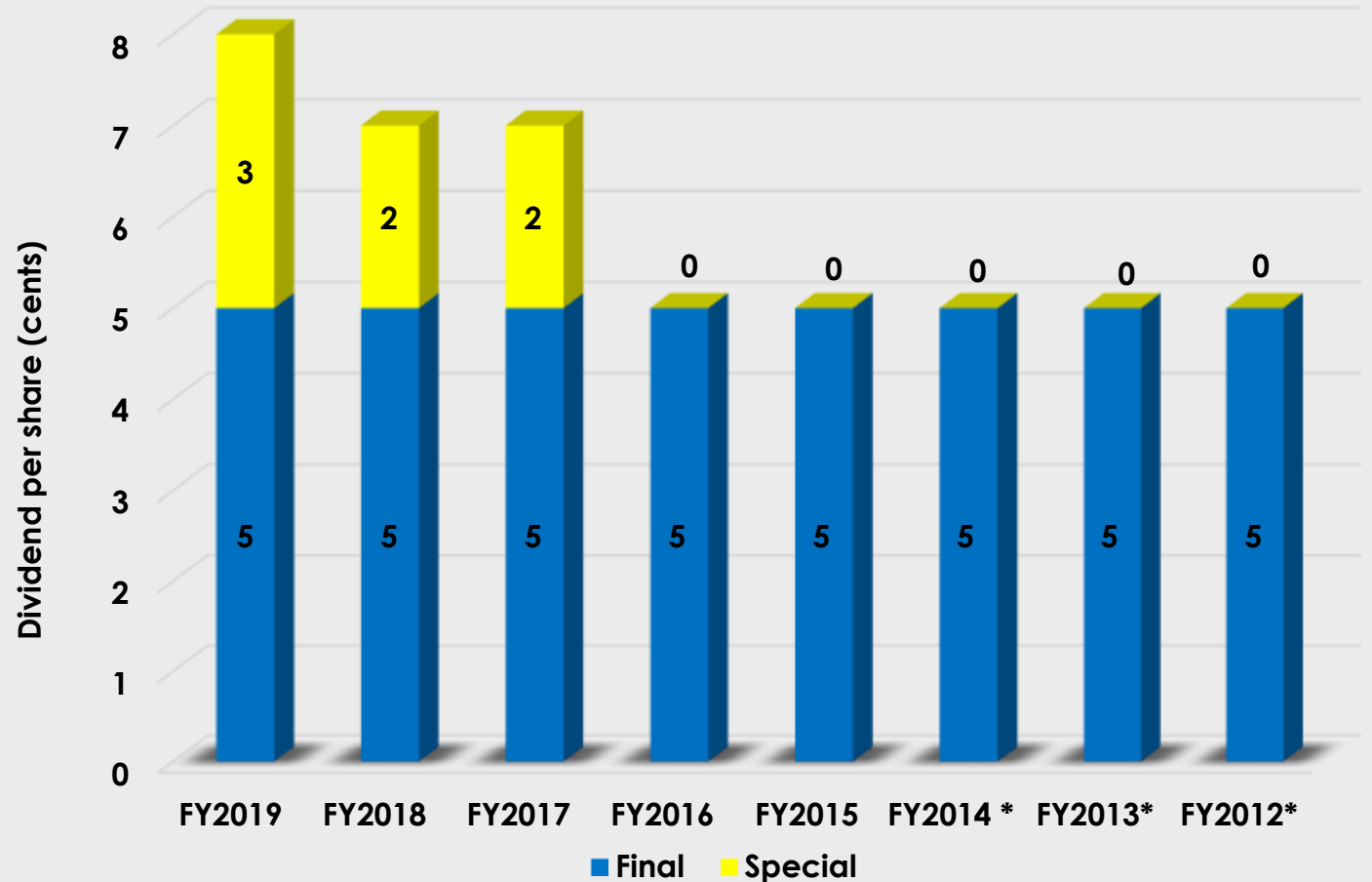


*\* Operating expenses exclude exchange loss*

# BALANCE SHEET HIGHLIGHTS

		31 March 2019	31 March 2018
<b>Cash</b>	Cash and cash equivalent	S\$ 35.15 million	S\$ 27.35 million
<b>Gearing</b>	Total borrowings	Nil	Nil
<b>Investment property</b>	Investment property leased to outside parties	S\$17.07 million	S\$17.26 million
	Self-occupied office unit	S\$ 1.86 million	S\$ 1.88 million
		<b>S\$ 18.93 million</b>	<b>S\$19.14 million</b>
	Fair value (determined by Colliers International)	S\$ 35 million	S\$ 33.7 million
<b>Trade receivables</b>	Trade receivable	S\$0.41 million	S\$ 0.81 million
	outstanding > 90 days / Total trade receivable	2.2%	1.2%
	Bad debt expense	Nil	Nil
<b>Inventory</b>	Inventory	S\$ 3.0 million	S\$ 1.6 million
	Inventory / sales	11%	9%
<b>Equity</b>	Shareholders' equity	S\$ 58.7 million	S\$ 54.8 million
	NAV per share	S\$ 1.68	S\$ 1.57
	Adjusted NAV per share ( property at fair value)	S\$ 2.14	S\$ 1.98

# DIVIDEND TRACK RECORD



\* Adjusted for the effect of 5:1 share consolidation

**THANK  
YOU**

# QUESTIONS & ANSWERS

