

## Media Release

# **RafflesMedicalGroup Forms Joint Venture to Build International Hospital in Shanghai**

13 May 2015, Singapore – **RafflesMedicalGroup** and Shanghai LuJiaZui Group (上海陆家嘴集团) have formed a joint venture to develop a 400-bed international general hospital in Shanghai's Pudong New Area. A signing ceremony was held today at the Shangri-La Hotel in Singapore to mark the beginning of the joint collaboration between **RafflesMedicalGroup** and Shanghai LuJiaZui Group to undertake the Shanghai New Bund International Hospital Project (上海前滩国际医院项目). The ceremony was witnessed by Shanghai Mayor Mr Yang Xiong and Singapore's Minister for Trade and Industry Mr Lim Hng Kiang.

The Shanghai New Bund International Hospital Project will provide high quality and comprehensive healthcare services to local, expatriate, regional and international patients. The new hospital will be designed to offer a full complement of specialist services, combined with state-of-the-art medical technology, to meet a wide variety of medical needs such as obstetrics and gynaecology, cardiology, oncology and orthopaedics.

The new hospital in Shanghai will draw on the established expertise and systems of **RafflesMedicalGroup** to plan and manage the operations of the hospital. Like its Singapore counterpart, the hospital will adopt the institutional group practice model. This model affords a structure of clinical governance and a staff of medical specialists working together as a team and sharing a common commitment to the highest quality of medical practice through service, teaching and research.

The Shanghai New Bund International Hospital Project will be located at the New Bund International Business District of the Pudong New Area in Shanghai (see map in Annex). The New Bund is an emerging business centre in Pudong that has been designated by the Shanghai municipal government as one of six priority development areas in Shanghai's 12<sup>th</sup> Five-Year Plan. The site is strategically located at the heart of the New Bund, between the two major airports of Shanghai, the

Shanghai Pudong International Airport and the Hongqiao International Airport, both of which together handle over 90 million passengers per annum. With its eyes set on being a world-class hospital, the new facility will bring about a confluence of medical specialties and activities to create a medical hub in the new central business zone of Pudong.

“China is an attractive market with a growing demand for comprehensive healthcare services of international standards. We are excited to be involved in the Shanghai New Bund International Hospital Project with a strong partner. We aim to bring the well-known Raffles’ brand of quality, peer-reviewed healthcare to the residents of Shanghai,” said Dr Loo Choon Yong, Executive Chairman of **RafflesMedicalGroup**.

\*\*\*\*\*

For media queries, please contact:

Magdalene Lee (Ms)

Senior Manager, Corporate Communications

Raffles Medical Group

Tel: 6311 1318 Mobile: 9673 7403

Email: [lee\\_magdalene@rafflesmedical.com](mailto:lee_magdalene@rafflesmedical.com)

**RafflesMedicalGroup (SGX: RafflesMG)** is a leading integrated private healthcare provider in Singapore and the region.

**RafflesMedical** clinics form one of the largest network of private family medicine centres in Singapore. The Group also operates a clinic network in Hong Kong and a medical centre in Shanghai.

**RafflesHospital**, the flagship of Raffles Medical Group, is a private tertiary hospital located in the heart of Singapore offering a wide range of specialist medical and diagnostic services for both inpatients and outpatients. Representing more than 30 disciplines, our team of specialists constitutes a group practice combining sub-specialty expertise and teamwork to ensure optimal, affordable and high quality care for our patients. The Group also has representative offices in Indonesia, Vietnam, Cambodia, Brunei, Bangladesh and the Russian Far East, as well as associates throughout the Asia-Pacific region.

**RafflesDental** is a team-based dental group in Singapore comprising of a specialist dental practice at Raffles Hospital and a network of general dental clinics.

**RafflesHealthinsurance** provides healthcare insurance to corporate and individual clients.

For more information, please refer to our website at [www.rafflesmedicalgroup.com](http://www.rafflesmedicalgroup.com).

# Shanghai

- Expo
- ★ Shanghai New Bund International Hospital Project
- 📍 2010 World Expo Site
- ✈️ Shanghai Pudong International Airport
- ✈️ Shanghai Hongqiao International Airport
- 📍 The Bund
- 📍 People's Square

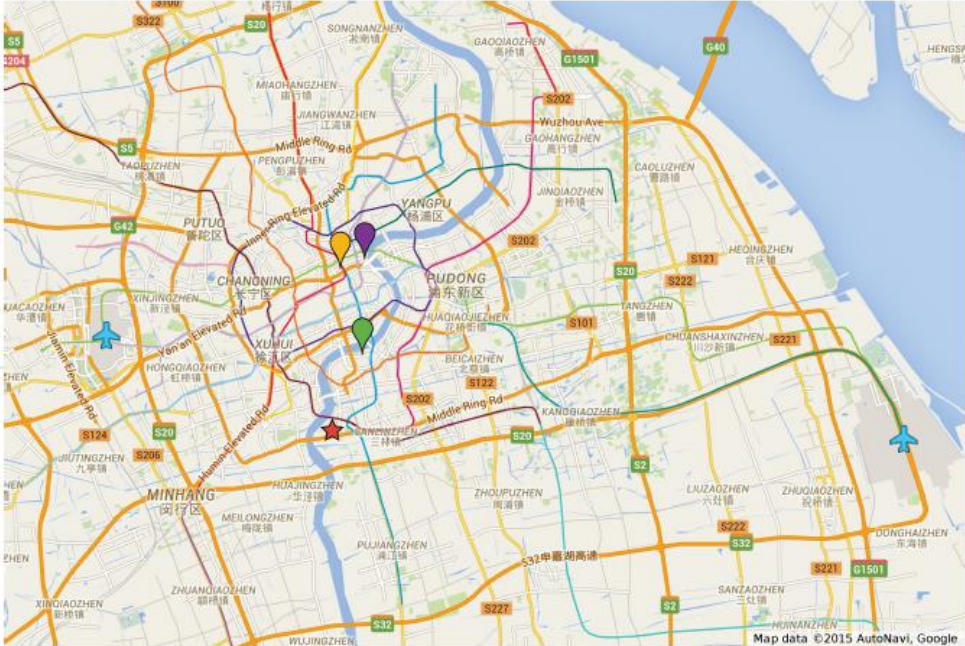


Image 1: The Shanghai New Bund International Hospital Project

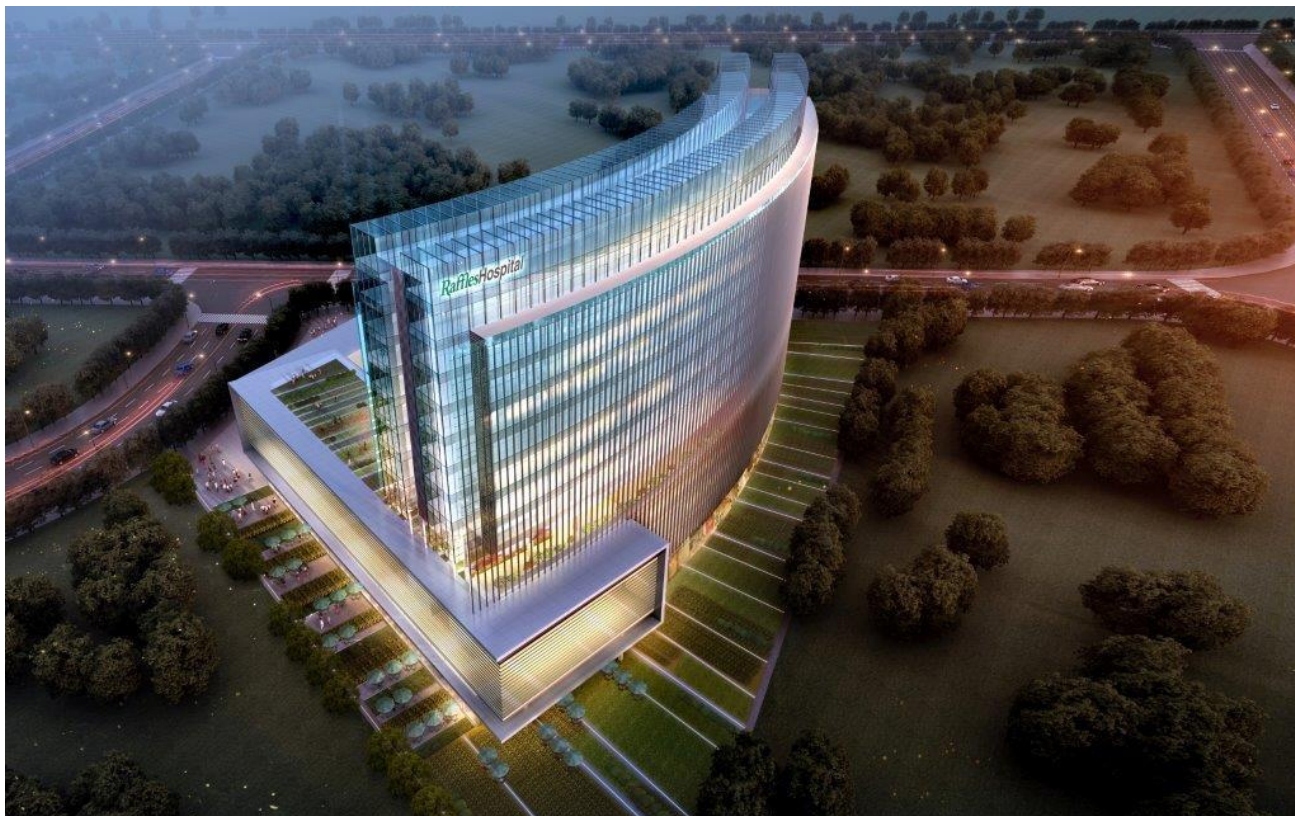




Image 2: Aerial view of the Shanghai New Bund International Hospital Project



Image 3: Night view of the Shanghai New Bund International Hospital Project



上海前滩国际医院项目  
Shanghai New Bund International Hospital Project

**RafflesMedicalGroup**  
Your Trusted Partner for Health